



28466

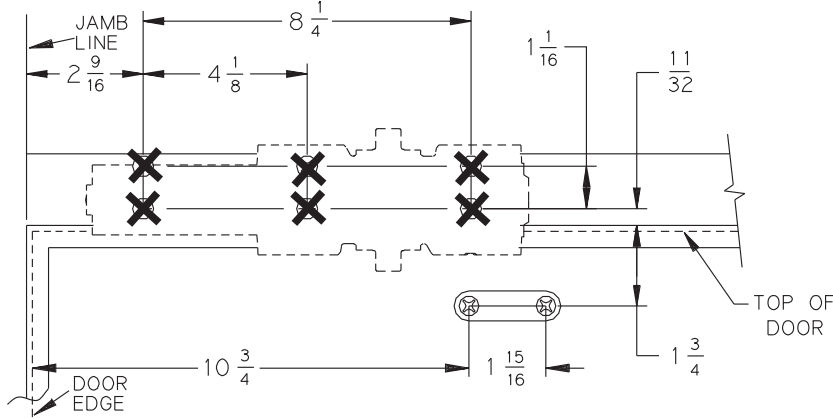
4040XP/4041DA



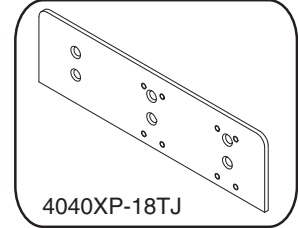
Drop Plate

Installation Instructions

4040XP & 4041DA PUSH SIDE (TOP JAMB) DROP PLATE PERMITS 120° MAXIMUM OPENING



PUSH SIDE MOUNT ON: 4040XP-18TJ DROP PLATE

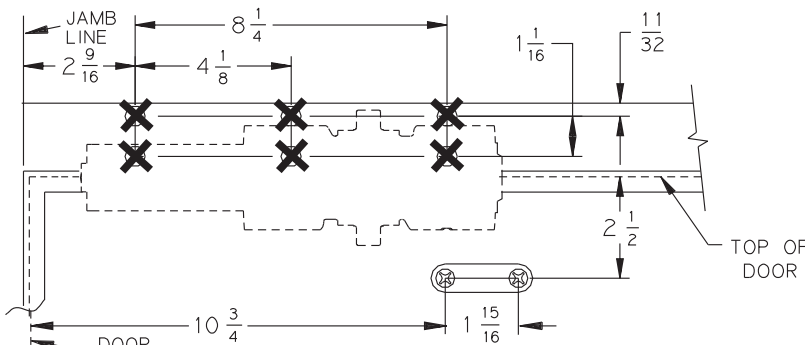


LEFT HAND DOOR SHOWN, RIGHT HAND OPPOSITE.

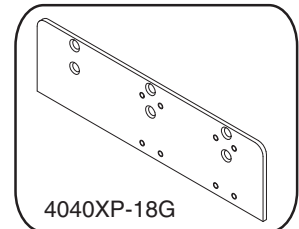
MAXIMUM REVEAL OF 2 9/16".
FOR REVEALS 2 5/8" - 4 13/16"
SPECIFY LONG ROD.
FOR REVEALS 8"
SPECIFY EXTRA LONG ROD.

Locate drop plate & shoe from centerline of pivot or swing clear hinge pin when used.

4040XP & 4041DA PUSH SIDE (TOP JAMB) DROP PLATE PERMITS 120° MAXIMUM OPENING FOR FLUSH CEILING



FLUSH CEILING PUSH SIDE MOUNT ON: 4040XP-18G DROP PLATE

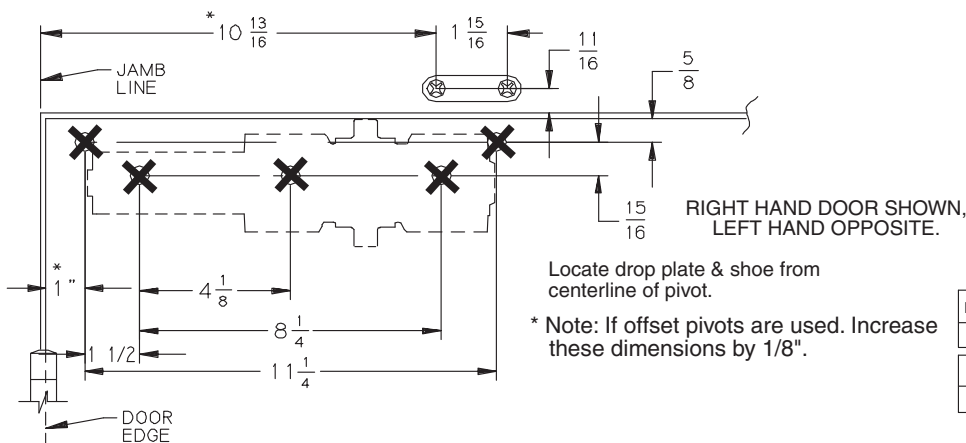


Locate drop plate & shoe from centerline of pivot or swing clear hinge pin when used.

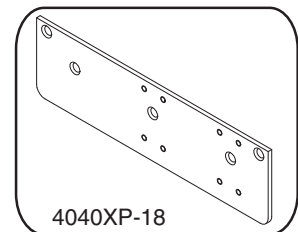
LEFT HAND DOOR SHOWN, RIGHT HAND OPPOSITE.

MAXIMUM REVEAL OF 2 9/16".
FOR REVEALS 2 5/8" - 4 13/16"
SPECIFY LONG ROD.
FOR REVEALS 8"
SPECIFY EXTRA LONG ROD.

4040XP & 4041DA PULL SIDE (DOOR JAMB) DROP PLATE PERMITS 120° MAXIMUM OPENING



PULL SIDE MOUNT ON: 4040XP-18 DROP PLATE



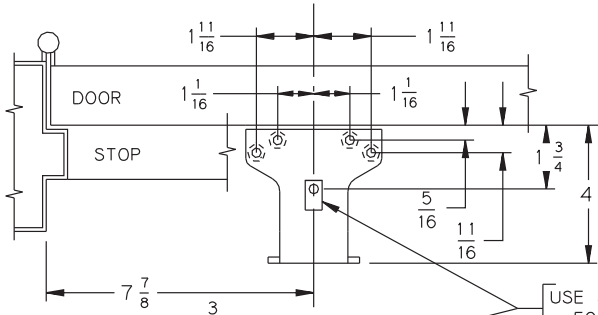
Locate drop plate & shoe from centerline of pivot.

* Note: If offset pivots are used. Increase these dimensions by 1/8".

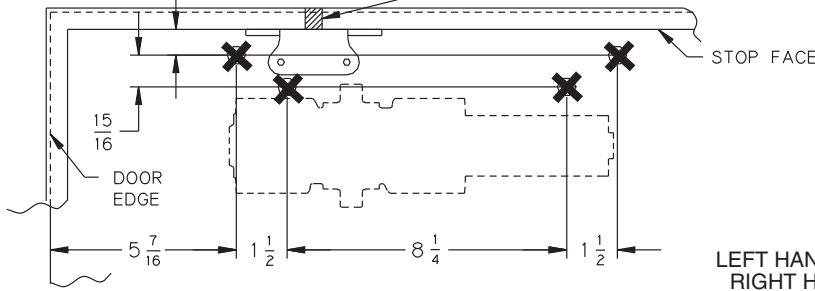
INCH	11/32	5/8	11/16	15/16	1	1 1/16	1 1/2	1 3/4
M.M.	9	16	17	24	25	27	38	44
INCH	1 15/16	2 1/2	2 9/16	4 1/8	8 1/4	10 3/4	10 13/16	11 1/4
M.M.	49	64	65	105	210	273	275	286

4040XP PA PUSH SIDE (DOOR MOUNT) DROP PLATE PERMITS 180° MAX. OPENING, BUTT SIZE 5x5 MAX.

**PUSH SIDE MOUNT ON:
4040XP-18PA DROP PLATE**



IMPORTANT
Before installing closer, turn backcheck selector valve (found on opposite side of closer from regulating screw side) all the way in (clockwise).

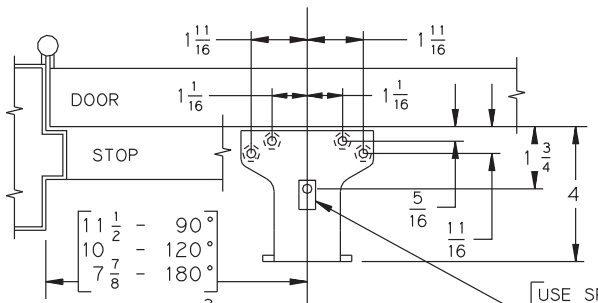


Locate drop plate & shoe from centerline of pivot or swing clear hinge pin when used.

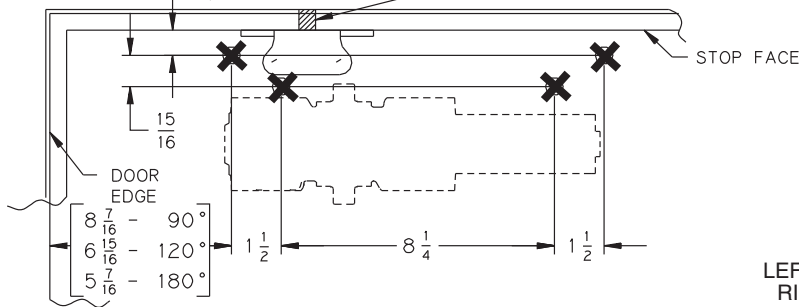
LEFT HAND DOOR SHOWN,
RIGHT HAND OPPOSITE.

4041PA DELAY PUSH SIDE (DOOR MOUNT) DROP PLATE

**PUSH SIDE MOUNT ON:
4040XP-18PA DROP PLATE**

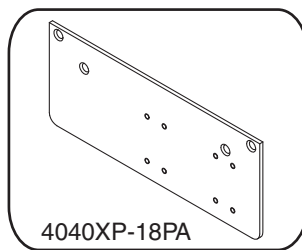


IMPORTANT
Before installing closer, turn backcheck selector valve (found on opposite side of closer from regulating screw side) all the way in (clockwise).



Locate drop plate & shoe from centerline of pivot or swing clear hinge pin when used.

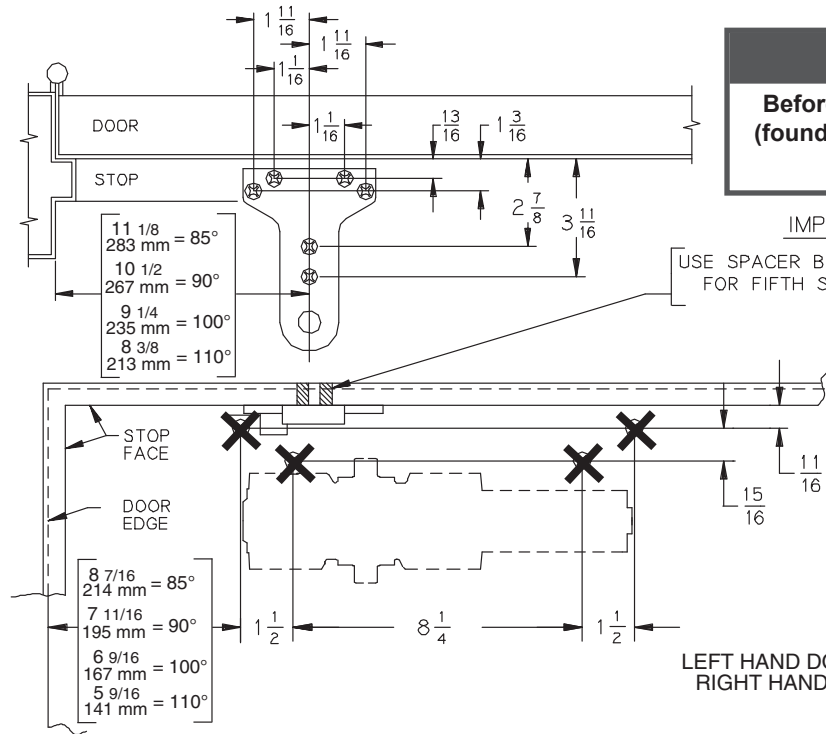
LEFT HAND DOOR SHOWN,
RIGHT HAND OPPOSITE.



INCH	5 1/16	11 1/16	3 3/4	15 1/16	1 1/16	1 1/2	1 11/16	1 3/4
M.M.	8	17	19	24	27	38	43	44
INCH	4	5 7/16	6 15/16	7 7/8	8 1/4	8 7/16	10	11 1/2
M.M.	102	138	176	200	210	214	254	292

4040XP CUSH PUSH SIDE (DOOR MOUNT) DROP PLATE PERMITS 110° MAX. OPENING, MIN. TOP RAIL 2 1/2".

PUSH SIDE MOUNT ON: 4040XP-18PA DROP PLATE



IMPORTANT
Before installing closer, turn backcheck selector valve (found on opposite side of closer from regulating screw side) all the way in (clockwise).

IMPORTANT

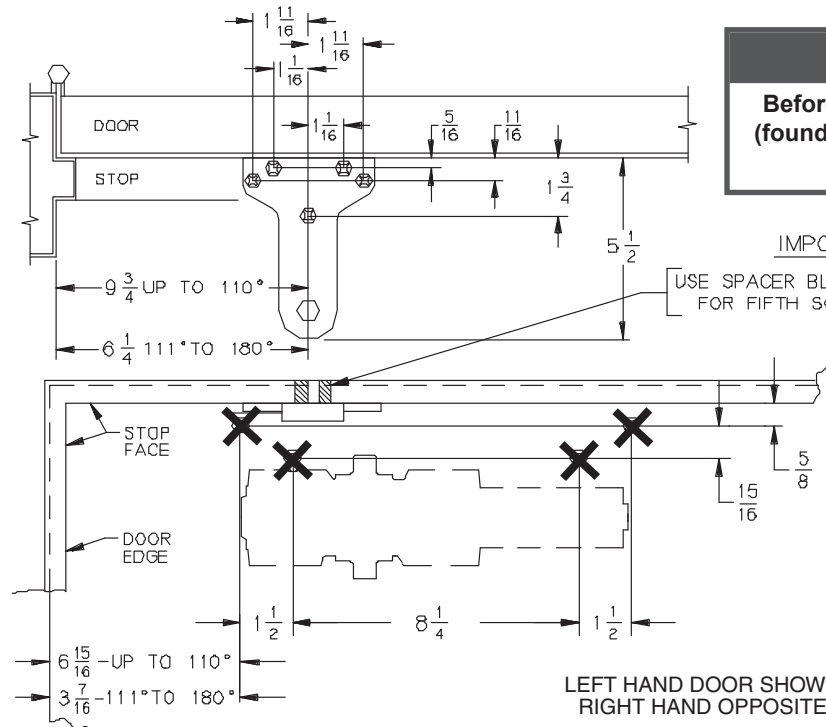
USE SPACER BLOCK PROVIDED FOR FIFTH SCREW. 1/2 OR 5/8

Locate drop plate & shoe from centerline of pivot or swing clear hinge pin when used.

LEFT HAND DOOR SHOWN, RIGHT HAND OPPOSITE.

4040XP EDA PUSH SIDE (DOOR MOUNT) DROP PLATE PERMITS 180° MAX. OPENING, MIN. TOP RAIL 2 1/2".

PUSH SIDE MOUNT ON: 4040XP-18PA DROP PLATE



IMPORTANT
Before installing closer, turn backcheck selector valve (found on opposite side of closer from regulating screw side) all the way in (clockwise).

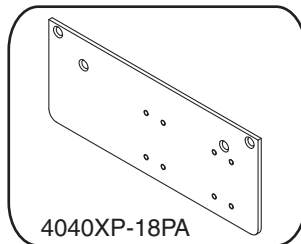
IMPORTANT

USE SPACER BLOCK PROVIDED FOR FIFTH SCREW. 1/2 OR 5/8

Locate drop plate & shoe from centerline of pivot or swing clear hinge pin when used.

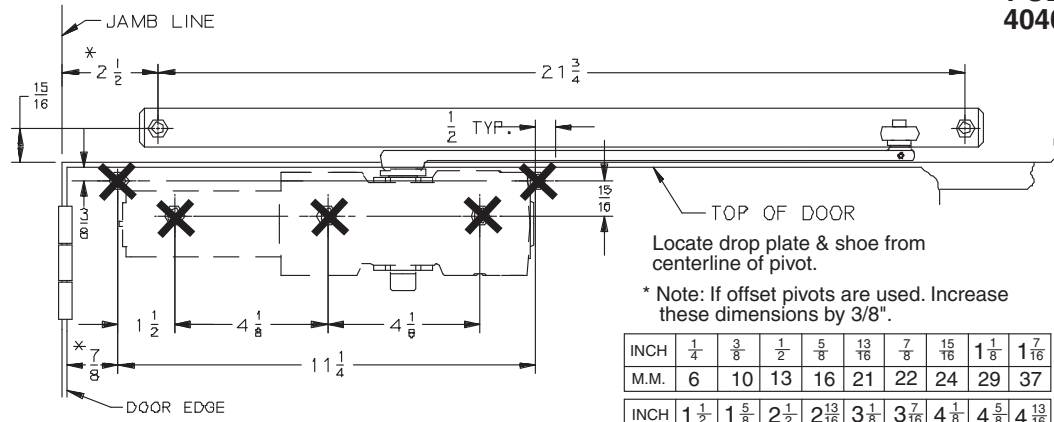
LEFT HAND DOOR SHOWN, RIGHT HAND OPPOSITE.

INCH	5/16	1/2	5/8	11/16	13/16	15/16	1 1/16	1 3/16	1 1/2
M.M.	8	13	16	17	21	24	27	30	38
INCH	1 11/16	1 3/4	2 7/8	3 7/16	3 11/16	5 1/2	5 7/8	6 1/4	6 11/16
M.M.	43	44	73	87	94	140	149	159	170
INCH	6 15/16	8 1/16	8 1/4	8 9/16	8 5/8	9 1/2	9 3/4	10 13/16	11 1/4
M.M.	176	205	210	217	219	241	248	275	286



4040XP-18PA

**4040XPT PULL SIDE (DOOR MOUNT) DROP PLATE
PERMITS 120° MAXIMUM OPENING, MIN. TOP RAIL 1 13/16"**



* Note: If offset pivots are used. Increase these dimensions by 3/8".

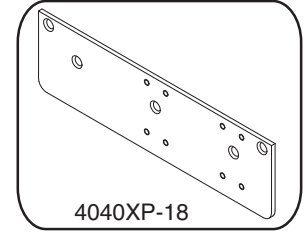
INCH	1/4	3/8	1/2	5/8	13/16	7/8	15/16	1 1/8	1 7/16
M.M.	6	10	13	16	21	22	24	29	37

INCH	1 1/2	1 5/8	2 1/2	2 13/16	3 1/8	3 7/16	4 1/8	4 5/8	4 13/16
M.M.	38	41	64	71	79	87	105	117	122

INCH	5 3/8	5 5/8	9 3/4	11 1/4	21 3/4
M.M.	137	143	248	286	553

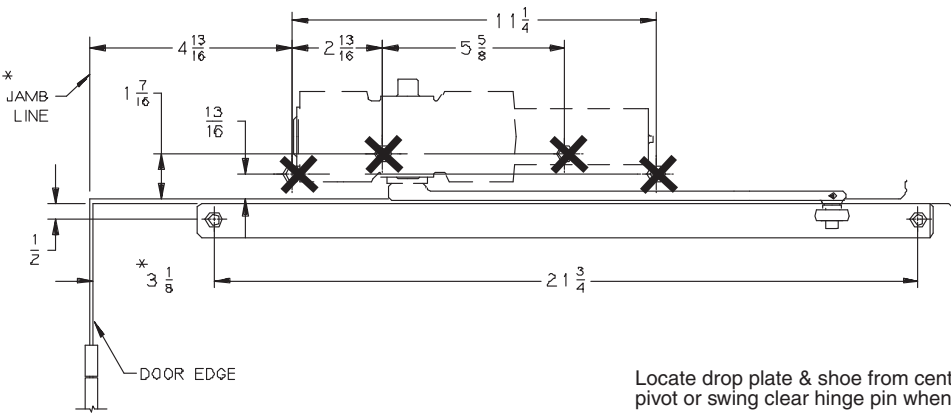
RIGHT HAND DOOR SHOWN, LEFT HAND OPPOSITE.

**PULL SIDE MOUNT ON:
4040XPT-18 DROP PLATE**



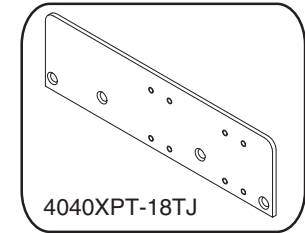
4040XP-18

**4040XPT PULL SIDE (TOP JAMB) DROP PLATE
PERMITS 180° MAXIMUM OPENING, MIN. FACE OF FRAME 1 3/4"**



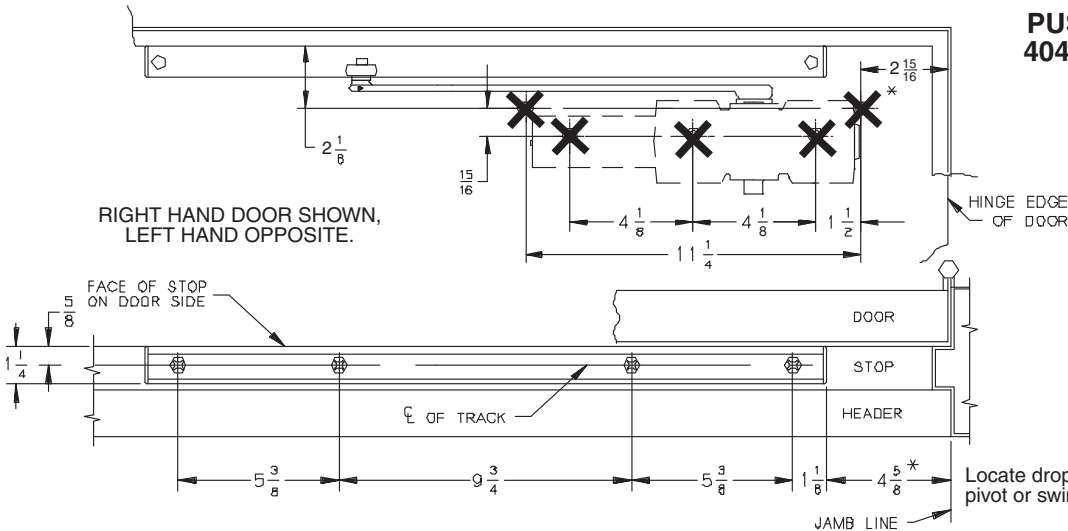
RIGHT HAND DOOR SHOWN, LEFT HAND OPPOSITE.

**PUSH SIDE MOUNT ON:
4040XPT-18TJ DROP PLATE**



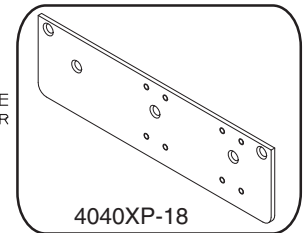
4040XPT-18TJ

**4040XPT PUSH SIDE (DOOR MOUNT) DROP PLATE
PERMITS 120° MAXIMUM OPENING, MIN. TOP RAIL 2 1/4"**



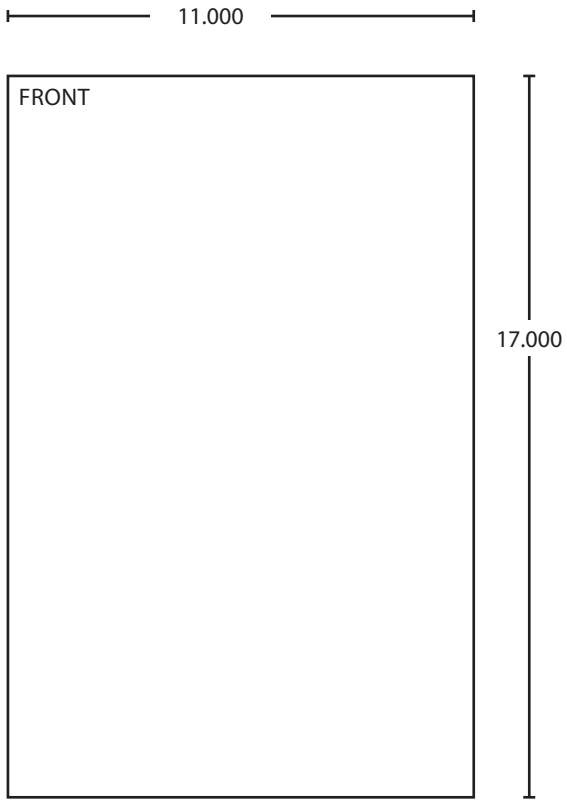
RIGHT HAND DOOR SHOWN,
LEFT HAND OPPOSITE.

**PUSH SIDE MOUNT ON:
4040XPT-18 DROP PLATE**

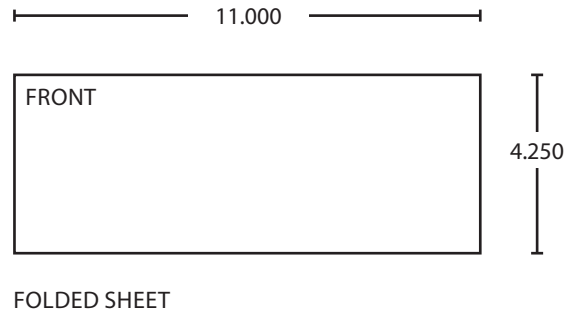


4040XP-18

Locate drop plate & shoe from centerline of pivot or swing clear hinge pin when used.



BEGINNING SHEET



Additional Notes:
1. None

Revision History						Revision Description: J > Revised artwork.					
J	K	L	M	N	P						
042801	073413										
Material White Paper						Edited By D. Toppins		Approved By B. Grover		EC Number 073413	Release Date 09-01-17
Notes 1. printed two sides 2. printed black 3. tolerance ± .13 4. printed in country may vary 5. drawings not to scale						Title 4040XP/4041DA Drop Plates Instruction Sheet					
						Creation Date 04-27-10		Number 28466			Revision K
						Created By N/A		Activity 3899 Hancock Expwy Security, CO 80911		© Allegion 2017	
						Software: InDesign CS6					