



28460

1460 Series

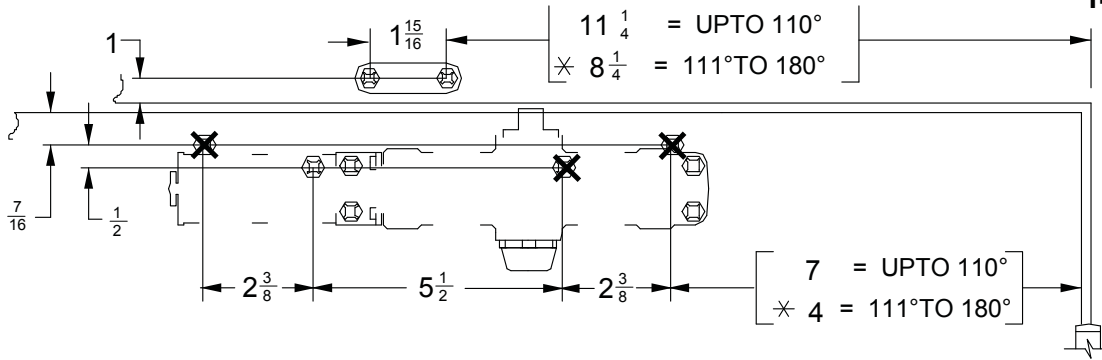


Drop Plate

Installation Instructions

1461 PULL SIDE (DOOR MOUNT) DROP PLATES

Pull side Arm Mounted On:
1461-18 Drop Plate
1461-18FC Drop Plate
1461-18DS1 Drop Plate



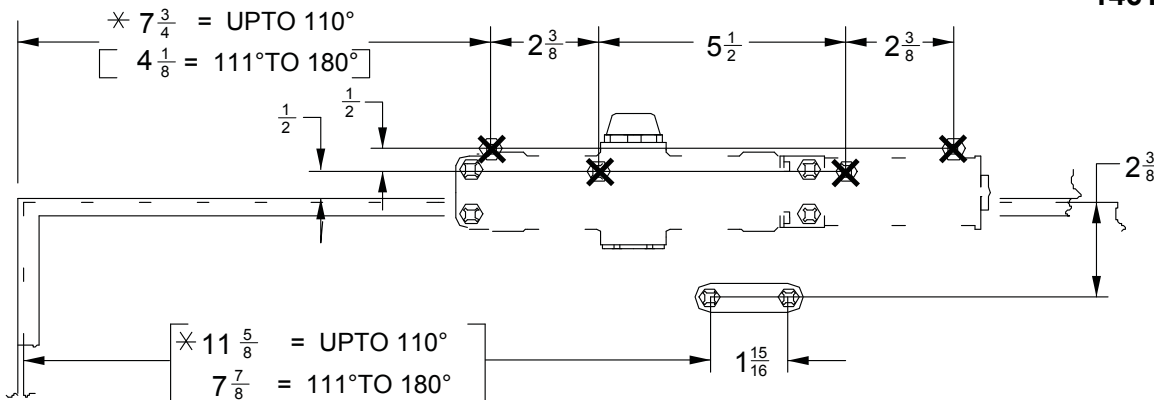
Left Hand Door Shown
Right Hand Door Opposite

NOTES-

1. MINIMUM TOP RAIL WIDTH IS $1\frac{1}{2}$ ".
- * 2. TRIM, FRAME, AND HINGE PERMITTING

1461 PUSH SIDE (TOP JAMB) DROP PLATES

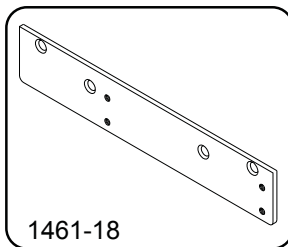
Push Side Arm Mounted On:
1461-18 Drop Plate



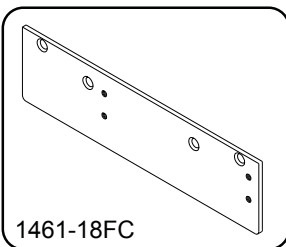
Left Hand Door Shown
Right Hand Door Opposite

NOTES-

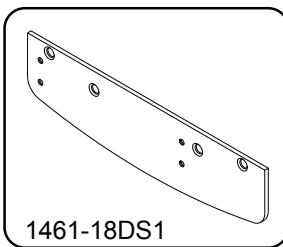
1. MINIMUM FRAME FACE OF $1\frac{1}{4}$ " REQUIRED.
- * 2. INCREASE THIS DIMENSION $1\frac{1}{2}$ " FOR DELAYED ACTION WHEN DOOR CAN ONLY OPEN 90°.



1461-18



1461-18FC



1461-18DS1

INCH	$\frac{7}{16}$	$\frac{1}{2}$	1	$1\frac{1}{4}$	$1\frac{1}{2}$	$1\frac{15}{16}$	$2\frac{3}{8}$	$2\frac{3}{4}$	4
M. M.	11	13	25	32	38	49	60	70	102
INCH	$4\frac{1}{8}$	$5\frac{1}{2}$	7	$7\frac{3}{4}$	$7\frac{7}{8}$	$8\frac{1}{4}$	$11\frac{1}{4}$	$11\frac{5}{8}$	$12\frac{3}{4}$
M. M.	105	140	178	197	200	210	286	295	324

General Notes:

1. On Top Jamb & Hinge Face Mounts. Locate Closer & Shoe From \bar{C} Of Pivot or Swing Clear Hinge Pin When Used.
2. On Top Jamb Mounting When Overhead Stop is Used, Shoe Must Be Lowered To Clear Holder.
3. For 180° Opening On Hinge Face Mounts, Max Buttsizes Is 5" X 5"
4. Reinforcing Per ANSI/SDI-100 Recommended For Hollow Metal Doors and Frames.
5. Closer Size Is $12\frac{3}{4}$ x $2\frac{3}{4}$ x $2\frac{3}{8}$

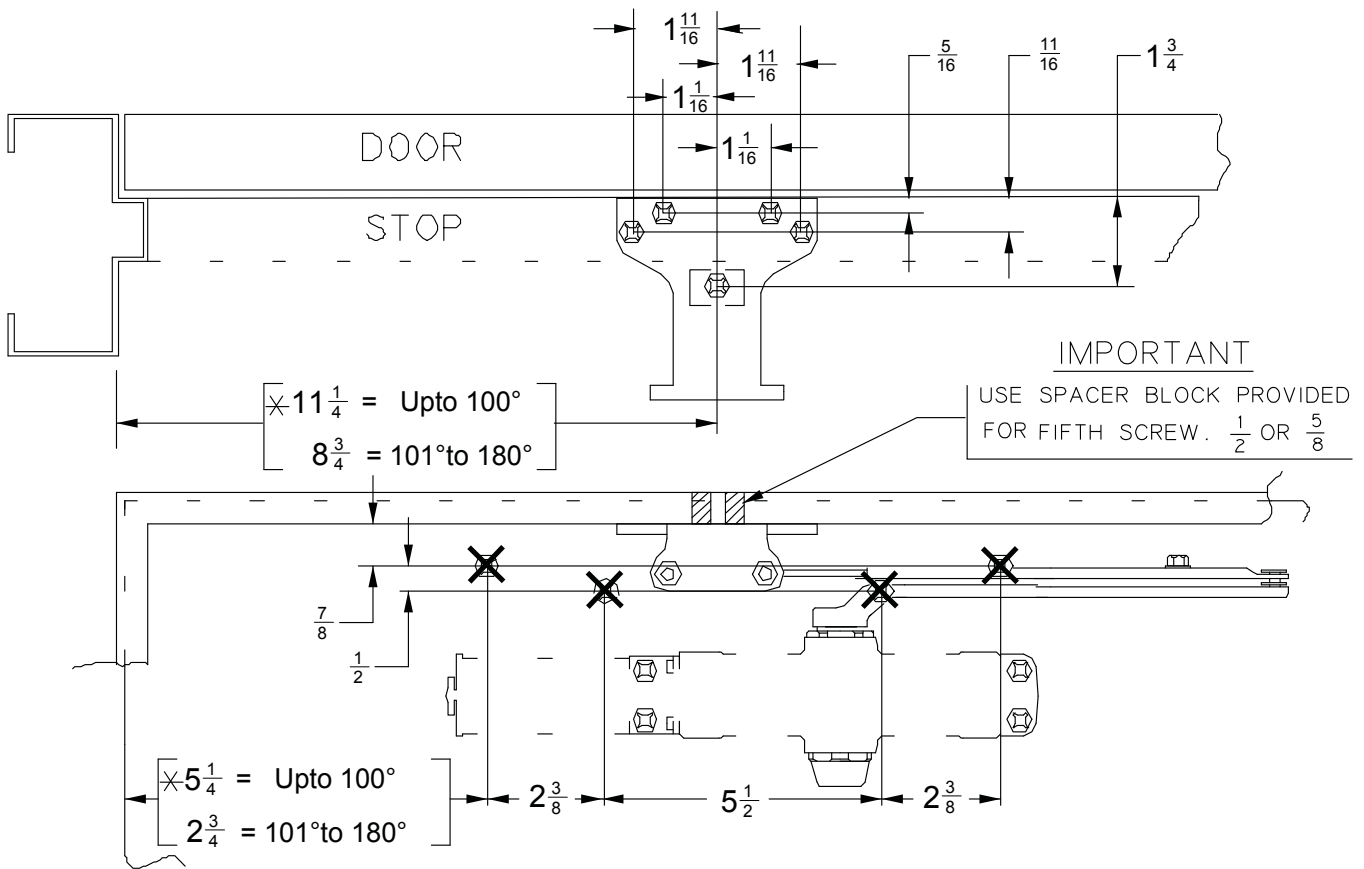
Customer Service

1-877-671-7011

www.allegion.com

P1461 Push Side (Door Mount) Drop Plates

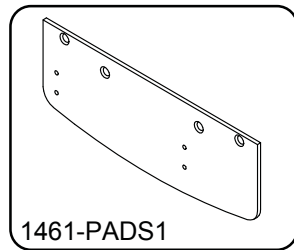
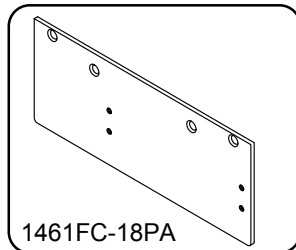
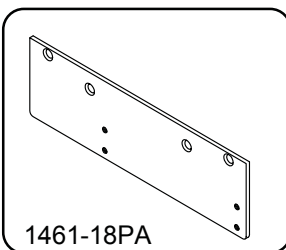
**Push Side Parellel Arm Mounted On:
1461-18PA Drop Plate
1461FC-18PA Drop Plate
1461-PADS1 Drop Plate**



Left Hand Door Shown
Right Hand Door Opposite

NOTES -

1. MINIMUM TOP RAIL WIDTH IS $2\frac{1}{4}$ ".
- * 2. INCREASE THIS DIMENSION $1\frac{1}{2}$ " FOR DELAYED ACTION WHEN DOOR CAN ONLY OPEN 90° .



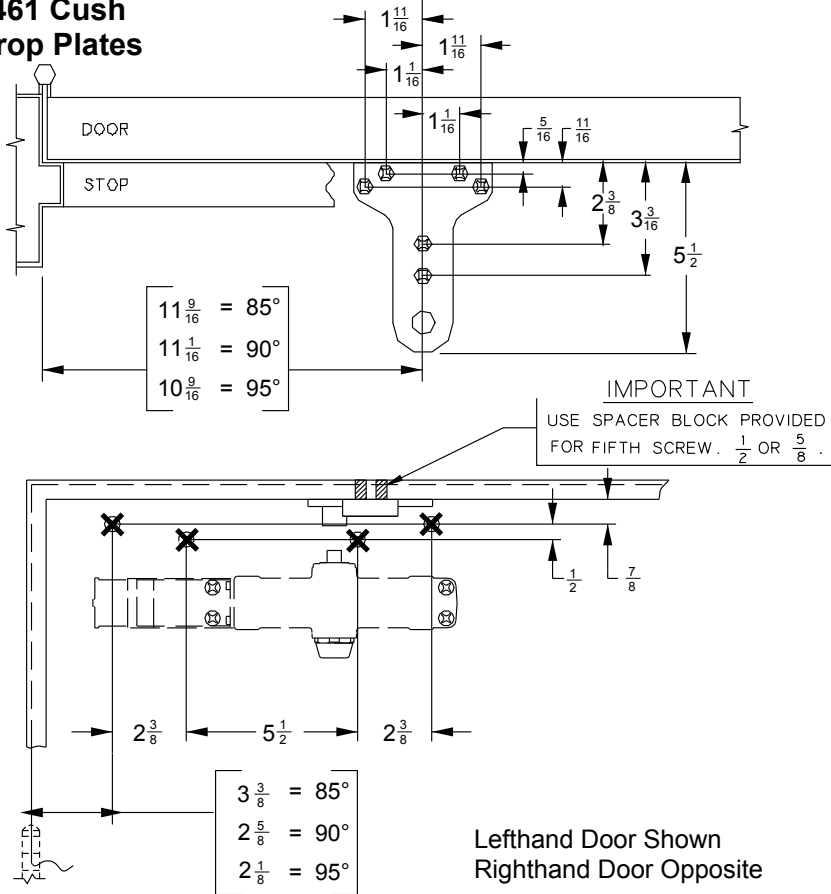
INCH	$\frac{5}{16}$	$\frac{1}{2}$	$\frac{11}{16}$	$\frac{7}{8}$	$1\frac{1}{16}$	$1\frac{11}{16}$	$1\frac{3}{4}$	$2\frac{3}{8}$	$2\frac{3}{4}$
M.M.	8	13	17	22	27	43	44	60	70

INCH	$3\frac{1}{2}$	$5\frac{1}{4}$	$5\frac{1}{2}$	$8\frac{3}{4}$	$11\frac{1}{2}$	$12\frac{3}{4}$
M.M.	89	133	140	222	292	324

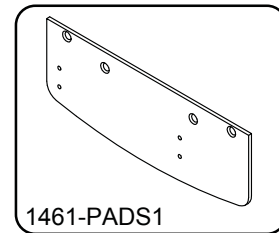
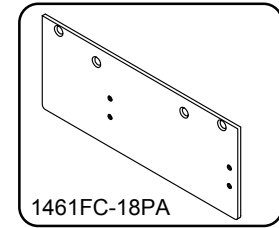
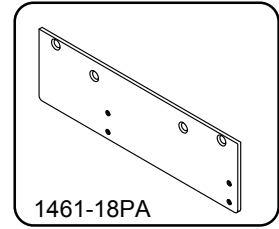
General Notes:

1. On Top Jamb & Hinge Face Mounts. Locate Closer & Shoe From \varnothing Of Pivot Or Swing Clear Hinge Pin When Used.
2. On Top Jamb Mounting When Overhead Stop Is Used, Shoe Must Be Lowered To Clear Holder.
3. For 180° Opening On P1460, Max Butt Size Is $5" \times 5"$, Max. Reveal For P1460 Mount Is $3\frac{1}{2}$.
4. Reinforcing Per ANSI/SDI-100 Recommended For Hollow Metal Doors And Frames.
5. Closer Size Is $12\frac{3}{4} \times 2\frac{3}{4} \times 2\frac{3}{8}$

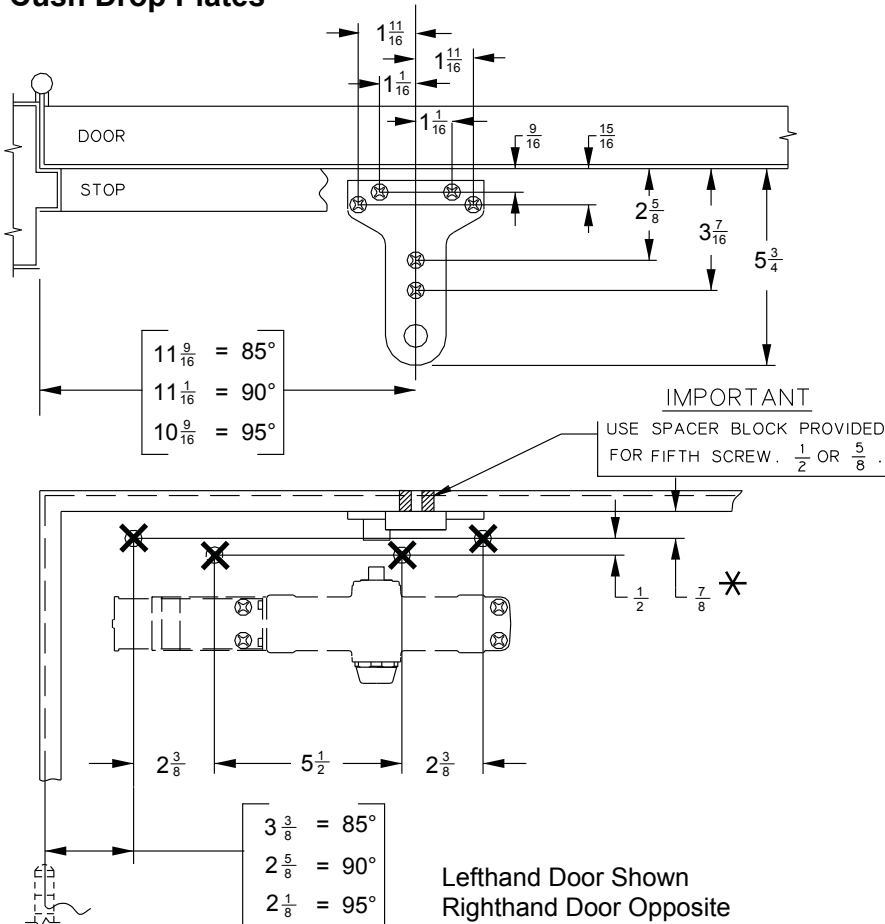
1461 Cush Drop Plates



Push Side, Parellelarm Mounted On: 1461-18PA Drop Plate 1461FC-18PA Drop Plate 1461-PADS1 Drop Plate



Push Side, Parallel Arm Mounted For Spring Cush Drop Plates



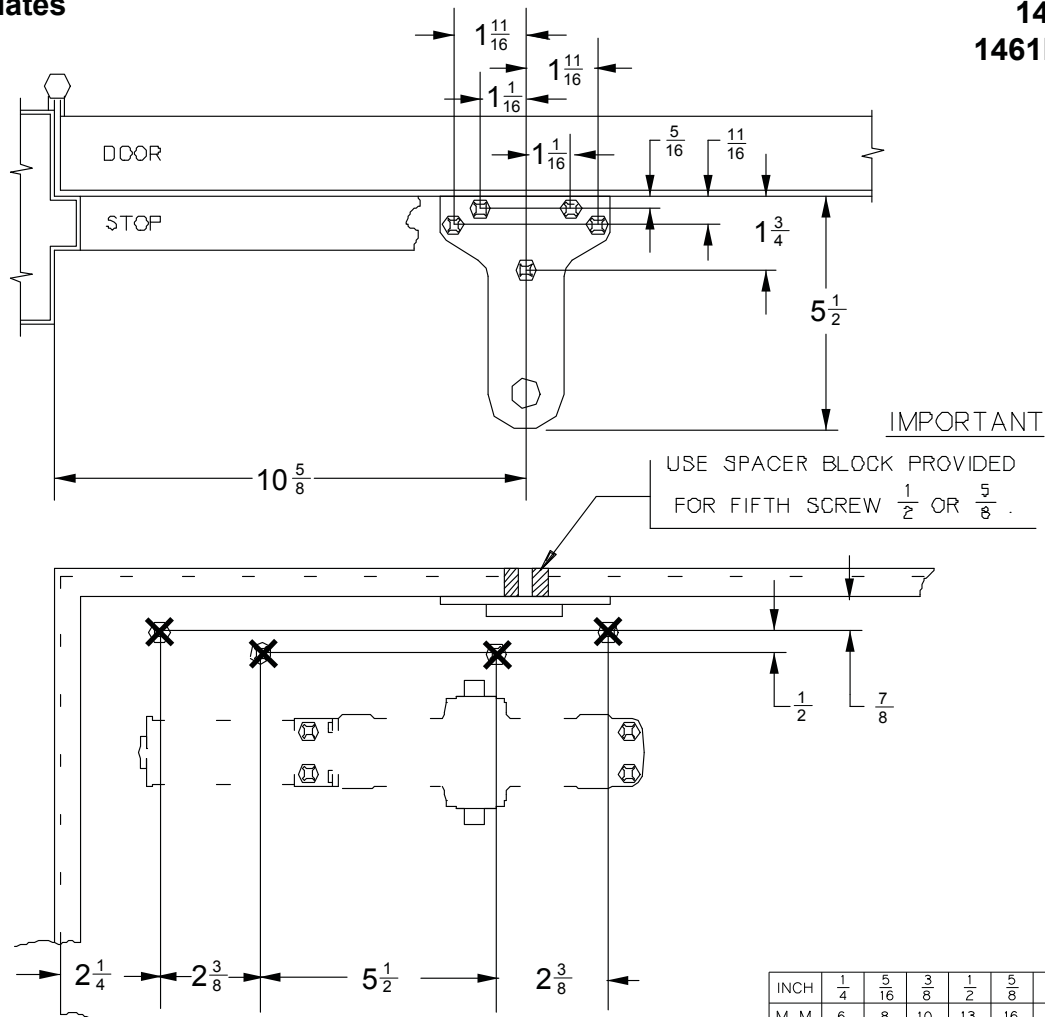
INCH	$\frac{1}{4}$	$\frac{5}{16}$	$\frac{3}{8}$	$\frac{1}{2}$	$\frac{5}{8}$	$\frac{11}{16}$	$\frac{7}{8}$	1	$1 \frac{1}{16}$	$1 \frac{1}{2}$	$1 \frac{5}{8}$
M. M.	6	8	10	13	16	18	22	25	27	38	41
INCH	$1 \frac{11}{16}$	2	$2 \frac{3}{8}$	$2 \frac{5}{8}$	$2 \frac{3}{4}$	$2 \frac{7}{8}$	$3 \frac{3}{16}$	$3 \frac{3}{8}$	$4 \frac{3}{4}$	$4 \frac{7}{8}$	$5 \frac{1}{2}$
M. M.	43	51	60	66	70	73	81	86	120	123	139
INCH	$5 \frac{7}{8}$	$6 \frac{5}{8}$	$7 \frac{1}{2}$	$10 \frac{1}{16}$	$11 \frac{1}{16}$	$11 \frac{9}{16}$	$12 \frac{1}{4}$				
M. M.	149	168	190	255	281	293	311				

General Notes:

1. If door is hung on pivots
Locate closer and shoe from ϕ of pivot point.
 2. Closer size $12 \frac{1}{4} \times 2 \frac{3}{4} \times 2 \frac{3}{8}$.
 3. Top rail less than $4 \frac{3}{4}$
Requires drop plate.
 4. All dimensions applicable
For hold open or dead stop.
 5. Delayed action optional.
 6. Reinforcing per. ANSI/SDI-100
Recommended for hollow
Metal door and frames.
 7. $\frac{5}{8}$ maximum allowable side
Stop.
 8. Using fasters provided
Mount drop plate with
(4) $\frac{1}{4}$ - 14 x $1 \frac{3}{8}$ S.R.T.
Mount closer to drop plates
(4) $\frac{1}{4}$ - 20 x $\frac{1}{2}$ P.H.M.S.
- * Increase this dimension to $\frac{15}{16}$ for spring cush FC

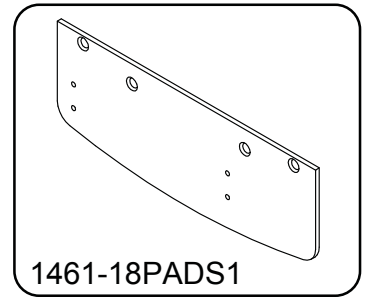
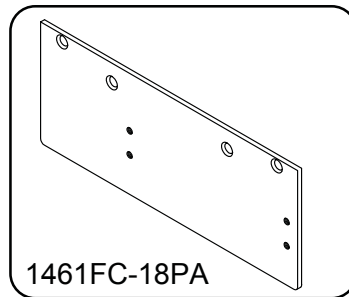
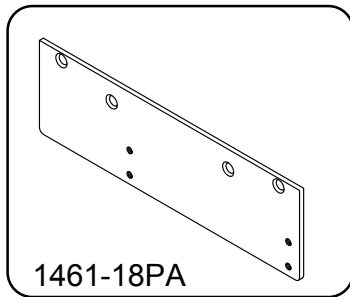
**1461 EDA
Drop Plates**

**Push Side, Parellel Arm Mounted On:
1461-18PA Drop Plate
1461FC-18PA Drop Plate
1461-PADS1**



Left Hand Door Shown
Right Hand Door Opposite

INCH	1/4	5/16	3/8	1/2	5/8	11/16	7/8	1	1 1/16	1 1/2	1 5/8
M.M.	6	8	10	13	16	18	22	25	27	38	41
INCH	1 11/16	2	2 3/8	2 5/8	2 3/4	2 7/8	3 3/16	3 3/8	4 3/4	4 7/8	5 1/2
M.M.	43	51	60	66	70	73	81	86	120	123	139
INCH	5 7/8	6 5/8	7 1/2	10 1/16	11 1/16	11 9/16	12 1/4				
M.M.	149	168	190	255	281	293	311				



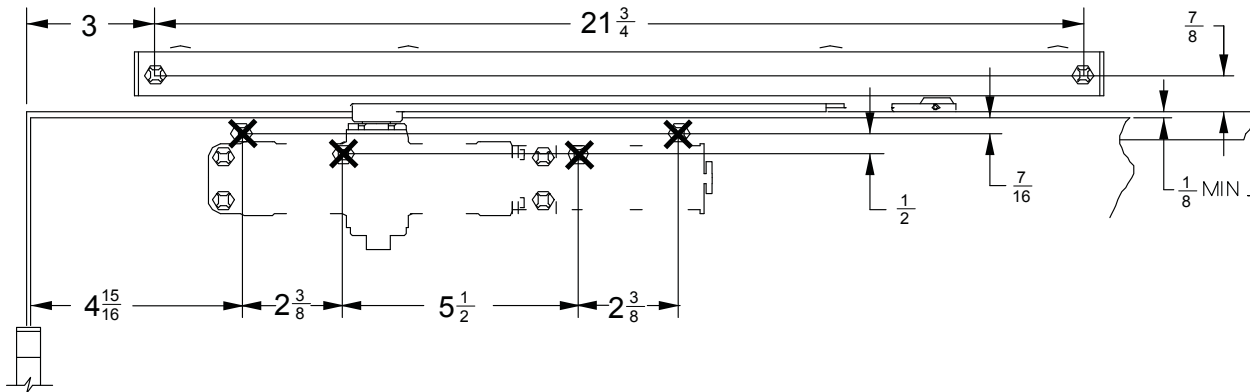
General Notes:

1. If door is hung on pivots locate closer and shoe from c of pivot point. (consult factory if using swing clear hinges.)
2. Closer size 12 1/4 x 2 3/4 x 2 3/8.
3. Top rail less than 4 3/4 requires drop plate.
4. All dimensions applicable for hold open.
5. Delayed action optional.
6. Reinforcing per ANSI/SDI-100 recommended for hollow metal door and frames.
7. 5/8 maximum allowable side stop.
8. Using fasters provided mount drop plate with (4) 1/4 - 14 x 1 3/8 S.R.T. mount closer to drop plates with (4) 1/4 - 20 x 1/2 p.H.M.S. Max. Butt hinge size 5 x 5.

1460T/1461T Pull Side (Door Mount) Drop Plates

Pull Side Arm Mounted On:

1461-18 Drop Plate
1461-18FC Drop Plate
1461-18DS1 Drop Plate

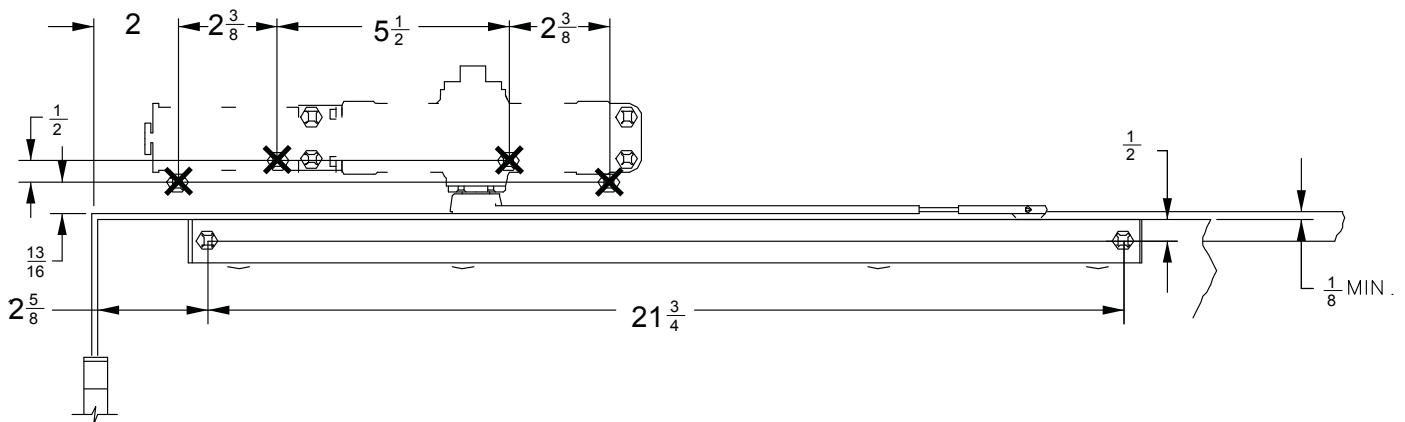


Right Hand Door Shown
Left Hand Door Opposite

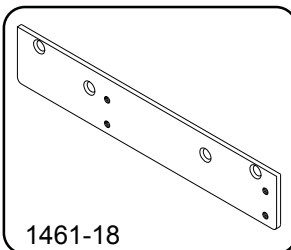
1461 Pull Side (Top Jamb) Drop Plates

Push Side Arm Mounted On:

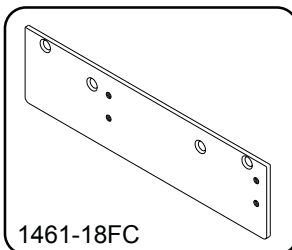
1461-18 Drop Plate
1461-18FC Drop Plate



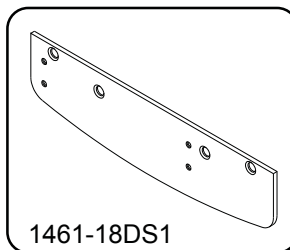
Right Hand Door Shown
Left Hand Door Opposite



1461-18



1461-18FC



1461-18DS1

INCH	$\frac{1}{8}$	$\frac{7}{16}$	$\frac{1}{2}$	$\frac{13}{16}$	$\frac{7}{8}$	1	$2\frac{3}{8}$	$2\frac{5}{8}$	$2\frac{3}{4}$
M.M.	3	11	13	21	22	51	60	67	70

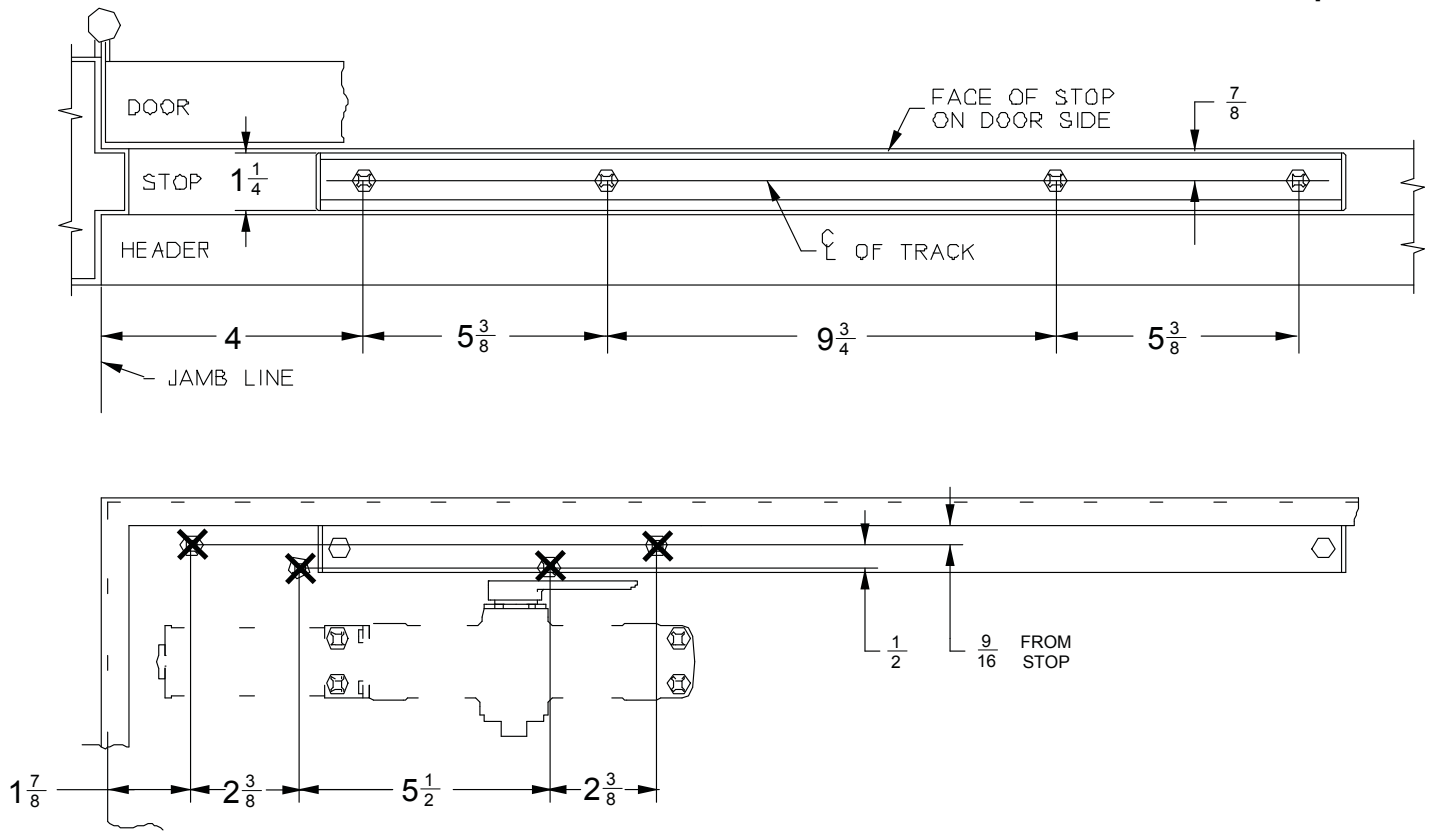
INCH	3	$4\frac{15}{16}$	$5\frac{1}{2}$	$12\frac{3}{4}$	$21\frac{3}{4}$
M.M.	76	125	140	324	552

General Notes:

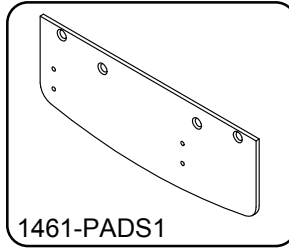
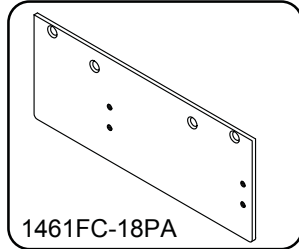
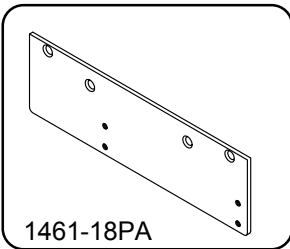
1. Locate closer & track from C of pivot or swing clear hinge pin when used.
2. If butt, frame and wall conditions permit. Pull side mountings allow 180° of opening.
3. Optional hold-open available. Adjustable from 85° - 100°.
4. Reinforcing per ANSI/SDI-100 recommended for hollow metal doors and frames.
5. Closer size is $12\frac{3}{4} \times 2\frac{3}{4} \times 2\frac{3}{8}$
6. Delay action optional.

**1460T/1461T Push Side (Door Mount)
Drop Plates**

**Push Side Parellel Arm Mounted On:
1461-18PA Drop Plate
1461FC-18PA Drop Plate
1461-PADS1 Drop Plate**



Left Hand Door Shown
Right Hand Door Opposite

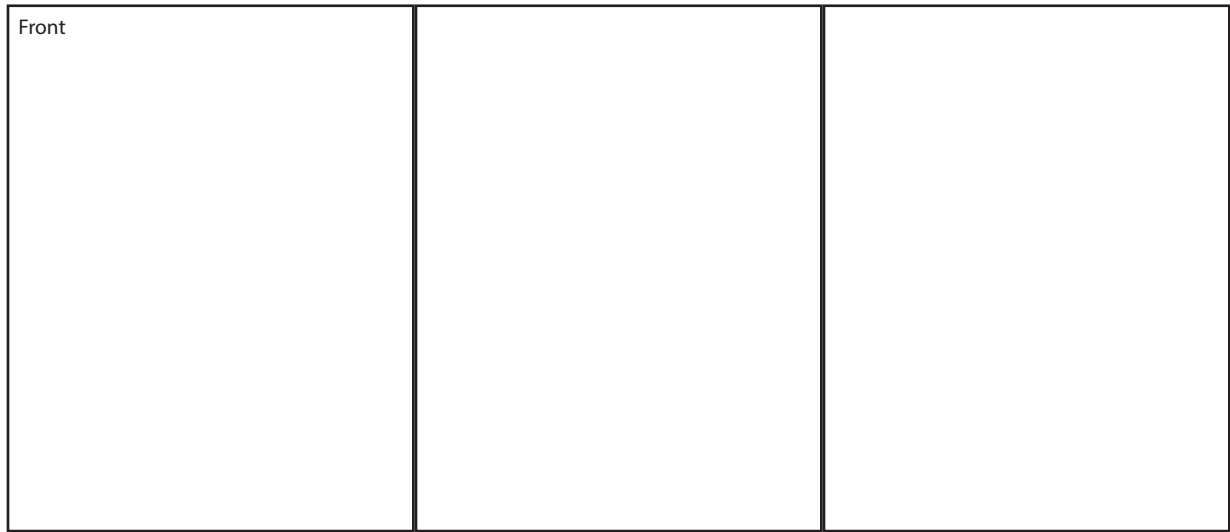


INCH	$\frac{1}{2}$	$\frac{9}{16}$	$\frac{7}{8}$	$1\frac{1}{4}$	$1\frac{7}{8}$	$2\frac{3}{8}$	$2\frac{3}{4}$
M.M.	13	14	22	32	44	60	70
INCH	4	$5\frac{3}{8}$	$5\frac{1}{2}$	$9\frac{3}{4}$	$12\frac{3}{4}$		
M.M.	102	137	140	248	324		

General notes:

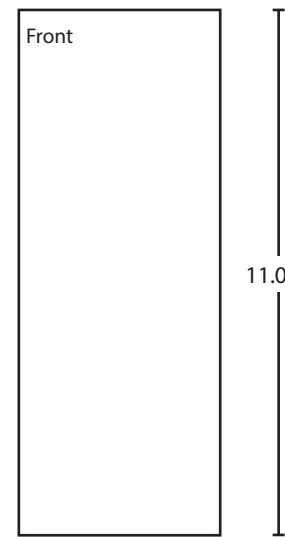
1. Locate closer & track from C of pivot or swing clear hinge pin when used.
2. If butt, frame and wall conditions permit. Pull side mountings allow 180° of opening.
3. Optional hold-open available. Adjustable from 85° - 100°.
4. Reinforcing per ANSI/SDI-100 recommended for hollow metal doors and frames.
5. Closer size is $12\frac{3}{4} \times 2\frac{3}{4} \times 2\frac{3}{8}$
6. Delay action optional.

25.500



BEGINNING SHEET

4.25



FOLDED SHEET

Additional Notes:
1. None

Revision History						Revision Description: A > Revised Artwork			
C	D	E	F	G	H				
042801									
Material White Paper						Edited By D. Myers	Approved By M. Sasso	EC Number 042801	Release Date 01-01-14
Notes 1. printed two sides 2. printed black 3. tolerance ± .13 4. printed in country may vary 5. drawings not to scale						Title 1461 Drop Plate Installation Instructions			
						Creation Date 09-21-11	Number 28460		Revision C
						Created By N/A	Activity 3899 Hancock Expwy Security, CO 80911		
						Software: InDesign CS6		© Allegion 2014	