



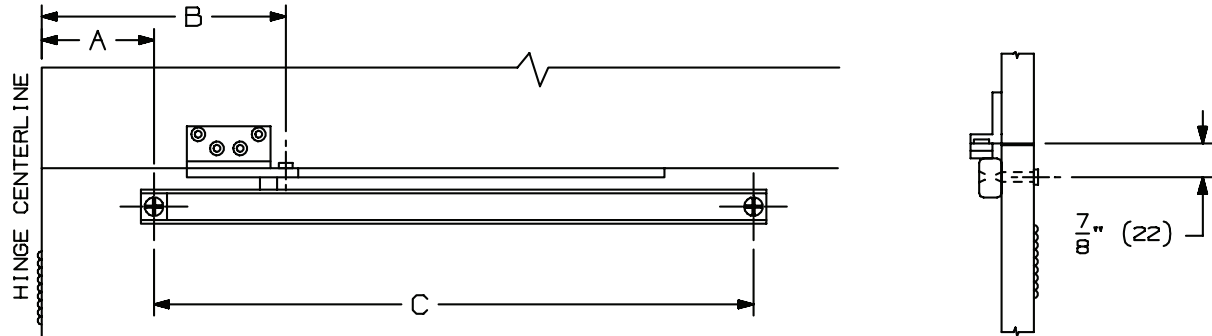
INST.450J

Surface Overhead Holder Angle Bracket (Push Side)

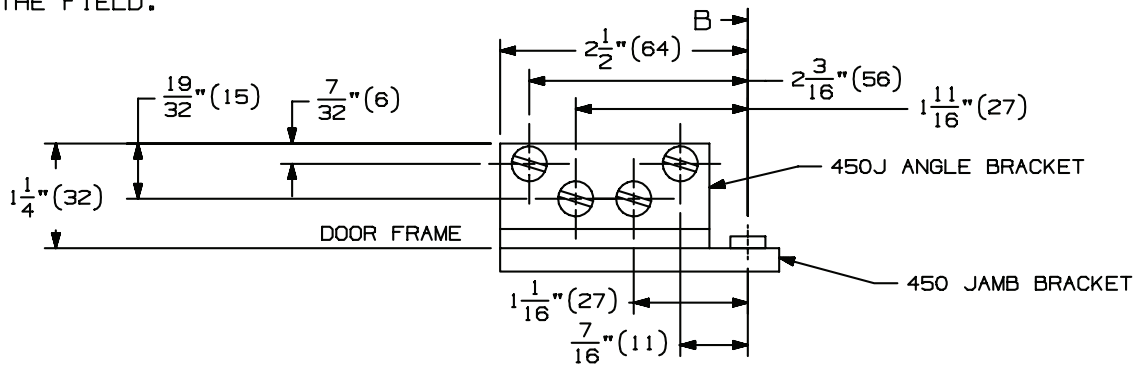
Installation Instructions

OVERHEAD HOLDERS OR STOPS MUST BE INSTALLED BEFORE CLOSERS.

- 1. A. FOLLOW STEP 1 FROM THE 450 SERIES SURFACE OVERHEAD HOLDER INSTALLATION TEMPLATE INST.450.



- 2. A. LOCATE "B" DIMENSION ON THE FACE OF THE FRAME OR ON THE FLUSH TRANSOM PANEL. NOTE THAT THE "B" DIMENSION IS MEASURED FROM THE CENTERLINE OF THE HINGE AS SHOWN.
- B. FOR METAL FRAMES, USE A #21 DRILL AND 10-32 TAP IN 4 PLACES. FOR WOOD FRAMES, DRILL 1/8" PILOT HOLES IN 4 PLACES. MOUNTING HOLES SHOULD BE PREPARED IN THE FIELD.



- 3. A. LOCATE "A" & "C" DIMENSIONS ON THE DOOR. NOTE THAT THE "A" DIMENSION IS MEASURED FROM THE CENTERLINE OF HINGE AS SHOWN.
- B. DRILL THE 1/4" (6) DIAMETER THROUGH HOLES DOWN 7/8" (33) FROM THE FRAME OR FLUSH TRANSOM PANEL IN TWO PLACES. ON THE PULL SIDE OF DOOR, DRILL 13/32" (10) DIAMETER HOLE, 1 5/8" (41) DEEP FOR SEX BOLT. MOUNTING HOLES SHOULD BE PREPARED IN THE FIELD.
- 4. A. INSTALL ANGLE BRACKET ONTO STANDARD JAMB BRACKET WITH 10-32 X 1/2" FPHMS PROVIDED WITH THE ANGLE BRACKET.
- B. INSTALL THE CHANNEL ON THE DOOR WITH THE SHOCK SPRING TOWARDS THE HINGE EDGE OF DOOR.
- C. INSTALL THE ANGLE BRACKET TO THE FACE OF THE FRAME OR THE FLUSH TRANSOM PANEL.

SCREW DETAILS

	QTY	WOOD	METAL
ANGLE	4	10-32 X 1/2" FPHMS	10-32 X 1/2" FPHMS
JAMB	4	#10 X 1 1/2" FPHSMS	10-32 X 1/2" FPHMS
DOOR	2	10-24 X 1 1/2" PPHMS	10-24 X 1 1/2" PPHMS
DOOR	2	10-24 X 1 9/16" SEX BOLT	10-24 X 1 9/16" SEX BOLT

NOTE: DIMENSIONS IN () ARE IN MILLIMETERS



INST.450J