



931218-00

6211WF/6211WFDS

VON DUPRIN®

Electric Strike, Single Door Wood Frame Mortise or Cylindrical Application

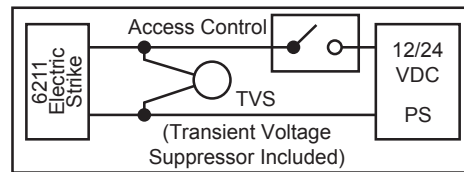
Installation Instructions

**Notes:** Deadbolt will not function with this strike.  
Check with factory for retrofit applications.

1. For lock or device preparation, see their directions.
2. Prepare frame for strike (see other side).
3. Wire strike (Figure 1). (Switches on 6211WFDS only.)
4. Test strike: Apply solenoid power. Fail secure (FSE) lip unlocks. Fail safe (FS) lip locks. Figure 1 shows status of switches.

5. Install strike with two #12-24 screws. Make sure clearance between latch bolt and strike lip is 1/32" (Figure 2). If not, uninstall strike, adjust (Figure 3), and reinstall.
6. If latch bolt does not extend far enough to actuate tripper, install extension (Figure 4). (Tripper on 6211WFDS only.)
7. Test door: With strike unlocked, door opens with latch bolt extended. When door closes, latch bolt rides over strike lip.

**TVS Installation Recommended**



**SOLENOID POWER REQUIREMENTS**

Yellow solenoid wires: 12 VDC, 0.57 A  
Black solenoid wires: 24 VDC, 0.29 A  
(also shown on strike label)

Wiring for DC supply

**NOTE**  
DC input is nonpolarized

12 VDC or 24 VDC

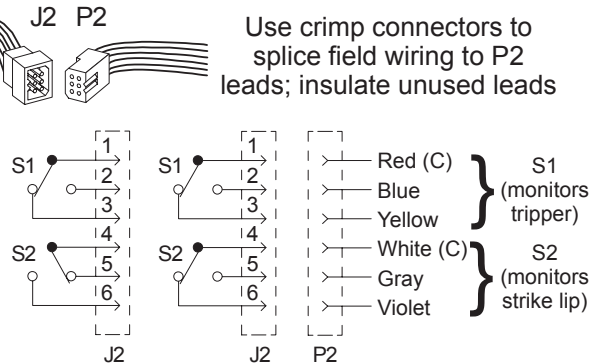
Wiring for AC supply

12 VAC → SO-12 → 12 VDC  
or  
24 VAC → SO-24 → 24 VDC

Use crimp connectors to splice field wiring to P1 leads

P1 J1A SO-12 or SO-24 P1A

**Figure 1**

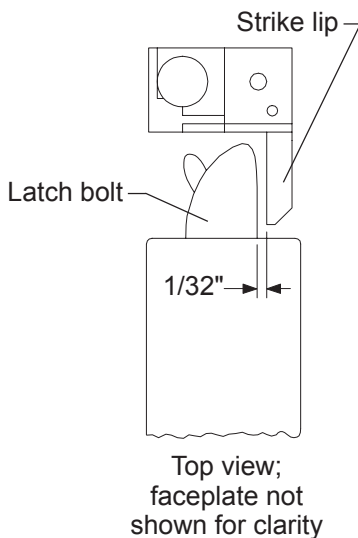


Fail safe (FS) Fail secure (FSE)

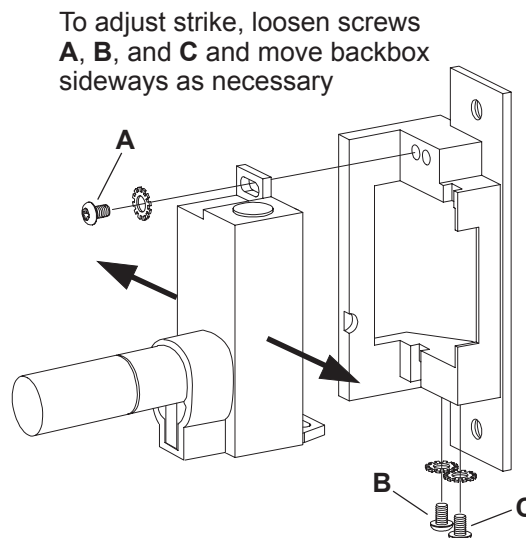
Switches shown with tripper depressed, strike lip closed and locked (switches and tripper on 6211WFDS only)

**SWITCH RATINGS**

Standard: 5 A, 30 VDC  
Gold: 0.25 A, 30 VDC

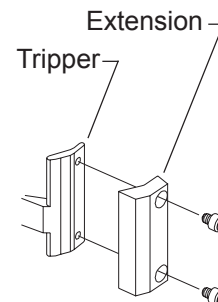


**Figure 2**

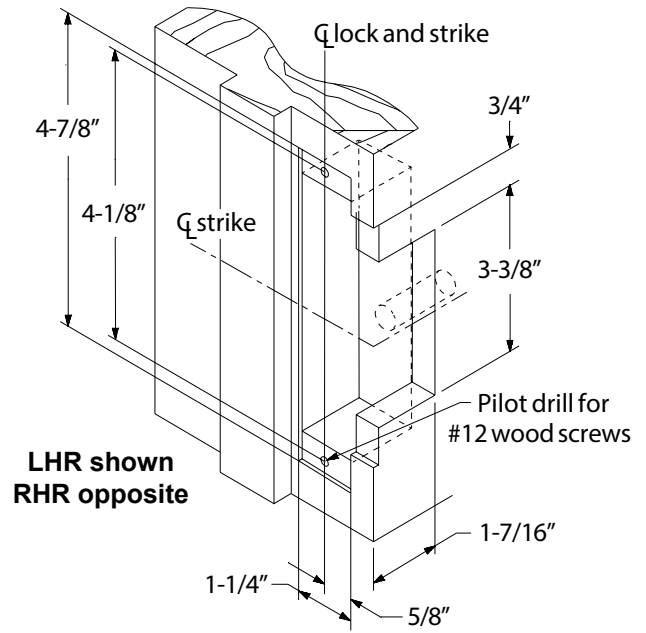


**Figure 3**

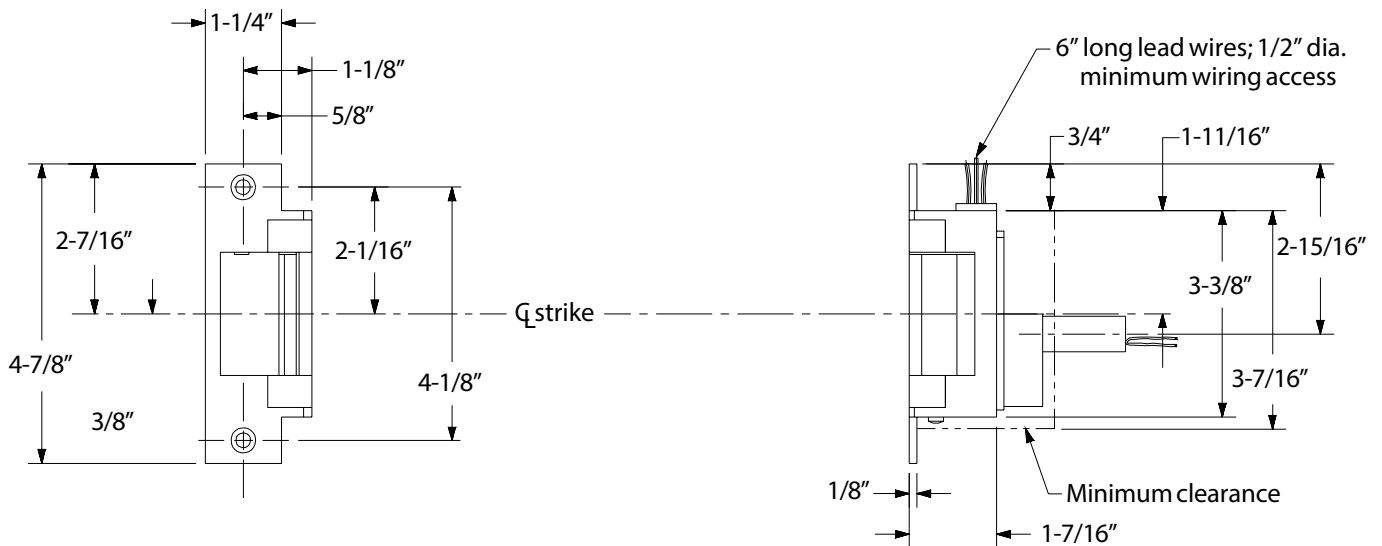
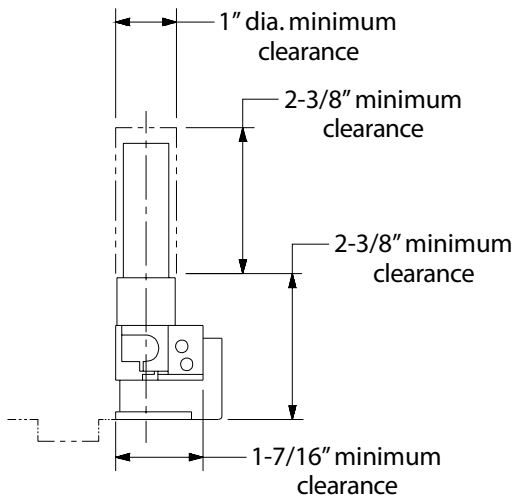
**NOTE:**  
Static Strength Rating 1500 lb.  
Dynamic Strength Rating 70ft.-lb.  
Endurance Rating 250,000 c.



**Figure 4**



### Door Preparation for Strike



### Strike Dimensions and Required Clearances