

**ANSI Grade | UKCA | CE**  
**Commercial Door Hardware**  
**an overview**



T: 01380 729600

[www.relcross.co.uk](http://www.relcross.co.uk)

**relcross door controls®**

# TAKE CONTROL | INTRODUCING THE NEW LCN 4040XP SERIES

LCN®

## 4040XP Series Door Closers

LCN's 4040XP series is best suited to heavy duty situations on perimeter and internal doors where a high level of traffic is anticipated. With over **10 million test cycles** undertaken, the LCN 4040XP copes with the most gruelling applications and has an unrivalled reputation for extreme durability and reliability in use.

### Selected Design Features

- Hinge (Pull Side) Mounting
- Top Jamb (Push Side) Mounting\*
- Stop Face (Push Side) Mounting
- Non-handed for right and left swinging doors
- Cast iron cylinder for rugged performance, longer life and maximum control
- Single-piece, heat-treated forged steel main arms to withstand bending and breaking
- All-weather Liquid X fluid for consistent performance through every season, regardless of temperature changes - between -35° to +49°C
- LCN® Fast™ Power Adjust (Green Dial)
- Fast & accurate installation

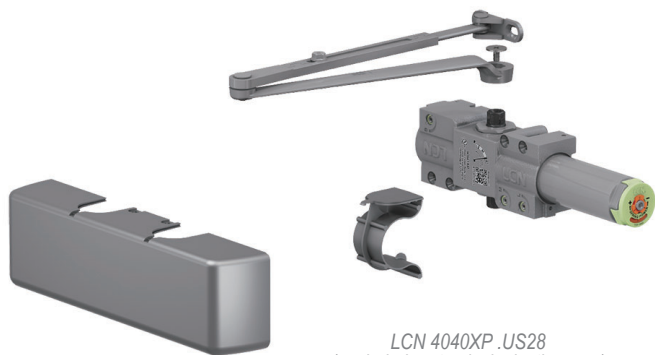


LCN 4040XP.US28 Fig 6—Stop Face (Push Side) Mounting

- The 4040XP is adjustable through EN spring sizes 1—5 (ANSI 1—6)
- The 4040XP series features a complete line of regular and extra duty arms and LCN's peel-n-stick installation templates
- 4040XP closers will control internal doors up to 1524mm wide and external (perimeter) doors to 1220mm
- Adjustable hydraulic backcheck cushions opening swing prior to 90 degrees
- Plastic cover - Standard
- Handed metal cover - Optional

### Stock Finishes

- US28 (689) Powder Coated Silver
- Optional SRI Primer for External Installations



LCN 4040XP .US28  
(exploded parts - incl. plastic cover)

### UK Certification & Warranty

UK  
CAC

€

120  
mins  
TIMBER

60  
mins  
STEEL

GUARANTEE  
30  
THIRTY YEARS

BS EN 1154: 1996 + A1: 2002/AC:2006

UK Fire Certification | BS EN 1634-1:2014 (timber) - 120 mins

UK Fire Certification | BS EN 1634-1:2014 (steel) - 60 mins

WFRC No. 142058 | \*UKCA & CE does not apply to this application

Catalogue Extracts | Certificates  
Installation | Layouts

QR Code or Visit [www.relcross.co.uk](http://www.relcross.co.uk)



# VERSATILE & FLEXIBLE | SUPER STOCK **LCN 1460 SERIES**

**LCN®**

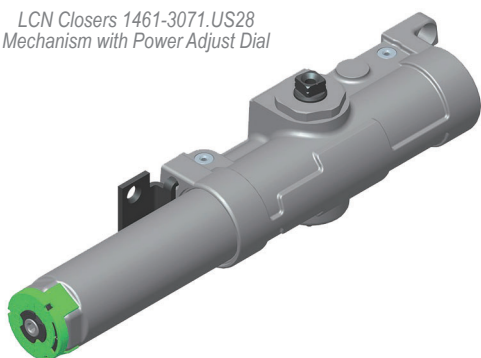
## 1460 Series Door Closers

LCN's 1460 series is best suited to standard duty situations on perimeter and internal doors where a high level of traffic is anticipated. Designed for maximum versatility, this fully universal closer (1461) offers a wide variety of options with new fast & accurate installation.

### Selected Design Features

- Hinge (Pull Side) Mounting
- Top Jamb (Push Side) Mounting
- Stop Face (Push Side) Mounting
- Non-handed for right and left swinging doors
- Cast iron cylinder for rugged performance, longer life and maximum control
- Single-piece, heat-treated forged steel main arms to withstand bending and breaking
- All-weather Liquid X fluid for consistent performance through every season, regardless of temperature changes - between -35° to +49°C
- LCN® Fast™ Power Adjust (Green Dial)
- Fast & accurate installation

*LCN Closers 1461-3071.US28  
Mechanism with Power Adjust Dial*



*LCN 1461 .US28 Fig 1—Pull (Hinge Side) Mounting*

- The 1461 is adjustable through EN spring sizes 2—5 (ANSI 1—6) and mounts to the most common commercial footprint
- The 1460 series features a complete line of regular and extra duty arms and LCN's peel-n-stick installation templates
- The LCN 1460 series manages to cram in amazingly high levels of strength and accurate adjustability
- 'Super Stock' closers will control internal doors up to 1524mm wide and external (perimeter) doors to 1220mm
- Adjustable hydraulic backcheck cushions opening swing prior to 90 degrees
- Plastic cover - Standard

### Stock Finishes

- US28 (689) Powder Coated Silver

### UK Certification & Warranty



**BS EN 1154: 1996 + A1: 2002/AC:2006**

UK Fire Certification | BS EN 1634-1:2014 (timber) - 120 mins

WFR No. 142058

Catalogue Extracts | Certificates  
Installation | Layouts

QR Code or Visit [www.relcross.co.uk](http://www.relcross.co.uk)



# ECONOMIC & ADAPTABLE | SUPER THRIFTEE LCN 1260 SERIES

LCN®

## 1260 Series Door Closers

LCN's 1260 series is best suited to standard duty situations on perimeter and internal doors where a medium level of traffic is anticipated.

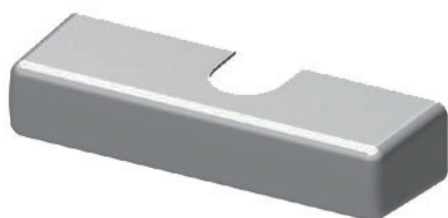
The LCN 1260 series combines the best features from the previous 1070 and 1370 series into a single versatile and economical cast iron closer, with tri-mounting capability.

### Selected Design Features

- Hinge (Pull Side) Mounting
- Top Jamb (Push Side) Mounting
- Stop Face (Push Side) Mounting
- Non-handed for right and left swinging doors
- Cast iron cylinder for rugged performance, longer life and maximum control
- Single-piece, heat-treated forged steel main arms to withstand bending and breaking
- Full rack and pinion hydraulic action
- All-weather Liquid X fluid for consistent performance through every season, regardless of temperature changes
  - between -35° to +49°C
- Fast & accurate installation
- The 1261 is adjustable through EN spring sizes 1—4 (ANSI 1—5) and mounts to the most common commercial footprint
- The 1260 series features a complete line of regular and extra duty arms and LCN's peel-n-stick installation templates
- 'Super Thriftee' closers will control internal doors up to 1372mm wide and external (perimeter) doors to 1067mm
- Plastic (snap-on) cover - Standard (see below)



LCN 1261.US28 Fig 1—Pull (Hinge Side) Mounting



LCN 1260-72 (non-handed)  
Snap-on Plastic Cover

### Stock Finishes

- US28 (689) Powder Coated Silver

### Technical Product Support

Call Relcross Door Controls - Sales Office

T: 01380 729600

### UK Certification & Warranty



BS EN 1154: 1996 + A1: 2002/AC:2006

UK Fire Certification | BS EN 1634-1:2014 (timber) - 120 mins

WFCR No. 142058

Catalogue Extracts | Certificates  
Installation | Layouts

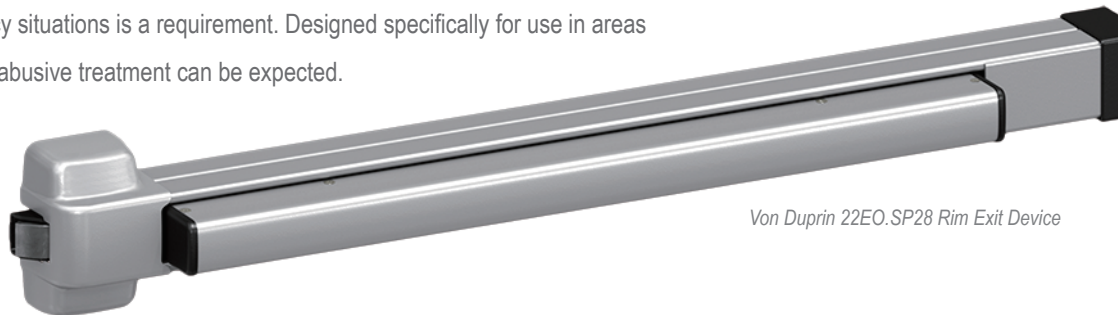
QR Code or Visit [www.relcross.co.uk](http://www.relcross.co.uk)



# FUNCTIONAL & ROBUST | PANIC EXITS **VON DUPRIN 22 SERIES**

## VON DUPRIN® 22 Series Exit Devices

Von Duprin's 22 series is best suited to heavy duty situations on perimeter and internal doors where safe egress in panic emergency situations is a requirement. Designed specifically for use in areas where frequent abusive treatment can be expected.



*Von Duprin 22EO.SP28 Rim Exit Device*

### Selected Design Features

- Construction - Heavy gauge rolled steel
- Device functions - Exit only, night latch & key controlled functions
- Devices always offer egress internally
- Device lengths - Doors <915mm & <1220mm
- Strikes - Suit single leaves, pairs and rebated pairs
- Dogging feature - Hex key dogging keeps the latch bolt held back for free swinging operation
- Fasteners - Fixings for both metal and timber doors with optional bolt through fixings
- Latch bolt - Easy action friction free deadlocking latches cannot be depressed from the outside - with 19mm throw



*Von Duprin 230L.SP28 Outside Access Device*

### Electrical Options

- ALK Alarm Kit
- LX Latch Bolt Monitor Switch
- RX Touch Bar Monitor Switch

### Stock Finishes

- SP28 (698) Sprayed Silver
- SP313 (695) Sprayed Dark Bronze

### Important Note

The inclusion of DT, L, NL and TP outside access devices restricts the fire certification to 60 minutes.

### UK Certification & Warranty



### BS EN 1125: 2008

UK Fire Certification | BS EN 1634-1:2000 (timber) - 120 mins

WFCR No. C132276

Catalogue Extracts | Certificates  
Installation | Layouts

QR Code or Visit [www.relcross.co.uk](http://www.relcross.co.uk)



Von Duprin 2227EO Surface Mounted Vertical Rod Device



# THE QUIET ONE | FIRE & LIFE SAFETY VON DUPRIN 98/99 SERIES

## VON DUPRIN® 98/99 Series Exit Devices

98/99 series devices are wide stile heavy-duty touch bars; used widely in commercial environments, schools and military installations. The Quiet One® - A fluid dampener decelerates the touch bar on its return stroke and eliminates most noise associated with exit device operations. Furnished on all 98 series exit devices and all 99 series exit devices.

### Selected Design Features

- Construction - Extruded aluminium
- Device functions - Exit only, night latch & key controlled functions
- Devices always offer egress internally
- Device lengths - Doors <915mm & <1220mm
- Strikes - Suit single leaves, pairs and rebated pairs
- Dogging feature - Hex key dogging keeps the latch bolt held back for free swinging operation
- Fasteners - Fixings for both metal and timber doors with optional bolt through fixings
- Latch bolt - Easy action friction free deadlocking latches cannot be depressed from the outside - with 19mm throw

### Selected Trim Options

- DT - Dummy Trim
- K - Knob
- L - Lever (Shown)
- NL - Night Latch



*Von Duprin 996L(06).US26D  
Outside Access Device*



*Von Duprin 99EO.US28 Rim Exit Device*

### Device Types

- Rim (No Suffix)
- 27 Surface Mounted Vertical Rod
- 47 Concealed Vertical Rod (Not Fire Rated)
- 57 Surface Mounted Vertical Rod & Latch
- 75 Mortice Lock (Not Fire Rated)

### Electrical Options

- ALK Alarm Kit
- LX Latch Bolt Monitor Switch
- RX Touch Bar Monitor Switch
- EL Electric Latch Retraction
- QEL Quiet Electric Latch Retraction

### Stock Finishes

- US28 (689) Satin Anodized Aluminium

### Important Note

The inclusion of DT, K, L, NL and TP outside access devices restricts the fire certification to 60 minutes.

### UK Certification & Warranty



### BS EN 1125: 2008

UK Fire Certification | BS EN 1634-1:2000 (timber) - 120 mins

WFRC No. C132276

Catalogue Extracts | Certificates  
Installation | Layouts

QR Code or Visit [www.relcross.co.uk](http://www.relcross.co.uk)



# STREAMLINED | NARROW STILE VON DUPRIN 33A/35A SERIES

## VON DUPRIN®

### 33A/35A Series Exit Devices

33A/35A series devices are best suited to heavy duty situations on narrow stile perimeter and internal doors where safe egress in panic emergency situations is a requirement. 33A & 35A designs provide solutions with optional outside access devices for narrow stile applications from 44mm.



Von Duprin 33AEO.US28 Rim Exit Device

#### Selected Design Features

- Construction - Extruded aluminium
- Device functions - Exit only, night latch & key controlled functions
- Devices always offer egress internally
- Device lengths - Doors <915mm & <1220mm
- Strikes - Suit single leaves, pairs and rebated pairs
- Dogging feature - Hex key dogging keeps the latch bolt held back for free swinging operation
- Fasteners - Fixings for both metal and timber doors with optional bolt through fixings
- Latch bolt - Easy action friction free deadlocking latches cannot be depressed from the outside - with 19mm throw

#### Selected Trim Options

- DT - Dummy Trim
- L - Lever (Shown)
- NL - Night Latch
- TP - Thumbturn



Von Duprin 360L.US26D Outside Access Device

#### Device Types

- Rim (No Suffix)
- 27 Surface Mounted Vertical Rod
- 47 Concealed Vertical Rod (Not Fire Rated)

#### Electrical Options

- ALK Alarm Kit
- LX Latch Bolt Monitor Switch
- RX Touch Bar Monitor Switch
- EL Electric Latch Retraction
- QEL Quiet Electric Latch Retraction

#### Stock Finishes

- US28 (689) Satin Anodized Aluminium

#### Important Note

The inclusion of DT, L, NL and TP outside access devices restricts the fire certification to 60 minutes.

#### UK Certification & Warranty



#### BS EN 1125: 2008

UK Fire Certification | BS EN 1634-1:2000 (timber) - 120 mins

WFR No. C132276

Catalogue Extracts | Certificates  
Installation | Layouts

QR Code or Visit [www.relcross.co.uk](http://www.relcross.co.uk)



# FIRE RATED | MECHANICAL DIGITAL LOCKS **KEYLEX 700 SERIES**

## KEYLEX

### 700 Series Mechanical Digital Locks

Use the Keylex 700 series on all standard duty, high security external door installations and on any door where a flexible Euro profile key system is required. Always choose the K2100K option for military, police and fire service installations. The narrow stile Keylex 700 design, with its built-in clutch mechanism protecting the lock furniture, will suit all stile widths down to 45mm and is particularly suited for use on aluminium and hollow metal door sections. The Keylex 700 can be expected to give many years' service if specified and maintained correctly.

#### Selected Design Features (K500, K700 & K800)

- Standard duty mechanism -  
Allows many hundreds of operations per day
- Entirely mechanical operation -  
No electronics or electrical wiring involved
- Over 4,000 selectable code permutations -  
Recommended 3 to 6 digit codes
- Code scramble -  
Allows all codes to be entered in any order
- Removable mounting pillar - Accommodates all  
conventional DIN style cylinder lock case heights
- Slipping clutch mechanism -  
Nullifies forced attack or vandalism from the outside
- Brushed stainless steel buttons - Will not indicate usage
- Passage function -  
Allows free passage from both sides

#### Keylex K2100K

- Heavy duty alternative  
w. double throw deadlocking latch
- BS 8607 2014 - Grade 3



Keylex K700L.72.72.SC

#### Keylex K500

- Standard duty alternative  
w. tubular deadlocking latch



#### Keylex K800

- Standard duty alternative  
w. double throw deadlocking latch
- BS 8607 2014 - Grade 3



#### Keylex K900

- Standard duty alternative
- On-door code changing



#### UK Certification (K700 Only) & Warranty (All Models)



Keylex 700 | with Briton 5420 sash lock case  
UK Fire Certification | BS EN 1634-1 & EN 1634-1 - all versions:  
(timber/mineral based door sets) - 30 mins  
WFRC No. 513976

Catalogue Extracts | Certificates  
Installation | Layouts

QR Code or Visit [www.relcross.co.uk](http://www.relcross.co.uk)



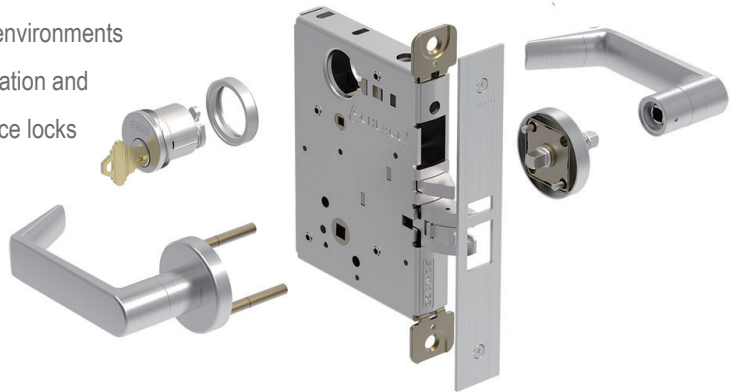


# STRONG & VERSATILE | MORTICE LOCKS **SCHLAGE L SERIES**

## SCHLAGE®

## L Series Extra Heavy Duty Mortice Locks

Best suited for use in schools, hospitals, military, police and similar environments where the finest hardware must deliver consistent, dependable operation and stand up to constant use and abuse. L series extra heavy duty mortice locks are built to withstand the rigours of these demanding environments.



*Schlage L9050P.06A.626 Entrance/Office Lock*

### Selected Design Features

- Fully wrapped heavy gauge steel case protects against door edge attacks
- All metal zinc dichromate plated working parts
- 2-piece anti-friction tongue reduces wear and tear
- Outside and inside trim bolted together and through the door
- Break-away spindle prevents unsecured failures and provides easy spindle replacement
- Hub blocking plate protects against spindle manipulation
- Inside lever applied by screwless shank mounting – No exposed trim mount screws
- Field reversible handing without opening lock case
- External spring cages allow for simple trim retrofit
- Lever rotation in both directions (up & down) for ease of use
- Independent lever rotation
- Door thickness suitability - 44mm standard 35mm to 64mm optional
- We can provide master keyed systems, systems incorporating standard full face cylinders, full size interchangeable core cylinders - FSIC, small format interchangeable core cylinders - SFIC and various construction core programmes
- All L9000 series mortice locks (except electrified versions, non-keyed dummies and locks with the holdback function) are UKCA marked (BS EN 12209: 2003) for use on steel doors (see below)



*Schlage 20-001.114.\_626  
Default mortice cylinder w. 2 keys*

### Stock Finishes

- US26D (626) Satin Chrome (L9080 (03A & 42A))

### UK Certification & Warranty



### BS EN 12209: 2003

UK Fire Certification | BS EN 1634-1:2008 (steel) - 180 mins  
WFRC No. 335640

Catalogue Extracts | Certificates  
Installation | Layouts

QR Code or Visit [www.relcross.co.uk](http://www.relcross.co.uk)



# HEAVY DUTY | OVERHEAD CONTROLS GJ 70 & 79 SERIES

## GLYNN-JOHNSON®

### 70 & 79 Series Door Holders & Stops

Use these door holders/stops in heavy duty (70 series) and extra heavy duty (79 series) situations on perimeter doors where door/frame protection is important. The optional hold open function is an automatic mechanism that 'kicks-in' when the door is opened to a preset angle. The stop only function provides a buffered stop, again at a preset angle. In both instances that angle will be between 85° and 110° from closed.

#### Selected Design Features

- Both 70 & 79 series models are constructed primarily of brass and 300 series stainless steel substrates
- 70 series utilizes a 13mm dia. stainless steel bar
- 79 series utilizes a 19mm dia. stainless steel bar
- All bars are provided in US32D satin stainless steel
- Door brackets, jamb brackets and hooks (for hold open units) are available in a number of alternative painted and plated finishes
- 70H & 79H series hold open models (suffix H) provide a selective hold open function with tension adjustment
- Templates allow for variable mounting positions, ranging from 85° to 110° hold open/stop angles
- An angle jamb bracket is available to convert standard models to hinge side or flush transom mounting



Glynn-Johnson 79 Series  
Extra Heavy Duty Door Holder/Stop

- 70 series holders and stops & 79 series holders and stops are designed to meet the demands of high traffic and exposed doors in commercial applications

#### Size Table

Jamb to Jamb	70 Series	79 Series
585 - 686mm	702	792
687 - 838mm	703	793
839 - 991mm	704	794
992mm - 1143mm	705	795
1144mm - 1372mm	706	796

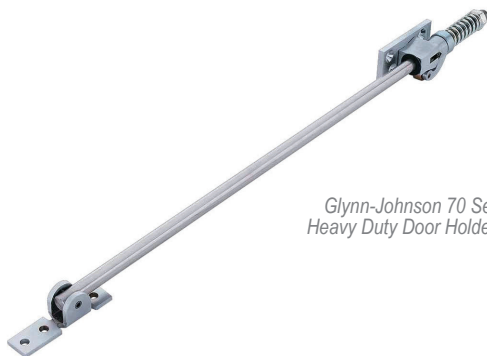
#### Stock Finishes

- SP28 Silver (Powder Coated to Match Aluminium)

#### UK Certification & Warranty



These door holders and stops can be used on most types of doors, including all doors hung with conventional hinges, centre pivot sets and offset pivot sets.



Glynn-Johnson 70 Series  
Heavy Duty Door Holder/Stop

Catalogue Extracts | Certificates  
Installation | Layouts  
QR Code or Visit [www.relcross.co.uk](http://www.relcross.co.uk)



70 Series

Catalogue Extracts | Certificates  
Installation | Layouts  
QR Code or Visit [www.relcross.co.uk](http://www.relcross.co.uk)



79 Series

# HOLLOW METAL DOORS | FLUSH BOLTS **IVES FB SERIES**

## IVES®

## FB Series Manual & Automatic Flush Bolts

For use at the leading edge of pairs of doors (top and/or bottom). Best suited to perimeter & internal rated pairs of hollow metal doors where alternative locking hardware may be unsuitable. Correct hardware specification on plain meeting and rebated pairs of doors is vital to ensure integrity is maintained.

Flush bolts provide a means to ensure fixed leaves are held in position (manual) or released (automatic) when the active leaf of a pair of doors is opened.

### Selected Design Features (Manual)

- Simplified installation in metal frames
- Round bolt head requires only a punched hole
- Use of strike optional
- Special design of guide and flat sided bolt tip to prevent bolt rotation

### Selected Design Features (Automatic)

- Fully automatic - Inactive door is latched: bolts are extended when active door closes, door is unlatched: bolts retract when active door is opened
- Low actuation forces - Top bolt has no spring tension
- Not suitable for rebated door installations



*Ives FB31P.US32D  
Automatic Flush Bolt (Pair)*



*Ives FB458.US26D  
Manual Flush Bolt*

### Selected Design Features (Manual & Automatic)

- Non-handed
- Bolt tip is 13mm diameter
- Bolt throw is 19mm with a 22mm vertical adjustment
- Bolt backset is 19mm
- Standard rod length is 305mm measured from the centre of the flush bolt body to the bolt tip
- Optional rod lengths available - Rod lengths may be increased to a maximum 1219mm without affecting the validity of the fire certification
- DP1 & DP2 optional dust proof strike available

### Stock Finishes

- US26D (626) Satin Chrome (FB458)
- US32D (630) Stainless Steel (FB31P & FB31B)

### UK Certification & Warranty



UK Fire Certification | BS EN 1634-1:2008 (steel) - 240 mins  
WFRC No. 335640

Catalogue Extracts | Certificates  
Installation | Layouts  
QR Code or Visit [www.relcross.co.uk](http://www.relcross.co.uk)



# relcross door controls®

## Product Portfolio

relcross door controls® offers a complete range of compatible hardware products from which a properly matched successful door package can be selected with total confidence.

QR Code or Visit [www.relcross.co.uk](http://www.relcross.co.uk)



## Adding Value

relcross door controls® provides specifiers, designers, architectural ironmongers, contractors and end users with quality door control solutions backed by a sound understanding of applications, design, performance and certification requirements.

## Specification Services

relcross door controls® offers a free technical specification and advisory service to assist you in the correct choice of equipment. We keep substantial stocks of most products. Our team of trained specifiers will discuss problems, offer guidance, make recommendations and, most importantly, help on site if difficulties should occur.



LCN 4040XP.US28  
Tandem Closer for Doors <272 Kilos

## Special Solutions

relcross door controls® will consider any and all potential scenarios - however complex you may believe them to be. Often, it is a subject we have addressed previously and one for which we may have available a tried and tested solution.

## Door Hardware Division Partners

- **Briton**  
Closers, Exits & Locks
- **Glynn Johnson**  
Heavy Duty Door Holders
- **Ives Hardware**  
Flush Bolts & Coordinators
- **Keylex**  
Heavy Duty Mechanical Digital Locks
- **LCN Closers**  
Heavy Duty Door Closers & Controls
- **Normbau**  
Lever Sets, Pull Handles & Accessories
- **Pemko**  
Weatherstripping
- **Schlage**  
Heavy Duty Mortice Locks
- **Von Duprin**  
Heavy Duty Exit Devices & Electric Strikes

## Washroom Division Partners

- **Bradley**  
Washroom Equipment
- **Hadrian**  
Toilet Cubicles & Lockers

email: [sales@relcross.co.uk](mailto:sales@relcross.co.uk) | Tel: +44 (0) 1380 729600  
Relcross Ltd | Hambleton Avenue | DEVIZES | Wiltshire | SN10 2RT | UK  
[www.relcross.co.uk](http://www.relcross.co.uk) | [www.doorhardware-online.co.uk](http://www.doorhardware-online.co.uk) | [www.hadrian-cubicles.co.uk](http://www.hadrian-cubicles.co.uk)

