



## CONTENTS:

H180A Series .....	232
SHS80 Series .....	233
Sliding 200 Series .....	234
Side Wall Track System .....	237
Bypass Track Series .....	238
SIM200A Series .....	239
LP200 Series .....	240
Sirocco Series .....	241
H300S-OH Series .....	242
H300S-SW Series .....	243
H440A-OH Series .....	244
H440A-SW Series .....	245
H600S-OH Series .....	246
H600S-SW Series .....	247
H800S-OH Series .....	248
H800S-SW Series .....	249
H1100A-OH Series .....	250
H1100A-SW Series .....	251
Husky Sliding Glass Series .....	252
Pocket Frame Kit .....	253
Folding 100 Series .....	254
Pacer Interior End Fold Series .....	255
Flexirol Interior End Fold Series .....	256
Sliding Track Hardware System for Wood Doors .....	257-263
Sliding Track Hardware System for Glass Doors .....	264-268
Builders Series for Wood Doors .....	269-270
Designer Series for Wood Doors .....	271-274
SIM150- 2 Door .....	275
SIM150- 3 Door .....	276
Options & Accessories .....	277

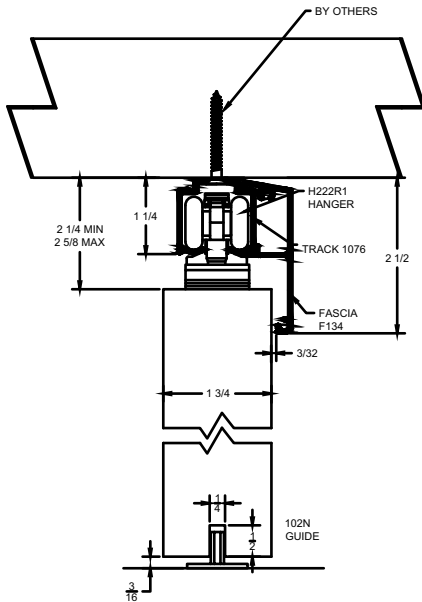
## INDEX:

PRODUCT	PAGE	PRODUCT	PAGE	PRODUCT	PAGE	PRODUCT	PAGE	PRODUCT	PAGE
12.....	264	1A/290.....	242	550A.....	250, 251, 256	GLASSGUIDE.....	264-268	PF28200A.....	253
22.....	266	1A/290/EC.....	242-243	556/21.....	256	FIF2/275A.....	256	PFAS.....	253
32.....	265	1A/301.....	247, 249	556/57.....	250-251	H200PACK.....	234-238, 277	PFAS100.....	253
42.....	267	1A/301/EC.....	246-249	57A/N.....	248-249	H1100A-OH.....	250	PFAS88.....	253
52.....	268	1A/550.....	251	57A/S.....	246-247	H1100A-SW.....	251	PFBG-4.....	253-277
62.....	257-258	1AX/290.....	243	57B.....	244-245	H180A.....	232	PFBG-8.....	253-277
72.....	259	1AX/301.....	247, 249	57K/N.....	242-243	H200.....	234	PFBS.....	253-277
82.....	260	1B.....	245	600A.....	244-245, 255	H222R1.....	232-239	PFCDKIT.....	253
92.....	261	1BX.....	245	601H.....	244-245, 255	H300S-OH.....	242	PF8C-8.....	253
111.....	262-263	21/550/P.....	256	601P.....	244-245	H300S-SW.....	243	PFHB-1.....	253
280.....	233-234, 238-240, 252, 254, 277	21B/P.....	255	8-12/SN.....	252	H440A-OH.....	244	PFHB-2.....	253
281.....	232-234, 238-240, 252, 254, 277	21BO/4.....	255	89/2N.....	242-251	H440A-SW.....	245	PFHS.....	253
283.....	254	21N/94.....	255	94A.....	232-240, 242-251, 254-263, 269-274, 277	H600S-OH.....	246	PFKIT-4.....	253
290.....	242-243	21R/94.....	256	971A.....	232-234, 239-240, 242, 244, 246, 248, 250, 254-256, 277	H600S-SW.....	247	PFKIT-8.....	253
301.....	246-251	280_-SWF.....	235	BAR.....	257-268	H800S-OH.....	248	PIF2/165A.....	255
2812.....	238, 277	280_-SWT.....	235-237	BRACKET2.....	257-268	H800S-SW.....	249	PIF4/165A.....	255
102N.....	232-240, 242-249, 257-263, 269, 270, 277	2802.....	238, 275	DELLH/DELRH.....	241	HBP200A.....	238	SHS80.....	233
102WA.....	232-237, 239, 243, 245, 247, 249, 277	2802BT.....	238, 277	EPD3.....	232-234, 239, 259-263, 269-270, 275-276	HF2/100.....	254	SIM100.....	239
102WN.....	232-237, 239, 243, 245, 247, 249, 269-274	2803.....	276	F134.....	233-234, 238-239, 275-277	HF2/100PACK.....	277	SIM150.....	275-276
106HF/94.....	254	280_SWTKIT.....	235	F160C.....	244	HF4/100.....	254	SIM150-BOLTKIT.....	275-276
106N/94.....	277	282HD.....	254	F160ECP.....	244	HH3/290.....	242-243	SIM150-LOCKKIT.....	275-276
106R/94.....	232-240, 242-251, 258-263, 269-274, 277	284D.....	252	F200C.....	245	HH3/301.....	246-251	SIM200A.....	239
1075C.....	232	287HD.....	232, 234, 238, 277	F200ECP.....	245	K1077_-SWEP.....	232	SIRF/2500.....	241
1076.....	232	289B.....	254	F234.....	252, 277	K134EP.....	233-234, 239, 277	SIRLH/SIRRH.....	241
		289T.....	254	G60 to G100.....	264-268	K134DEP.....	233, 234, 239	STOP1.....	265, 277
		3A/290.....	242			K28_-SWEP.....	235	STOP2.....	257, 259-262, 264-268
		3A/301.....	246, 248			LH100.....	240	W60 to W100.....	257-263
		3AX/290.....	242			LP200A.....	240	WOODGUIDE.....	257
		3AX/301.....	246, 248			PF134 KIT.....	253		
		403/2.....	255-256						

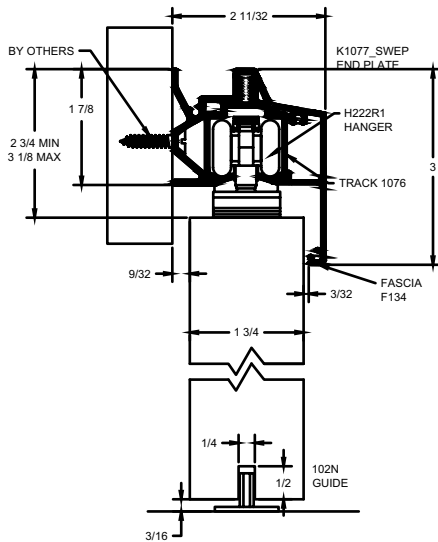
## H180A Series

For Sliding Panels up to 180 lbs.

### Overhead Mount



### Side Wall Mount



### Configurations:

- Single
- Bi-parting

### Installations:

- Overhead Mount
- Side Wall Mount

### Features:

- Hanger body is made of nickel plated zinc alloy for durability and long life
- Zinc alloy ball bearing wheels coated in nylon for smooth operation
- 180 lb. panel capacity
- Optional side wall bracket reduces the amount of wall space needed to mount the track
- 5 year warranty

### H180A Kits Include:

- 1 ea **1076C** Clear Anodized Aluminum Track
- 2 ea **H222R1** - Nickel Plated Zinc Alloy Body  
Zinc Alloy Wheels Coated in Nylon
- 2 ea **287HD** Rubber Bumper In-Track Stop
- 1 ea **102N** White Nylon Mortise Guide

### Standard Kit Sizes

Part Number	Material	Track Length	Door Width
H180A/6	Aluminum	72"	36"
H180A/8	Aluminum	96"	48"
H180A/10	Aluminum	120"	60"
H180A/12	Aluminum	144"	72"

### Options: See page 275

Fascia

**F134C** clear anodized aluminum fascia

**F134D** dark bronze anodized fascia

Side Wall Track Bracket

**1075C** clear anodized aluminum bracket- order same length as track

**1075D** dark bronze aluminum bracket

Track

**1076D** dark bronze anodized track

End Plate Kit

**K1077C-SWEP** (use with F134C fascia and 1075C side wall bracket only)

**K1077D-SWEP** (use with F134D fascia and 1075D side wall bracket only)

Bottom Channel

**94A**

Roller Guide

**106R/94**

Threshold

**971A**

Side Wall Mount

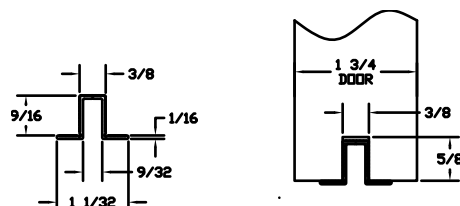
**102WN** (nylon) and **102WA** (steel)

Mortise Guides

Polypropylene Guide Rail

**EPD3BL** for use with 102N or 102WN

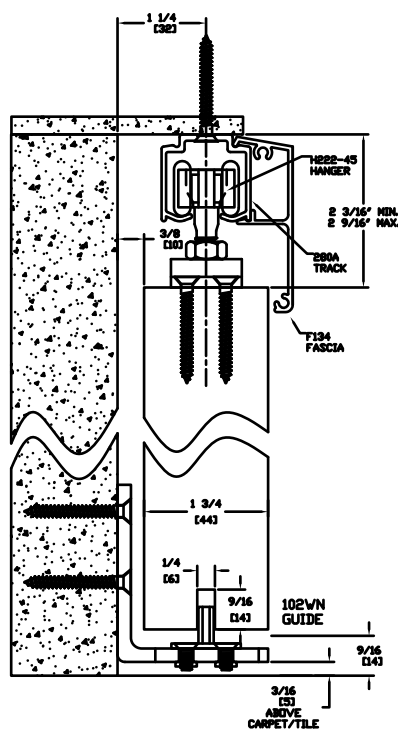
### Alternate Route for EPD3BL



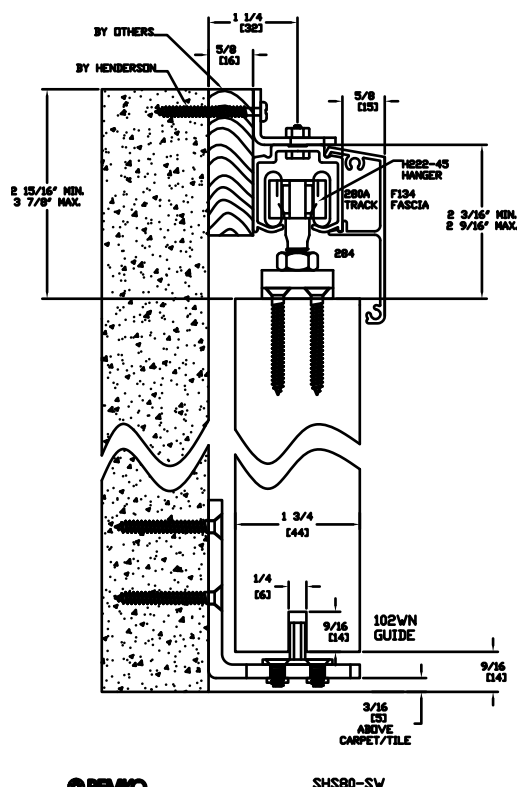
# SHS80 Series

For Sliding Panels up to 180 lbs.

## Overhead Mount



## Side Wall Mount



## Configurations:

- Single
- Bi-parting

## Installations:

- Overhead Mount
- Side Wall Mount

## Features:

- Hanger body is made of nickel plated zinc alloy for durability and long life
- Zinc alloy ball bearing wheels coated in nylon for smooth operation
- 180 lb. panel capacity
- 5 year warranty

## SHS80 Kits Include:

- 1 ea **280C** Clear Anodized Aluminum Track
- 2 ea **H222R1** - Nickel Plated Zinc Alloy Body
- 2 ea **601H** Nylon In-Track Clip Stop
- 1 ea **102WN** White Nylon Mortise Guide on Zinc Plated Steel "L" Metal

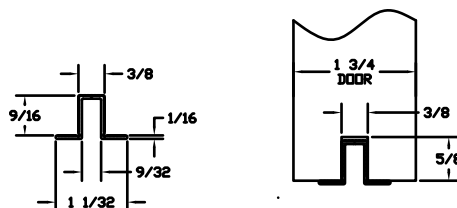
## Standard Kit Sizes

Part Number	Material	Track Length	Door Width
SHS80/6	Aluminum	72"	36"
SHS80/8	Aluminum	96"	48"

## Options: See page 275

- Fascia **F134C** clear anodized aluminum fascia  
**F134D** dark bronze anodized fascia
- Side Wall Track Brackets **281** available as 5 pack only, 2815
- Track **280D** dark bronze anodized track
- End Plate Kit **K134EP** (use with F134C and 280C only)  
**K134DEP** (use with F134D and 280D only)
- Bottom Channel **94A**
- Roller Guide **106R/94**
- Threshold **971A**
- Side Wall Mount **102WA**
- Mortise Guides **102N**
- Mortise Floor Guide **102N**
- Polypropylene Guide Rail **EPD3BL** for use with 102N or 102WN

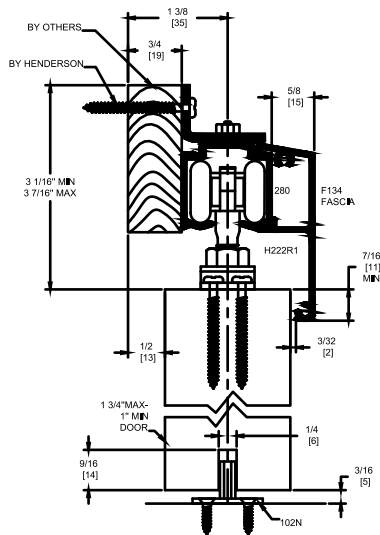
## Alternate Route for EPD3BL



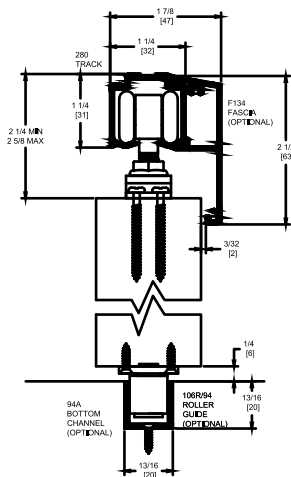
## Sliding 200 Series

For Sliding Panels up to 200 lbs.  
Manufactured by P.C. Henderson

### 280C Side Wall Mounted



### 280C Soffit Mounted with Fascia



#### Configurations:

- Single
- Bi-parting

#### Installations:

- Overhead Mount
- Side Wall Mount
- Face/Face Fixed Mount with Fascia

#### Features:

- Hanger body is made of nickel plated zinc alloy for durability and long life
- Zinc alloy ball bearing wheels coated in nylon for smooth operation
- 200 lb. panel capacity
- Galvanized steel track 280
- Clear anodized aluminum track 280C
- 2 year warranty

#### H200A Kits Include:

- 1 ea **280C** Clear Anodized Aluminum Track
- 2 ea **H222R1** Hangers
- 1 ea **102N** Nylon Guide
- 2 ea **TELS-14KIT** Stops
- 1 ea Adjusting Wrench and Mounting Hardware

#### H200 Kits Include:

- 1 ea **280** Steel Track
- 2 ea **H222R1** Hangers
- 1 ea **102N** Nylon Guide
- 2 ea **TELS-14KIT** Stops
- 1 ea Adjusting Wrench and Mounting Hardware

#### Standard Kit Sizes

Part Number	Material	Track Length	Door Width
H200A/4	Aluminum	48"	24"
H200A/5-4	Aluminum	64"	32"
H200A/6	Aluminum	72"	36"
H200A/7	Aluminum	84"	42"
H200A/8	Aluminum	96"	48"
H200A/10	Aluminum	120"	60"
H200A/12	Aluminum	144"	72"
H200/6	Steel	72"	36"
H200/8	Steel	96"	48"

#### Options: See page 275

Hardware Kit  
Mounting Bracket

#### H200PACK

**281** available as 5 pack only, **2815**  
NOTE: Need one at each end and no more than 3 feet in between.

Fasteners included

Track Stop (bumper)  
Bottom Channel  
Fascia, Snap-On

#### 287HD

#### 94A

**F134C** in clear anodized (**280C** only)  
**F134D** dark bronze anodized fascia

Track  
Roller Guide  
Side Wall Mortise Guide  
Threshold  
End Plate

**280D** dark bronze anodized  
**106R/94**

**102WA** (steel) and **102WN** (nylon)

#### 971A

**K134EP** (use with F134C and 280C only) **K134DEP** (use with F134D and 280D only)

Polypropylene Guide Rail **EPD3BL** for use with 102N or 102WN



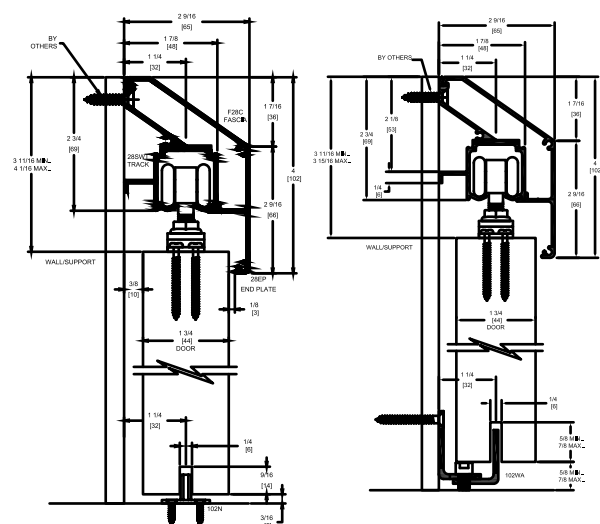
## Side Wall Track (SWT) System

For Sliding Panels up to 200 lbs.

The Pemko Side Wall Track System has a unique mounting bracket that is extruded with the track. An innovative wall mounted bottom guide assembly allows carpet to be replaced without removing the door.



### SWT Kit Side Wall Mounted



### Configurations:

- Single
- Bi-parting

### Features:

- Unique mounting bracket extruded into track
- Supports up to 200 lbs. per door
- Quick, easy attachment
- New construction or retrofit
- 5 year warranty

### 280SWT Kits Include:

- 1ea **280\_SWT** Aluminum Track
- 1ea **280\_-SWF** Aluminum Fascia
- 1ea **K28\_-SWEP** Pair of End Plates
- 2ea **H222R1** Hangers
- 2ea **TELS-14KIT** In Track Stops
- 1ea **102N** White Nylon Mortise Guide
- 1ea **102WA** Wall Mounted Mortise Guide
- 1ea Adjusting Wrench

### Standard Kit Sizes

Part Number	Track Length	Door Width
(Mill Finished Track/Clear Anodized Fascia/End Plates)		
280C-SWTKIT/5	60"	30"
280C-SWTKIT/6	72"	36"
280C-SWTKIT/8	96"	48"
280C-SWTKIT/12*	144"	2 @ 36"
(Dark Bronze Anodized Track/Fascia/End Plates)		
280D-SWTKIT/5	60"	30"
280D-SWTKIT/6	72"	36"
280D-SWTKIT/8	96"	48"
280D-SWTKIT/12*	144"	2 @ 36"

\*NOTE: 280\_-SWTKIT/12 comes with enough hardware for two doors.

### Options: See page 275

- Hardware Kit (one door) **H200PACK**
- Roller Guide **106R/94**
- Bottom Channel **94A**
- Nylon Mortise Guide **102WN**
- Stainless Steel Flush Bolt **FB150SS**
- Stainless Steel Flush Bolt with Black E Coating **FB150SS**
- Stainless Steel Flush Pull **503SF**

AVAILABLE FINISHES FOR PRODUCTS SHOWN ON THIS PAGE (see General Information section for finish chart)

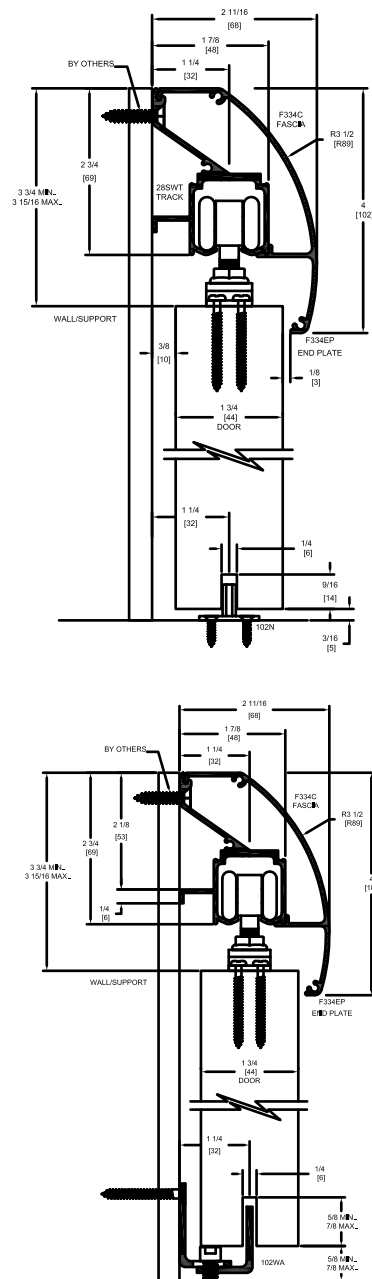
A (Mill Finish Aluminum) C (Anodized Aluminum) D (Dark Bronze Anodized)

## Side Wall Track System with Radius Fascia (RF280\_-SWTK)

**For Sliding Panels up to 200 lbs.**

Pemko Side Wall Track Systems have a unique mounting bracket that is extruded into the track. An innovative wall mounted bottom guide assembly allows carpet to be replaced without removing the door.

### SWT Kit Side Wall Mounted



### Configurations:

- Single
- Bi-parting

### Features:

- Unique mounting bracket extruded into track
- Supports up to 200 lbs. per door
- Quick, easy attachment
- New construction or retrofit
- 5 year warranty

### 280SWT Kits Include:

- 1ea **RF280\_-SWTK** Aluminum Track
- 1ea **F334\_** Aluminum Fascia
- 1ea **KF334\_-SWEP** Pair of End Plates
- 2ea **H222R1** Hangers
- 2ea **TELS-14KIT** In Track Stops
- 1ea **102N** White Nylon Mortise Guide
- 1ea **102WA** Wall Mounted Mortise Guide
- 1ea **Adjusting Wrench**

### Standard Kit Sizes

Part Number	Track Length	Door Width
(Mill Finished Track/Clear Anodized Fascia/End Plates)		
RF280C-SWTK/5	60"	30"
RF280C-SWTK/6	72"	36"
RF280C-SWTK/8	96"	48"
RF280C-SWTK/12 *	144"	2 @ 36"
(Dark Bronze Anodized Track/Fascia/End Plates)		
RF280D-SWTK/5	60"	30"
RF280D-SWTK/6	72"	36"
RF280D-SWTK/8	96"	48"
RF280D-SWTK/12 *	144"	2 @ 36"

\*NOTE: RF280\_-SWTK/12 comes with enough hardware for two doors.

### Options: See page 275

- Hardware Kit (one door) **H200PACK**
- Roller Guide **106R/94**
- Bottom Channel **94A**
- Nylon Mortise Guide **102WN**
- Stainless Steel Flush Bolt **FB150SS**
- Stainless Steel Flush Bolt with Black E Coating **FB150SSBL**
- Stainless Steel Flush Pull **503SF**

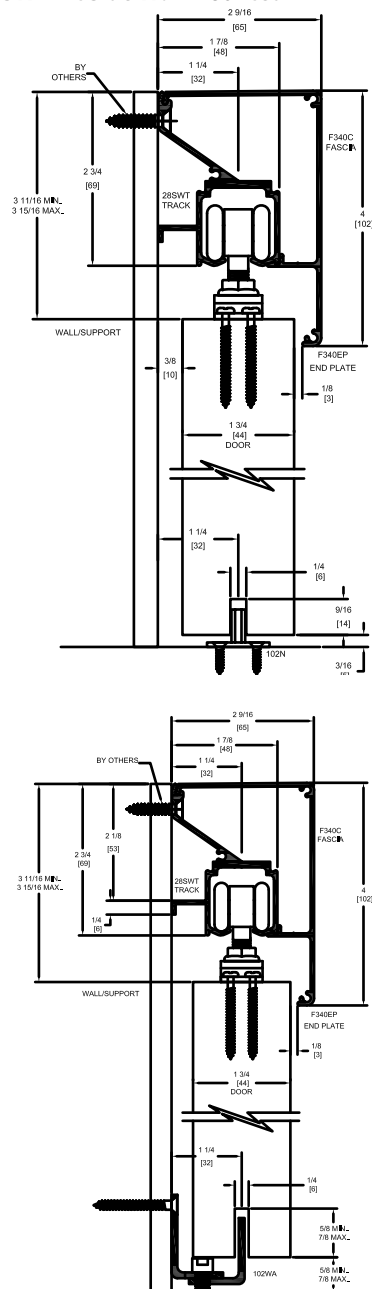
AVAILABLE FINISHES FOR PRODUCTS SHOWN ON THIS PAGE (see General Information section for finish chart)  
A (Mill Finish Aluminum) C (Clear Anodized) D (Dark Bronze Anodized)

## Side Wall Track System with Square Fascia (SF280\_-SWTK)

For Sliding Panels up to 200 lbs.

Pemko Side Wall Track Systems have a unique mounting bracket that is extruded with the track. An innovative wall mounted bottom guide assembly allows carpet to be replaced without removing the door.

### SWT Kit Side Wall Mounted



### Configurations:

- Single
- Bi-parting

### Features:

- Unique mounting bracket extruded into track
- Supports up to 200 lbs. per door
- Quick, easy attachment
- New construction or retrofit
- 5 year warranty

### 280SWT Kits Include:

- 1ea **SF280\_-SWTK** Aluminum Track
- 1ea **F340\_** Aluminum Fascia
- 1ea **KF340\_-SWEP** Pair of End Plates
- 2ea **H222R1** Hangers
- 2ea **TELS-14KIT** In Track Stops
- 1ea **102N** White Nylon Mortise Guide
- 1ea **102WA** Wall Mounted Mortise Guide
- 1ea **Adjusting Wrench**

### Standard Kit Sizes

Part Number	Track Length	Door Width
(Mill Finished Track/Clear Anodized Fascia/End Plates)		
SF280C-SWTK/5	60"	30"
SF280C-SWTK/6	72"	36"
SF280C-SWTK/8	96"	48"
SF280C-SWTK/12 *	144"	2 @ 36"
(Dark Bronze Anodized Track/Fascia/End Plates)		
SF280D-SWTK/5	60"	30"
SF280D-SWTK/6	72"	36"
SF280D-SWTK/8	96"	48"
SF280D-SWTK/12 *	144"	2 @ 36"

\*NOTE: SF280\_-SWTK/12 comes with enough hardware for two doors.

### Options: See page 275

- Hardware Kit (one door) **H200PACK**
- Roller Guide **106R/94**
- Bottom Channel **94A**
- Nylon Mortise Guide **102WN**
- Stainless Steel Flush Bolt **FB150SS**
- Stainless Steel Flush Bolt with Black E Coating **FB150SSBL**
- Stainless Steel Flush Pull **503SF**

AVAILABLE FINISHES FOR PRODUCTS SHOWN ON THIS PAGE (see General Information section for finish chart)

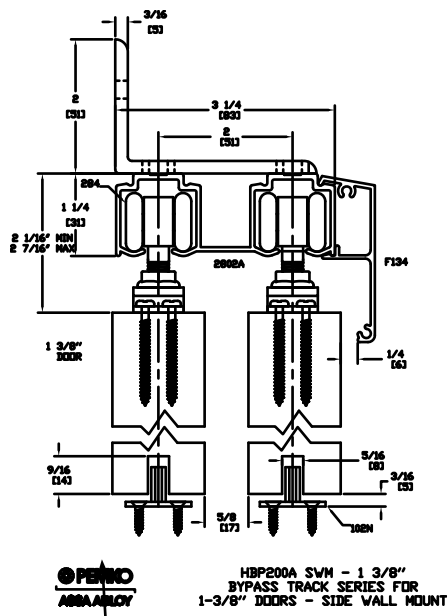
A (Mill Finish Aluminum) C (Clear Anodized) D (Dark Bronze Anodized)

## Bypass Track Series

For Bypass Panels up to 200 lbs.

### 1 $\frac{3}{8}$ " Thick Doors

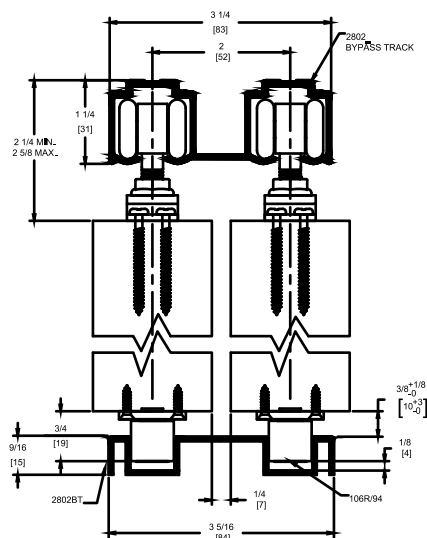
#### Doors Side Wall Mount



NOTE: Route door  $\frac{9}{16}$ " deep by  $\frac{1}{4}$ " wide to receive 102N Guide.

### 1 $\frac{3}{4}$ " Thick Doors

#### Overhead Mount



\* Side Wall mounting: use one (1) 2812 Kit per 3 ft. of track.

#### Configurations:

- For Bypass Doors

#### Features:

- Fits 1 $\frac{3}{8}$ " and 1 $\frac{3}{4}$ " doors
- Hanger body is made of nickel plated zinc alloy for durability and long life
- Zinc alloy ball bearing wheels coated in nylon for smooth operation
- 200 lb. panel capacity
- Load capacity 200 lbs. per door panel (2 hangers)
- Extruded aluminum track
- 5 year warranty

#### HBP200A Kits Include:

- 1 ea **2802C** Clear Anodized Aluminum Track
- 4 ea **H222R1** Hangers
- 2 ea **102N** White Nylon Mortise Guide
- 4 ea **TELS-14KIT** In Track Stops
- 1 ea Adjusting Wrench and Mounting Hardware

#### Standard Kit Sizes

Part Number	Track Length	Door Width
HBP200A/4	48"	2 @ 24"
HBP200A/ 5-4	64"	2 @ 32"
HBP200A/6	72"	2 @ 36"
HBP200A/7	84"	2 @ 42"
HBP200A/8	96"	2 @ 48"
HBP200A/10	120"	2 @ 60"
HBP200A/12	144"	2 @ 72"

#### Options: See page 275

Hardware Kit	<b>H200PACK</b>
Mounting Bracket	<b>2812</b>
Track	<b>2802D</b> dark bronze anodized track
Track Stop (bumper)	<b>287HD</b>
Bottom Channel	<b>94A</b>
Fascia, Snap-On	<b>F134C</b> clear anodized aluminum fascia. <b>F134D</b> dark bronze anodized aluminum fascia
Roller Guide	<b>106R/94</b>
Dual Guide Channel	<b>2802BT</b>
Polypropylene Guide Rail	<b>EPD3BL</b> for use with 102N

AVAILABLE FINISHES FOR PRODUCTS SHOWN ON THIS PAGE (see General Information section for finish chart)  
A (Mill Finish Aluminum) C (Clear Anodized)

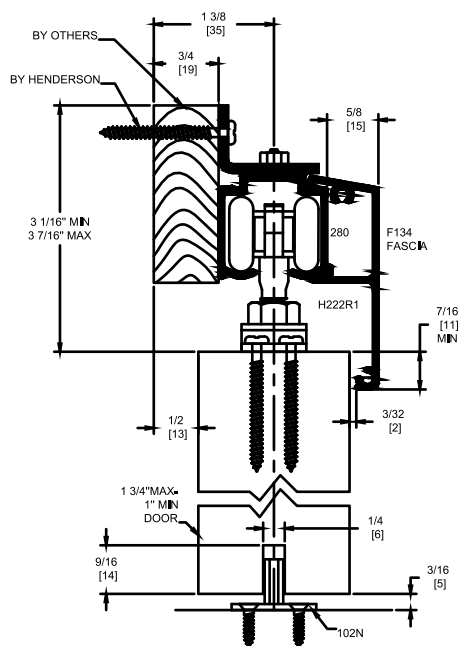
## SIM200A Series

For Sliding Doors up to 48" wide and 200 lbs.

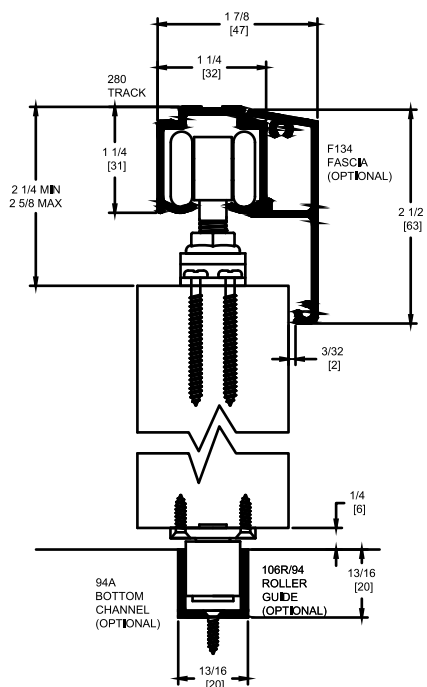
Manufactured by P.C. Henderson

HENDERSON

### Side Wall Mount



### Overhead Mount



Simultaneous Action Unit (SIM) allows the simultaneous operation of two doors.

#### Configurations:

- Bi-parting

#### Installations:

- Overhead Mount
- Side Wall Mount

#### Features:

- Allows individual bi-part doors to act as a single operating unit. When one door is opened or closed, the second door operates simultaneously
- 200 lb. panel capacity
- Hanger body is made of nickel plated zinc alloy for durability and long life
- Zinc alloy ball bearing wheels coated in nylon for smooth operation
- Clear anodized aluminum track 280C
- 2 year warranty

### SIM200A Kits Include:

- 1 ea **280C** Clear Anodized Aluminum Track
- 4 ea **H222R1** Hangers
- 4 ea **601H** Nylon In-Track Clip Stop
- 2 ea **102N** White Nylon Mortise Guide
- 1 ea **SIM100** Cable and Pulley Kit

#### Standard Kit Sizes

Part Number	Material	Track Length	Door Width
SIM200A/6	Aluminum	72"	2 @ 18"
SIM200A/8	Aluminum	96"	2 @ 24"
SIM200A/12	Aluminum	2 @ 72"	2 @ 36"
SIM200A/16	Aluminum	2 @ 96"	2 @ 48"

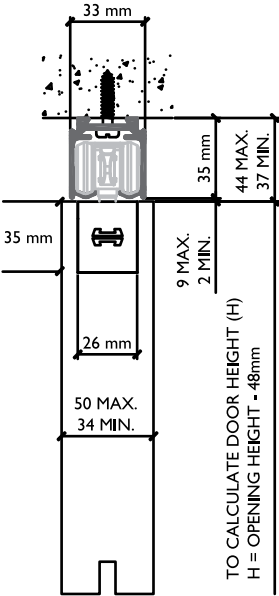
#### Options: See page 275

- Fascia
  - F134C** clear anodized aluminum fascia
  - F134D** dark bronze anodized fascia
  - 280D** dark bronze anodized
- Side Wall Track Brackets
  - 281** available as 5 pack only, **2815**
  - NOTE: Need one at each end and no more than 3 feet in between. Fasteners included.
- End Plates
  - K134EP** (use with F134C only)
  - K134DEP** (use with F134D only)
- Bottom Channel
  - 94A**
- Roller Guide
  - 106R/94**
- Threshold
  - 971A**
- Side Wall Mortise Guides
  - 102WN** (nylon) and **102WA** (steel)
- Polypropylene Guide Rail
  - EPD3BL** for use with 102N or 102WN

# LP200 Series

For Sliding Panels up to 200 lbs.  
Manufactured by P.C. Henderson

HENDERSON



Low profile design for use where space is limited.

**Configurations:**

- Single
- Bi-parting

**Installations:**

- Overhead Mount
- Side Wall Mount

**Features:**

- Used to maximize door height
- Designed to give a modern clean finish with all parts concealed. Ideal for applications where minimal clearance between track and door is required
- Easy installation and adjustment
- 200 lb. panel capacity
- Needle bearing nylon wheels for smooth operation
- Clear anodized aluminum track 280C
- 2 year warranty

**LP200A Kits Include:**

- 1 ea **280C** Clear Anodized Aluminum Track
- 1 ea **LH100** Hardware Kit

**LH100 Hardware Kits Include:**

- 2 ea Low Head Room Units
- 2 ea End Caps
- 2 ea In-Track Clip Stops
- 1 ea Screw Pack
- 2 ea Low Head Room Hangers
- 1 ea **102N** White Nylon Mortise Guide
- 1 ea Small Spanner and 4mm Allen Key

Standard Kit Sizes			
Part Number	Material	Track Length	Door Width
LP200A/6	Aluminum	72"	36"
LP200A/8	Aluminum	96"	48"
LP200A/10	Aluminum	120"	60"

**Options:** See page 275

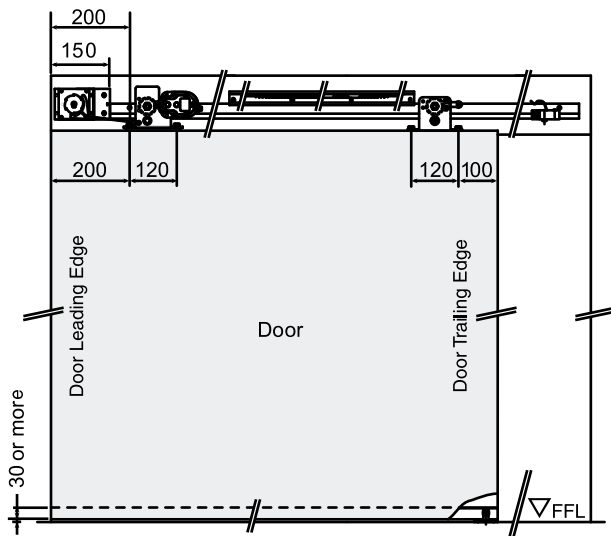
- Side Wall Track Bracket **281** available as 5 pack only, **2815**  
Note: Need one at each end and no more than 3 feet in between. Fasteners included.
- Bottom Channel **94A**
- Roller Guide **106R/94**
- Threshold **971A**

## Sirocco Series

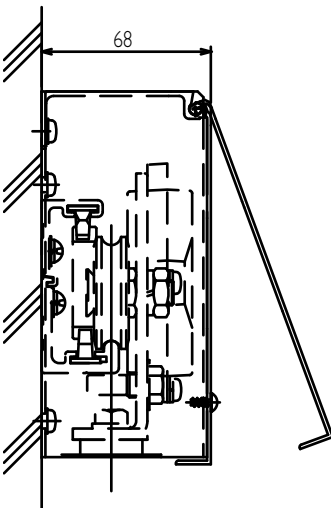
For Sliding Panels up to 200 lbs.

Manufactured by P.C. Henderson

HENDERSON



Right Hand SIRRH Shown Above and Below



The Sirocco system is a quiet, user friendly, self closing system which brings the door gently to a close.

The integrated hydraulic soft stop brings the door to a safe and cushioned close making it ideal for disabled access systems or public areas. The internal door brake can also be adjusted to allow the user to dictate the speed of opening preventing damage to the door and system.

### Configurations:

- Single

### Installations:

- Side Wall Mount

### Features:

- Self closing system for a single door from 31 $\frac{1}{2}$ " to 47 $\frac{1}{4}$ " wide and up to 200 lbs.
- Interior applications only
- Comes complete with a hydraulically controlled soft close feature
- Adjustable closing speed
- Door brake to reduce opening speed to prevent damage to the door and system
- Optional hold open unit giving adjustable time delay before self closing
- Operational between temperature ranges of 50 to 104 degrees Fahrenheit
- 2 year warranty

## Sirocco Series Kits Include:

- 1 ea Track 86.61" long
- 1 ea Leading hanger
- 1 ea Trailing hanger
- 1 ea Hydraulic Control Unit
- 1 ea Closing brake rack
- 1 ea Opening brake rack
- 1 ea Power spring mounting bracket
- 7 ea Height adjustment plates
- 1 ea Power spring unit
- 1 ea Guide roller
- 1 ea Opening door stop
- 1 ea Door stop roller
- 1 ea Closing door stop
- 2 ea Wooden door plate (and all required screws and bolts)

### Standard Kits

Part Number	Description
SIRRH	Right Hand Opening Kit
SIRLH	Left Hand Opening Kit

### Options:

SIRF/2500

98" Fascia

DELRH

Delayed Closing Timer Right Hand

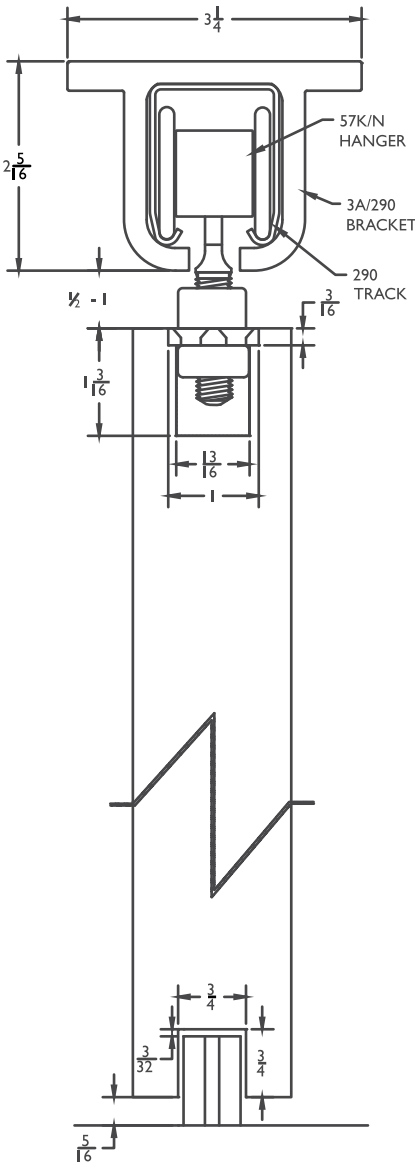
DELLH

Delayed Closing Timer Left Hand

# H300S-OH Series

For Sliding Panels up to 300 lbs.  
Manufactured by P.C. Henderson

HENDERSON



**Configurations:**

- Single
- Bi-parting

**Installations:**

- Overhead Mount

**Features:**

- Overhead mount system
- Nylon wheels for smooth operation
- 300 lb. panel capacity
- Galvanized steel track 290
- 2 year warranty

**H300S-OH Kits Include:**

- 1 ea **290** Galvanized Steel Track
- **3A/290** Aluminum Alloy Overhead Mount Track Brackets  
(One at each end and no more than 3 feet in between)
- 2 ea **1A/290/EC** Aluminum Alloy End Caps
- 2 ea **57K/N** White Nylon Body and Wheels, Zinc Coated Steel Pendant Bolt Hangers
- 2 ea **HH3/290** Galvanized Steel In-Track Stop
- 1 ea **89/2N** Gray Nylon Mortise Guide

Standard Kit Sizes			
Part Number	Material	Track Length	Door Width
H300S-OH/6	Steel	72"	36"
H300S-OH/8	Steel	96"	48"
H300S-OH/10	Steel	120"	60"
H300S-OH/12	Steel	144"	72"

**Options:** See page 275

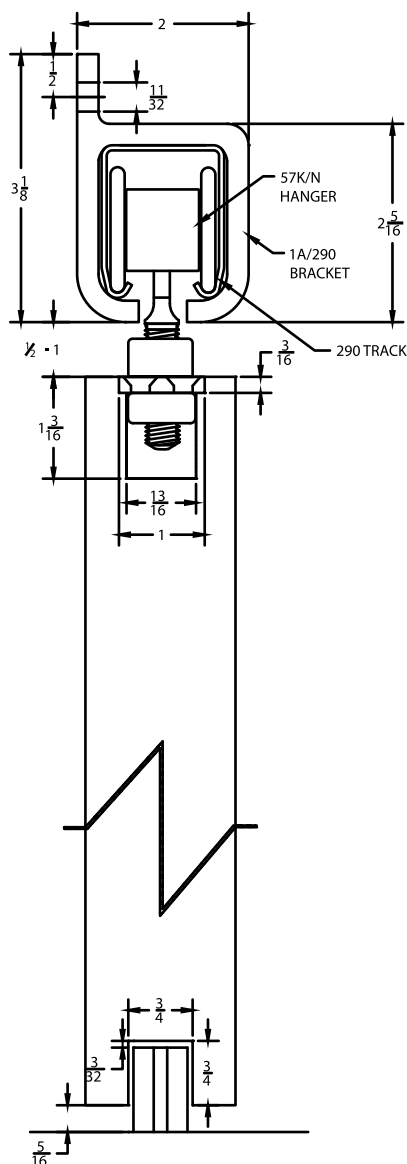
Bottom Channel	<b>94A</b>
Roller Guide	<b>106R/94</b>
Threshold	<b>971A</b>
Joining Bracket	<b>3AX/290</b>
Mortise Guides	<b>102N</b>



## H300S-SW Series

For Sliding Panels up to 300 lbs.  
Manufactured by P.C. Henderson

HENDERSON



### Configurations:

- Single
- Bi-parting

### Installations:

- Side Wall Mount

### Features:

- Side wall mount system
- Nylon wheels for smooth operation
- 300 lb. panel capacity
- Galvanized steel track 290
- 2 year warranty

### H300S-SW Kits Include:

- 1 ea **290** Galvanized Steel Track
- **1A/290** Side Wall Mount Track Brackets  
(One at each end and no more than three feet in between)
- 2 ea **1A/290/EC** Aluminum Alloy End Caps
- 2 ea **57K/N** White Nylon Body and Wheels, Zinc Coated Steel Pendant Bolt Hangers
- 2 ea **HH3/290** Galvanized Steel In-Track Stops
- 1 ea **89/2N** Gray Nylon Mortise Guide

### Standard Kit Sizes

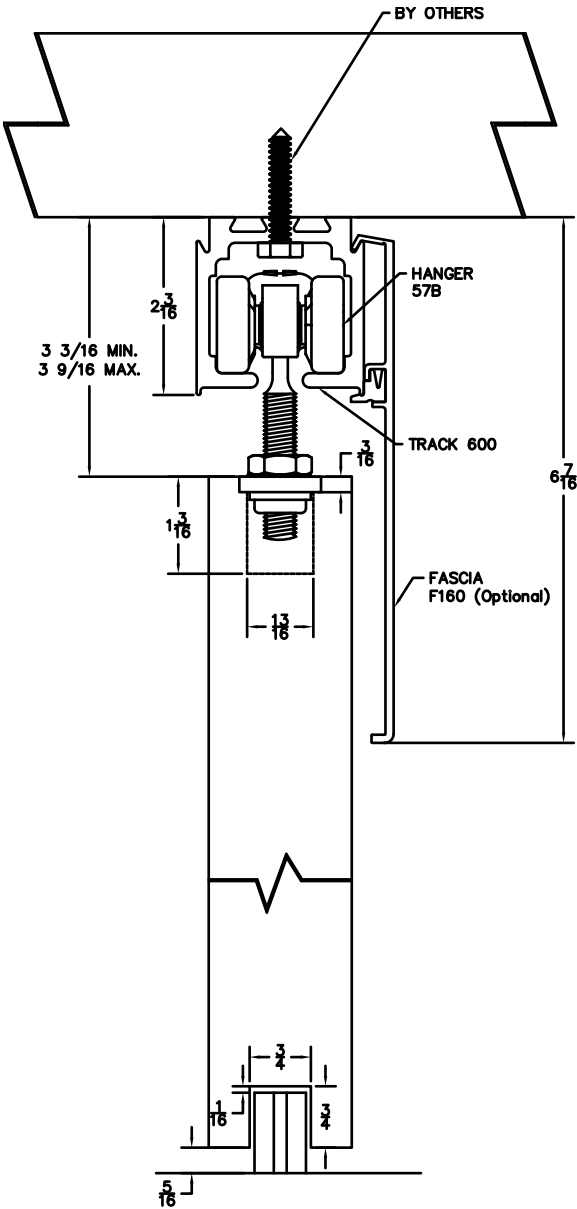
Part Number	Material	Track Length	Door Width
H300S-SW/6	Steel	72"	36"
H300S-SW/8	Steel	96"	48"
H300S-SW/10	Steel	120"	60"
H300S-SW/12	Steel	144"	72"

### Options: See page 275

- Bottom Channel **94A**
- Roller Guide **106R/94**
- Mortise Guides **102N**
- Side Wall Mortise Guides **102WN** (nylon) and **102WA** (steel)
- Joining Bracket **1AX/290**

# H440A-OH Series

For Sliding Panels up to 440 lbs.  
Manufactured by P.C. Henderson  
**HENDERSON**



**Configurations:**

- Single
- Bi-parting

**Installations:**

- Overhead Mount

**Features:**

- Overhead mount system
- Nylon body and steel ball bearing nylon wheels for smooth operation
- 440 lb. panel capacity
- Mill finished aluminum track 600A
- 2 year warranty

## H440A-OH Kits Include:

- 1 ea **600A** Mill Finished Aluminum Track
- 2 ea **57B** Hangers: Gray Nylon Body, Zinc Coated Steel Pendant Bolt, Steel Ball Bearing Nylon Wheels
- 2 ea **601P** Nylon In-Track Clip Stop
- 1 ea **89/2N** Gray Nylon Mortise Guide

Standard Kit Sizes			
Part Number	Material	Track Length	Door Width
H440A-OH/6	Aluminum	72"	36"
H440A-OH/8	Aluminum	96"	48"
H440A-OH/10	Aluminum	120"	60"
H440A-OH/12	Aluminum	144"	72"

**Options:** See page 275

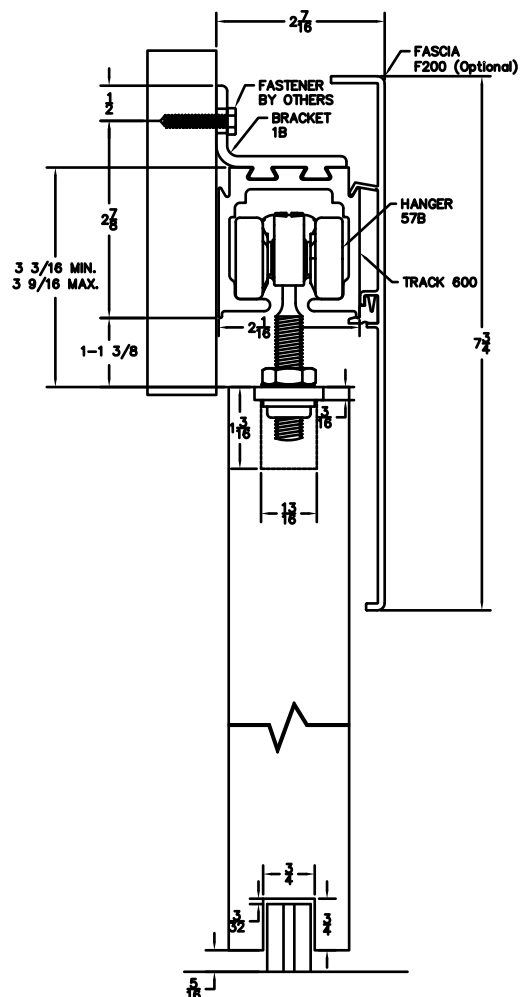
- |                |   |
|----------------|---|
| Fascia         | <b>F160C</b>  |
| Bottom Channel | <b>94A</b>  |
| Roller Guide   | <b>106R/94</b>  |
| Threshold      | <b>971A</b>   |
| Mortise Guides | <b>102N</b>   |
| End Plate Kit  | <b>F160ECP</b> (used with <b>F160C</b> fascia and <b>600A</b> track only) |

## H440A-SW Series

For Sliding Panels up to 440 lbs.

Manufactured by P.C. Henderson

HENDERSON



### Configurations:

- Single
- Bi-parting

### Installations:

- Side Wall Mount

### Features:

- Side wall mount system
- Nylon body and steel ball bearing nylon wheels for smooth operation
- 440 lb. panel capacity
- Mill finished aluminum track 600A
- 2 year warranty

### H440A-SW Kits Include:

- 1 ea **600A** Mill Finished Aluminum Track
- **1B** Side Wall Mount Track Brackets  
(One at each end and no more than 3 feet in between)
- 2 ea **57B** Hangers: Gray Nylon Body, Zinc Coated Steel Pendant Bolt, Steel Ball Bearing Nylon Wheels
- 2 ea **601P** Nylon In-Track Clip Stop
- 1 ea **89/2N** Gray Nylon Mortise Guide

### Standard Kit Sizes

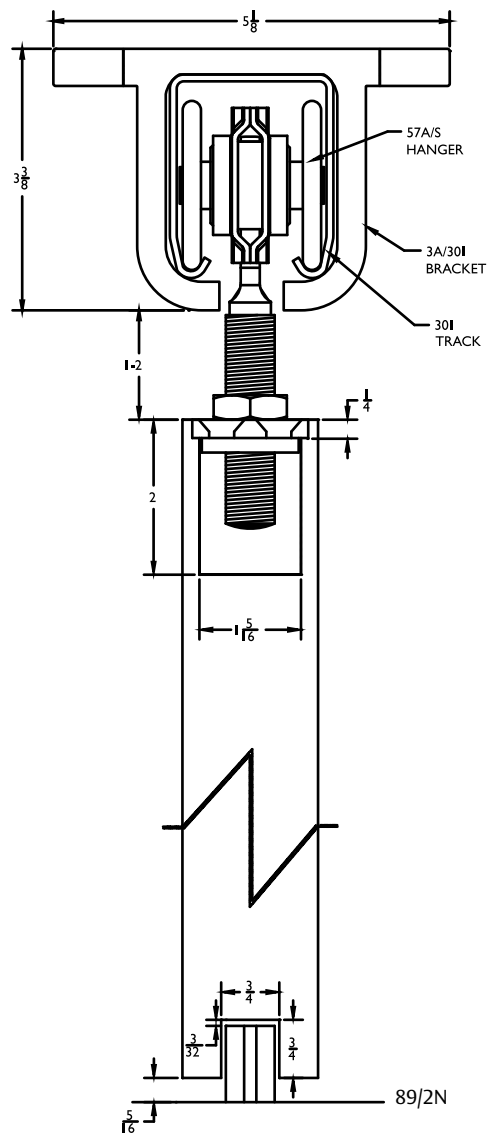
Part Number	Material	Track Length	Door Width
H440A-SW/6	Aluminum	72"	36"
H440A-SW/8	Aluminum	96"	48"
H440A-SW/10	Aluminum	120"	60"
H440A-SW/12	Aluminum	144"	72"

### Options: See page 275

Fascia	<b>F200C</b>
Bottom Channel	<b>94A</b>
Roller Guide	<b>106R/94</b>
Mortise Guides	<b>102N</b>
Side Wall Mortise Guides	<b>102WN</b> (nylon) and <b>102WA</b> (steel)
End Plate Kit	<b>F200ECP</b> (used with <b>F200C</b> fascia and <b>600A</b> track only)
Joining Bracket	<b>1BX</b>

# H600S-OH Series

For Sliding Panels up to 600 lbs.  
Manufactured by P.C. Henderson  
**HENDERSON**



**Configurations:**

- Single
- Bi-parting

**Installations:**

- Overhead Mount

**Features:**

- Overhead mount system
- Heavy duty zinc coated steel
- Ball bearing wheels
- 600 lb. panel capacity
- Galvanized steel track 301
- 2 year warranty

**H600S-OH Kits Include:**

- 1 ea **301** Galvanized Steel Track
- **3A/301** Aluminum Alloy Overhead Mount Track Brackets  
(One at each end and no more than three feet in between)
- 2 ea **1A/301/EC** Aluminum Alloy End Caps
- 2 ea **57A/S** Zinc Coated Steel Body, Wheels, and Pendant Bolt Hangers
- 2 ea **HH3/301** Galvanized Steel In-Track Stops
- 1 ea **89/2N** Gray Nylon Mortise Guide

Standard Kit Sizes			
Part Number	Material	Track Length	Door Width
H600S-OH/6	Steel	72"	36"
H600S-OH/8	Steel	96"	48"
H600S-OH/10	Steel	120"	60"
H600S-OH/12	Steel	144"	72"

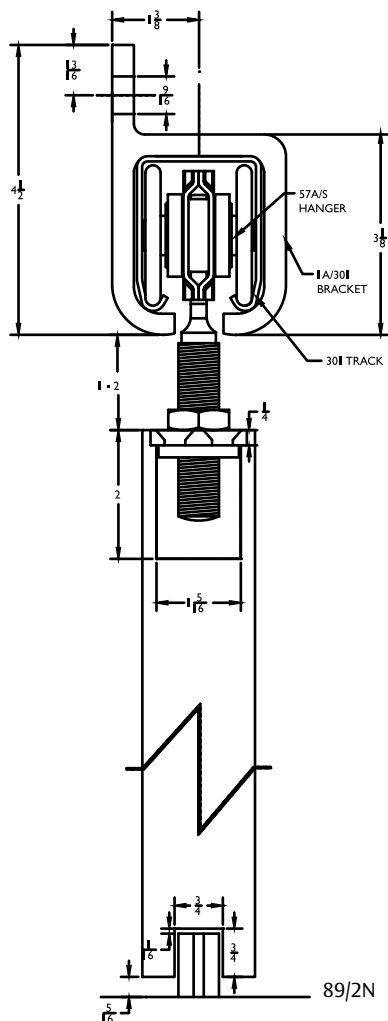
**Options:** See page 275

- Bottom Channel **94A**
- Roller Guide **106R/94**
- Mortise Guides **102N**
- Threshold **971A**
- Joining Bracket **3AX/301**

## H600S-SW Series

For Sliding Panels up to 600 lbs.  
Manufactured by P.C. Henderson

HENDERSON



### Configurations:

- Single
- Bi-parting

### Installations:

- Side Wall Mount

### Features:

- Side wall mount system
- Heavy duty zinc coated steel
- Ball bearing wheels
- 600 lb. panel capacity
- Galvanized steel track 301
- 2 year warranty

### H600S-SW Kits Include:

- 1 ea **301** Galvanized Steel Track
- **1A/301** Side Wall Mount Track Brackets  
(One at each end and no more than three feet in between)
- 2 ea **1A/301/EC** Aluminum Alloy End Caps
- 2 ea **57A/S** Zinc Coated Steel Body, Wheels, and Pendant Bolt Hangers
- 2 ea **HH3/301** Galvanized Steel In-Track Stops
- 1 ea **89/2N** Gray Nylon Mortise Guide

### Standard Kit Sizes

Part Number	Material	Track Length	Door Width
H600S-SW/6	Steel	72"	36"
H600S-SW/8	Steel	96"	48"
H600S-SW/10	Steel	120"	60"
H600S-SW/12	Steel	144"	72"

### Options: See page 275

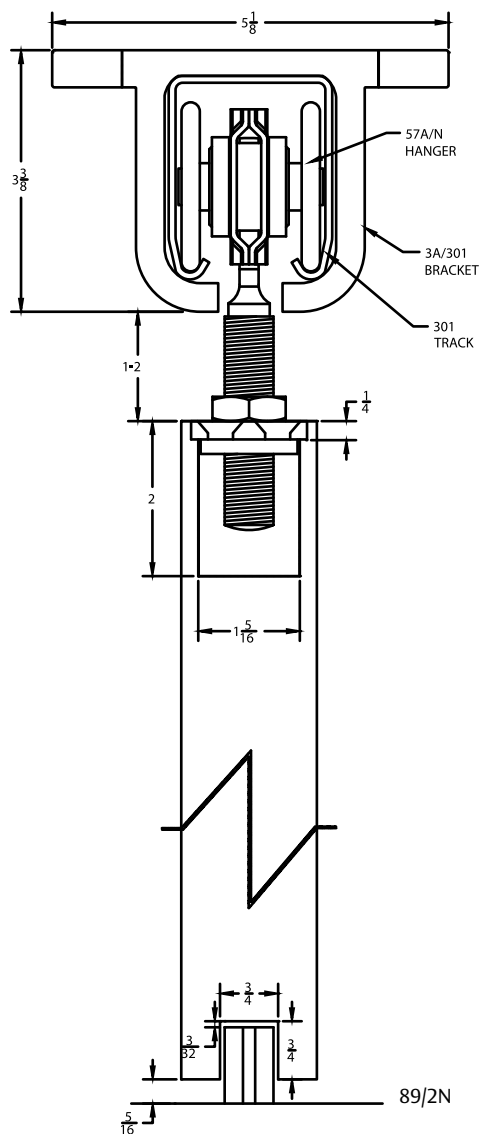
- Bottom Channel **94A**
- Roller Guide **106R/94**
- Mortise Guides **102N**
- Side Wall Mortise Guides **102WN**
- Joining Bracket **1AX/301**

## H800S-OH Series

For Sliding Panels up to 800 lbs.

Manufactured by P.C. Henderson

HENDERSON



### Configurations:

- Single
- Bi-parting

### Installations:

- Overhead Mount

### Features:

- Overhead mount system
- Heavy duty zinc coated steel body
- Ball bearing nylon wheels for smooth operation
- 800 lb. panel capacity
- Galvanized steel track 301
- 2 year warranty

### H800S-OH Kits Include:

- 1 ea **301** Galvanized Steel Track
- **3A/301** Overhead Mount Track Brackets  
(One at each end and no more than three feet in between)
- 2 ea **1A/301/EC** Aluminum Alloy End Caps
- 2 ea **57A/N** Zinc Coated Steel Body, Nylon Wheels, and Pendant Bolt Hangers
- 2 ea **HH3/301** Galvanized Steel In-Track Stop
- 1 ea **89/2N** Gray Nylon Mortise Guide

### Standard Kit Sizes

Part Number	Material	Track Length	Door Width
H800S-OH/6	Steel	72"	36"
H800S-OH/8	Steel	96"	48"
H800S-OH/10	Steel	120"	60"
H800S-OH/12	Steel	144"	72"

**Options:** See page 275

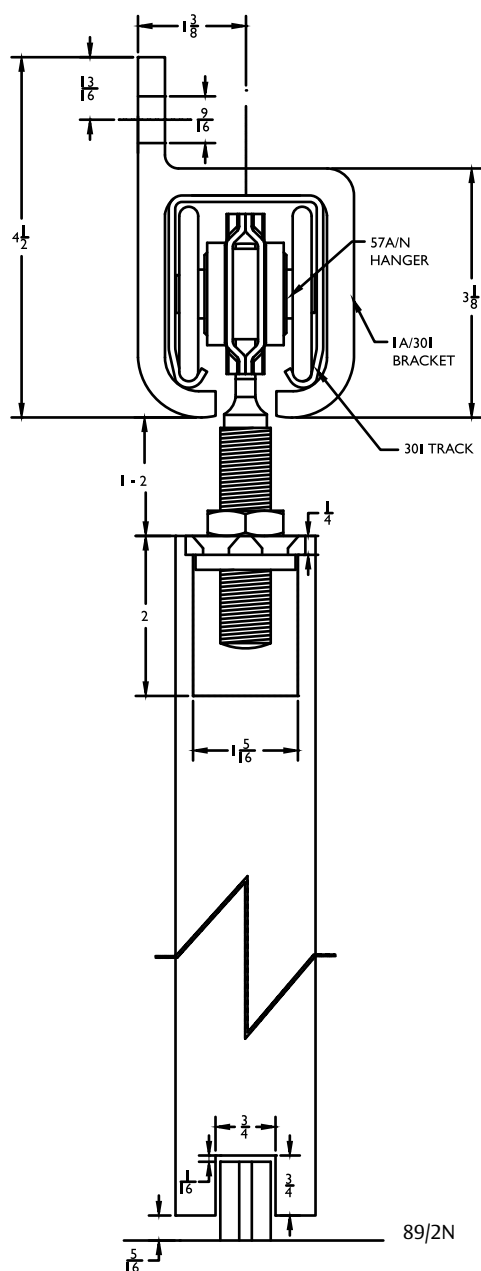
- Bottom Channel **94A**
- Roller Guide **106R/94**
- Mortise Guides **102N**
- Threshold **971A**
- Joining Bracket **3AX/301**

## H800S-SW Series

**For Sliding Panels up to 800 lbs.**

Manufactured by P.C. Henderson

HENDERSON



### Configurations:

- Single
- Bi-parting

### Installations:

- Side Wall Mount

### Features:

- Side wall mount system
- Heavy duty zinc coated steel body
- Heavy ball bearing nylon wheels for smooth operation
- 800 lb. panel capacity
- Galvanized steel track 301
- 2 year warranty

### H800S-SW Kits Include:

- 1 ea **301** Galvanized Steel Track
- **1A/301** Aluminum Alloy Side Wall Mount Track Brackets  
(One at each end and no more than three feet in between)
- 2 ea **1A/301/EC** Aluminum Alloy End Caps
- 2 ea **57A/N** Zinc Coated Steel Body, Nylon Wheels, and  
Pendant Bolt Hangers
- 2 ea **HH3/301** Galvanized Steel In-Track Stops
- 1 ea **89/2N** Gray Nylon Mortise Guide

## Standard Kit Sizes

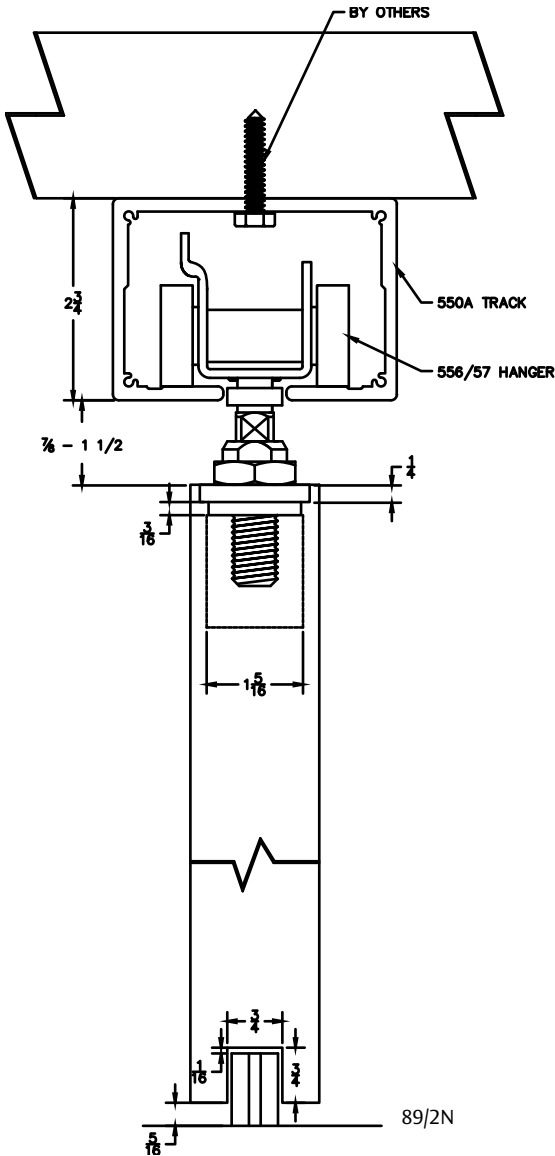
Part Number	Material	Track Length	Door Width
H800S-SW/6	Steel	72"	36"
H800S-SW/8	Steel	96"	48"
H800S-SW/10	Steel	120"	60"
H800S-SW/12	Steel	144"	72"

**Options:** See page 275

Bottom Channel	<b>94A</b>
Roller Guide	<b>106R/94</b>
Mortise Guides	<b>102N</b>
Side Wall Mortise Guides	<b>102WN</b> (nylon) and <b>102WA</b> (steel)
Joining Bracket	<b>1AX/301</b>

# H1100A-OH Series

For Sliding Panels up to 1100 lbs.  
 Manufactured by P.C. Henderson  
**HENDERSON**



**Ideally suited for large doors that require high performance and an attractive finish.**

Typical applications are hotels, conference centers, shop-fronts and showrooms.

**Configurations:**

- Single
- Bi-parting

**Installations:**

- Overhead Mount

**Features:**

- For top hung wood and metal doors
- Heavy duty black painted steel body
- Ball bearing steel wheels
- 1100 lb. panel capacity
- Mill finished aluminum track 550A
- 2 year warranty

## H1100A-OH Kits Include:

- 1 ea **550A** Mill Finished Aluminum Track
- 2 ea **556/57** Painted Black Steel Body - Zinc Coated Steel Wheels and Pendant Bolt Hangers
- 2 ea **HH3/301** Galvanized Steel In-Track Stops
- 1 ea **89/2N** Gray Nylon Mortise Guide

Standard Kit Sizes			
Part Number	Material	Track Length	Door Width
H1100A-OH/6	Aluminum	72"	36"
H1100A-OH/8	Aluminum	96"	48"
H1100A-OH/10	Aluminum	120"	60"
H1100A-OH/12	Aluminum	144"	72"
H1100A-OH/16	Aluminum	197"	98"

**Options:** See page 275

- Bottom Channel **94A**
- Roller Guide **106R/94**
- Threshold **971A**

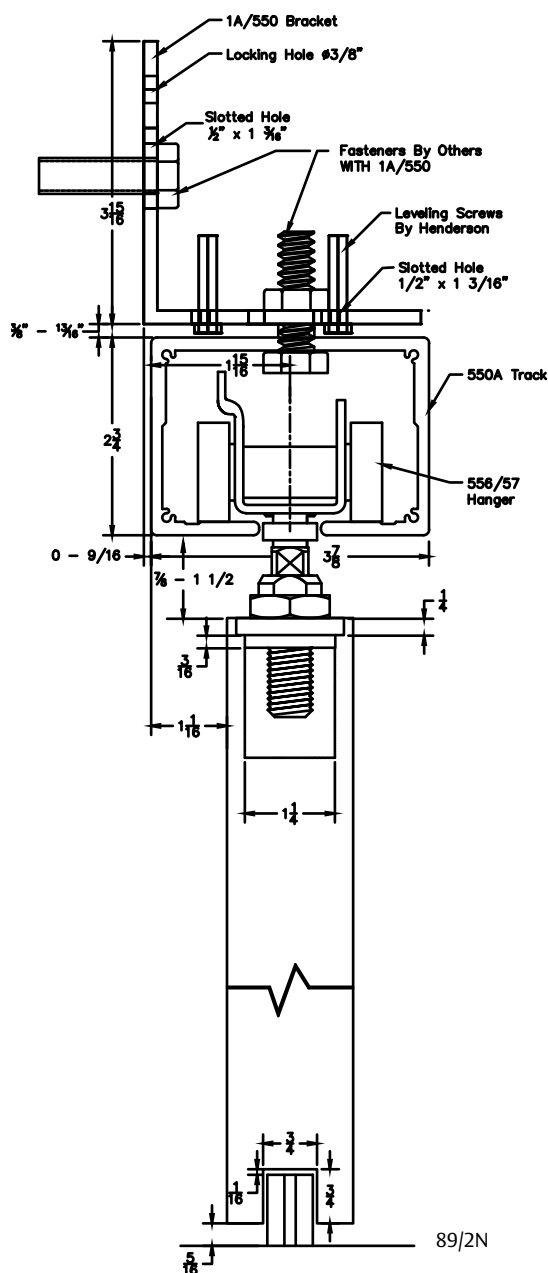


## H1100A-SW Series

**For Sliding Panels up to 1100 lbs.**

Manufactured by P.C. Henderson

HENDERSON



**Ideally suited for large doors that require high performance and an attractive finish.**

Typical applications are hotels, conference centers, shop-fronts and showrooms.

### Configurations:

- Single
- Bi-parting

### Installations:

- Side Wall Mount

### Features:

- Heavy duty black painted steel body ball bearing wheels
- 1100 lb. panel capacity
- Mill finished aluminum track 550A
- 2 year warranty

### H1100A-SW Kits Include:

- 1 ea **550A** Mill Finished Aluminum Track
- **1A/550** Aluminum Alloy Side Wall Track Bracket  
Fasteners not included with 1A/550. (One at each end and no more than three feet in between)
- 2 ea **556/57** Painted Black Steel Body - Zinc Coated Steel Wheels and Pendant Bolt Hangers
- 2 ea **HH3/301** Galvanized Steel In-Track Stops
- 1 ea **89/2N** Gray Nylon Mortise Guide

Standard Kit Sizes			
Part Number	Material	Track Length	Door Width
H1100A-SW/6	Aluminum	72"	36"
H1100A-SW/8	Aluminum	96"	48"
H1100A-SW/10	Aluminum	120"	60"
H1100A-SW/12	Aluminum	144"	72"
H1100A-SW/16	Aluminum	197"	98"

**Options:** See page 275

Bottom Channel

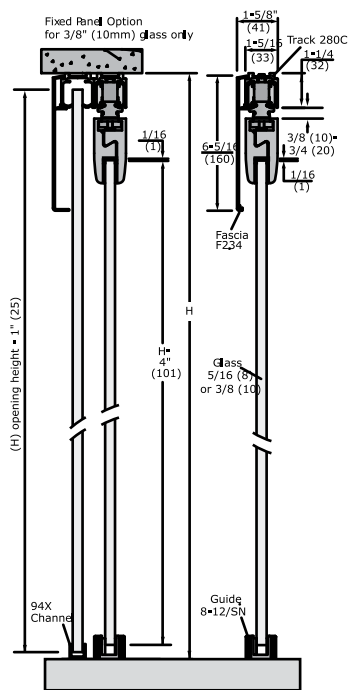
94A

### Roller Guide

106R/94

# Husky Sliding Glass Series

Manufactured by P.C. Henderson **HENDERSON**



For lightweight glass applications such as office doors and small glass partitions.

- 2 year warranty

## Capacity:

Max. door weight 165 lbs. (75kg)  
Max. door height 7' 10" (2400mm)  
Max. door width 4' 1" (1250mm)  
Glass thickness 5/16" (8mm) & 3/8" (10mm)

## Door Types:

Glass panels of 5/16" (8mm) or 3/8" (10mm) thickness in tempered or laminated glass.

## 8/HY/75 and 10/HY/75 HUSKY Glass Clamp Kit:

8/HY/75 is for 8mm or 5/16" thick glass

10/HY/75 kit is for 10mm or 3/8" thick glass

- 2 ea **284D** Hangers
- 2 ea GLASS Clamps
- 2 ea **601H** End stops
- 1 ea **8-12/SN** adjustable guide for 5/16" or 3/8" glass guide

Standard Kit Sizes			
Part Number	Material	Track Length	Door Width
280C72	Aluminum	72"	36"
280C96	Aluminum	96"	48"
280C120	Aluminum	120"	60"
280C144	Aluminum	144"	72"

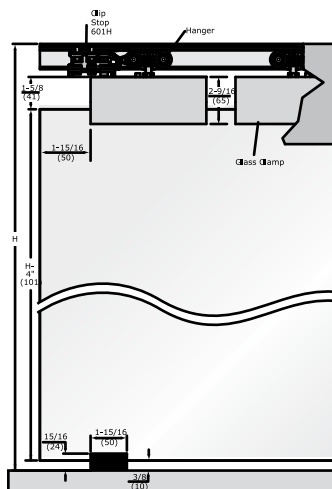
## Options: See page 275

Face mount bracket: **281** available as 5 pack only, **2815**  
NOTE: Need one on each end, with no more than 3 feet in between each bracket. Fasteners included.

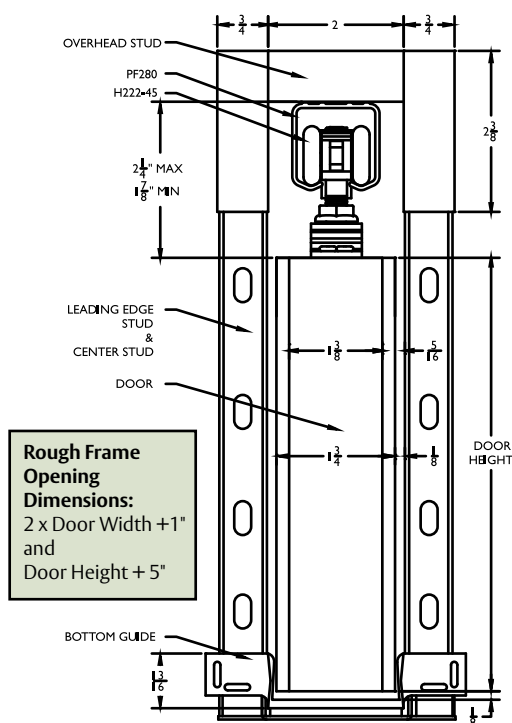
Fascias: **F234C** clear anodized aluminum fascia

Guides: **8-12/SN** adjustable guide for 5/16" or 3/8" glass guide

Accessories: **601H** retaining stop mounted within the track



# Pocket Frame Kit



## Features:

- Heavy duty hardware supports doors up to 175 lbs. each
- Standard kit is for 1<sup>3</sup>/<sub>8</sub>" door. For 1<sup>3</sup>/<sub>4</sub>" door, MUST use PF134KIT (see Options below)
- Chrome plated steel hangers are corrosion resistant and no maintenance is required
- 5 year warranty

## Pocket Frame Kit Includes:

- 1 ea Header Track Assembly
  - 4 ea **PFAS**\_ Aluminum Cased Wood Studs
  - 2 ea **PFHB-1** and **PFHB-2** Pre-Mounted Header Brackets
  - 2 ea **H222-45** Hangers
  - 2 ea **PFFC-8** Floor Cleats
  - 1 ea **PFBS** Pocket Frame Bumper Stop
  - 1 ea **PFBG-8** Pocket Frame Bottom Guide for 1<sup>3</sup>/<sub>8</sub>" Thick Doors
- Mounting Hardware

## Standard Kit Sizes

2 x 4 (3 <sup>1</sup> / <sub>2</sub> " Stud)	2 x 6 (5 <sup>1</sup> / <sub>2</sub> " Stud)	2 x 6 (6" Stud)	Net Door Size (The Kits can be trimmed in field)
PF28200A6080	PF28200A6080-2x6	PF28200A6080-SP6	2'6" x 6'8"
PF28200A7280	PF28200A7280-2x6	PF28200A7280-SP6	3'0" x 6'8"
PF28200A9680	PF28200A9680-2x6	PF28200A9680-SP6	4'0" x 6'8"
PF28200A6084	PF28200A6084-2x6	PF28200A6084-SP6	2'6" x 7'0"
PF28200A7284	PF28200A7284-2x6	PF28200A7284-SP6	3'0" x 7'0"
PF28200A9684	PF28200A9684-2x6	PF28200A9684-SP6	4'0" x 7'0"
PF28200A6096	PF28200A6096-2x6	PF28200A6096-SP6	2'6" x 8'0"
PF28200A7296	PF28200A7296-2x6	PF28200A7296-SP6	3'0" x 8'0"
PF28200A9696	PF28200A9696-2x6	PF28200A9696-SP6	4'0" x 8'0"

## Options:

- PF134 KIT** - Recommended for use with 1 3/4" thick doors in 2x4 constructed wall kits (3 1/2" stud)
- PFAS88** - An extra pair of 88" center studs with floor cleat for 84" tall doors, for doors over 3' wide
- PFAS100** - An extra pair of 100" center studs with floor cleat for 96" tall doors, for doors over 3' wide
- PFCDKIT** - Conversion Kit to achieve a bipart double door frame
- PFKIT-4** - Hardware Kit for Pemko Pocket Frame Kit for 1<sup>3</sup>/<sub>4</sub>" thick doors (Each contains 2-H222-45 Hangers, 1-PFBS Bumper Stop, 1- PFBG-4 Guide, 2 PFHS Header Shims, 2-PFFC-4 Floor Cleats)
- PFKIT-8** - Hardware Kit for Pemko Pocket Frame Kit for 1<sup>3</sup>/<sub>8</sub>" thick doors (Each contains 2-H222-45 Hangers, 1-PFBS Bumper Stop, 1- PFBG-8 Guide, 2-PFFC-8 Floor Cleats)

## Folding 100 Series

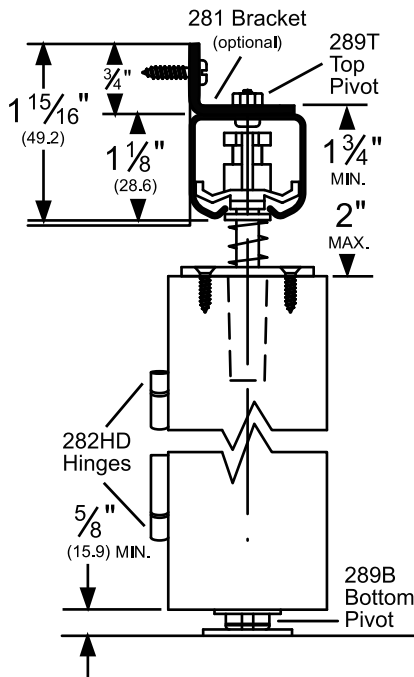
For Folding Doors

For Doors up to 24" Wide x 96" Tall

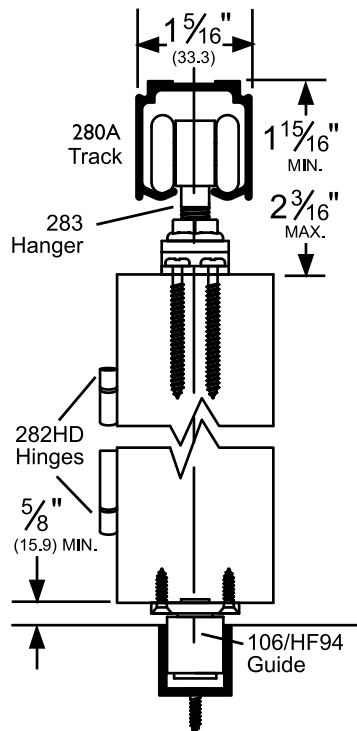
Manufactured by P.C. Henderson

**HENDERSON**

### 280 Side Wall Mounted



### 280C Overhead Mounted



#### Features:

- For medium weight folding doors
- Two and four leaf kits are available
- 2 year warranty

#### Two Panel:

#### HF2/100A Kits Include:

- 1 ea **280C** Clear Anodized Track
- 1 ea **283** Hanger
- 1 ea **289T** Top Pivot
- 1 ea **289B** Bottom Pivot
- 3 ea **282HD** Hinges
- 1 ea **106HF/94** Roller Guide
- 1 ea **94A** Aluminum Guide Channel
- 1 ea Adjusting Wrench and Mounting Hardware

#### Four Panel:

#### HF4/100A Kits Include:

- 1 ea **280C** Clear Anodized Track
- 2 ea **283** Hangers
- 2 ea **289T** Top Pivots
- 2 ea **289B** Bottom Pivots
- 6 ea **282HD** Hinges
- 2 ea **106HF/94** Roller Guide
- 1 ea **94A** Aluminum Guide Channel
- 1 ea Adjusting Wrench and Mounting Hardware

#### Standard Kit Sizes

Part Number	Material	# of Panels	Track Length
HF2/100A/2	Aluminum	2	24"
HF2/100A/2'6	Aluminum	2	30"
HF2/100A/3	Aluminum	2	36"
HF2/100A/4	Aluminum	2	48"
HF4/100A/4	Aluminum	4	48"
HF4/100A/5	Aluminum	4	60"
HF4/100A/6	Aluminum	4	72"
HF4/100A/8	Aluminum	4	96"
HF2/100/4*	Steel	2	48"
HF4/100/8*	Steel	4	96"

\*Steel kits include the same components as above, except track is 1ea 280 galvanized steel.

#### Options: See page 275

- Mounting Bracket **281** available as 5 pack only, **2815**
- Threshold **971A**
- Track **280D** dark bronze anodized aluminum

NOTE: Allow 1/4" clearance at pivot jambs and 1/8" in between hinged doors if hinges are semi mortised. Allow 3/16" between hinged doors if hinges are surface mounted. Allow 1/8" between doors meeting in the center of the opening on HF4 kits and allow 1/8" between wall and end panel on HF2 kits.

## Pacer Interior End Fold Series

**For Folding Doors and Room Dividers up to 165 lbs.**

**For Doors up to 36" Wide x 106" Tall**

Manufactured by P.C. Henderson

HENDERSON



### Features:

- For top-hung, medium weight, interior, partition doors
- Ideal in both residential and commercial applications requiring end folding doors
- 2 year warranty

### Two Panel: plan 1

PIF2/165A Kits Include:

- 1 ea    **600A** Mill Finished Aluminum Track
- 1 ea    **21B/P** Top and Bottom Pivot Assembly
- 1 ea    **21B/4** Nylon Body and Wheels, Zinc Coated Steel Pendant Bolt  
and Door Bracket Hanger
- 1 ea    **21N/94** Nylon Roller Guide on Zinc Coated Steel Door Bracket  
Bottom Guide
- 4 ea    **403/2** Aluminum Alloy Butt Hinges
- 1 ea    **94A** Aluminum Guide Channel

### Four Panel: plan 2

PIF4/165A Kits Include:

- 1 ea **600A** Mill Finished Aluminum Track
- 2 ea **21B/P** Top and Bottom Pivot Assembly
- 2 ea **21BO/4** Nylon Body and Wheels, Zinc coated steel Pendant Bolt and Door Bracket Hanger
- 2 ea **21N/94** Nylon Roller Guide on Zinc Coated Steel Door Bracket Bottom Guide
- 8 ea **403/2** Aluminum Alloy Butt Hinges
- 1 ea **94A** Aluminum Guide Channel

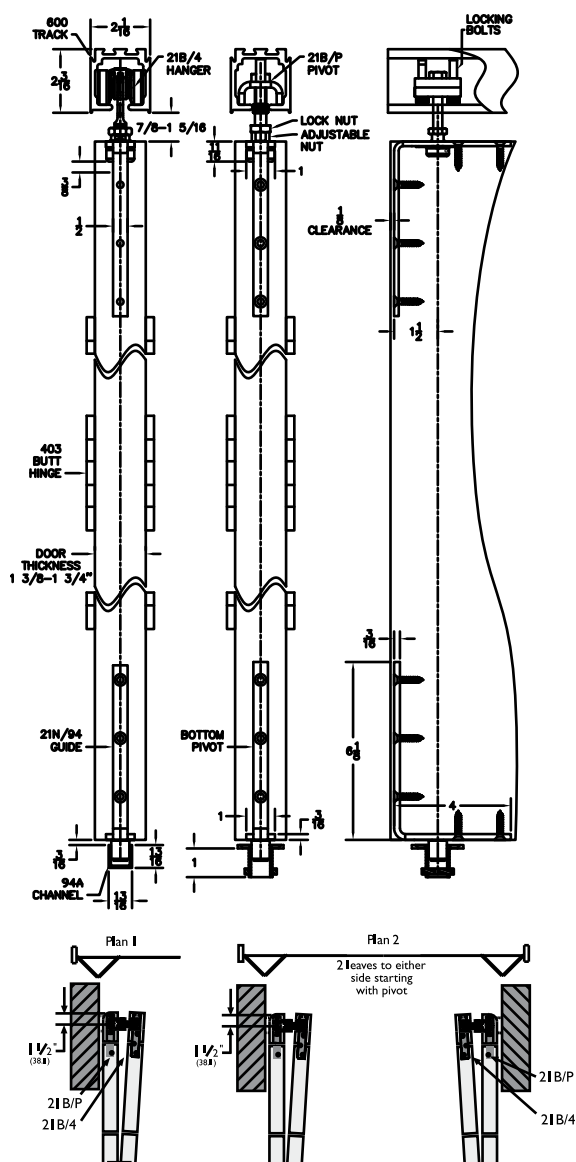
Standard Kit Sizes			
Part Number	Material	# of Panels	Track Length
PIF2/165A/6	Aluminum	2	72"
PIF4/165A/6	Aluminum	4	72"
PIF4/165A/8	Aluminum	4	96"
PIF4/165A/12	Aluminum	4	2 @ 72"

**Options:** See page 275

Threshold

971A

NOTE: Allow  $\frac{3}{8}$ " clearance at pivot jambs and  $\frac{1}{8}$ " in between hinged doors if hinges are semi mortised. Allow  $\frac{7}{16}$ " between hinged doors if hinges are surface mounted. Allow  $\frac{1}{8}$ " between doors meeting in the center of the opening on PIF4 kits and allow  $\frac{1}{8}$ " between wall and end panel on PIF2 kits.



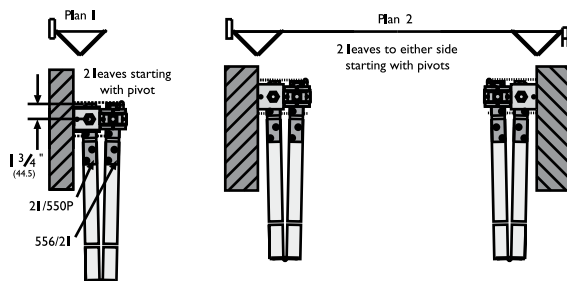
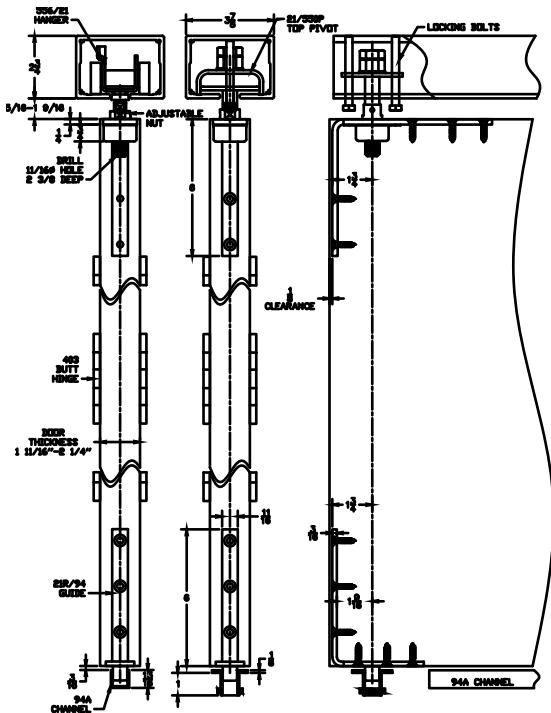
## Flexirol Interior End Fold Series

For Folding Doors and Room Dividers up to 275 lbs.

For Doors up to 48" Wide x 177" Tall

Manufactured by P.C. Henderson

HENDERSON



### Features:

- For top-hung, heavy weight, interior, partition doors.
- Specifically designed for commercial applications requiring end folding doors
- 2 year warranty.

### Two Panel: plan 1

#### FIF2/275A Kits Include:

- 1 ea 550A Mill Finished Aluminum Track
- 1 ea 21/550/P Top and Bottom Pivot Assembly
- 1 ea 556/21 Zinc Coated Steel Wheels, Pendant Bolt, Body, and Door Bracket
- 1 ea 21R/94 Bottom Guide
- 4 ea 403/2 Aluminum Alloy Butt Hinges
- 1 ea 94A Aluminum Guide Channel

### Four Panel: plan 2

#### FIF4/275A Kits Include:

- 1 ea 550A Mill Finished Aluminum Track
- 2 ea 21/550/P Top and Bottom Pivot Assembly
- 2 ea 556/21 Zinc Coated Steel Wheels, Pendant Bolt, Body, and Door Bracket
- 2 ea 21R/94 Bottom Guide
- 8 ea 403/2 Aluminum Alloy Butt Hinges
- 1 ea 94A Aluminum Guide Channel

#### Standard Kit Sizes

Part Number	Material	# of Panels	Track Length
FIF2/275A/6	Aluminum	2	72"
FIF2/275A/8	Aluminum	2	96"
FIF4/275A/6	Aluminum	4	72"
FIF4/275A/8	Aluminum	4	96"
FIF4/275A/12	Aluminum	4	2 @ 72"
FIF4/275A/16	Aluminum	4	2 @ 96"

Options: See page 275

Threshold

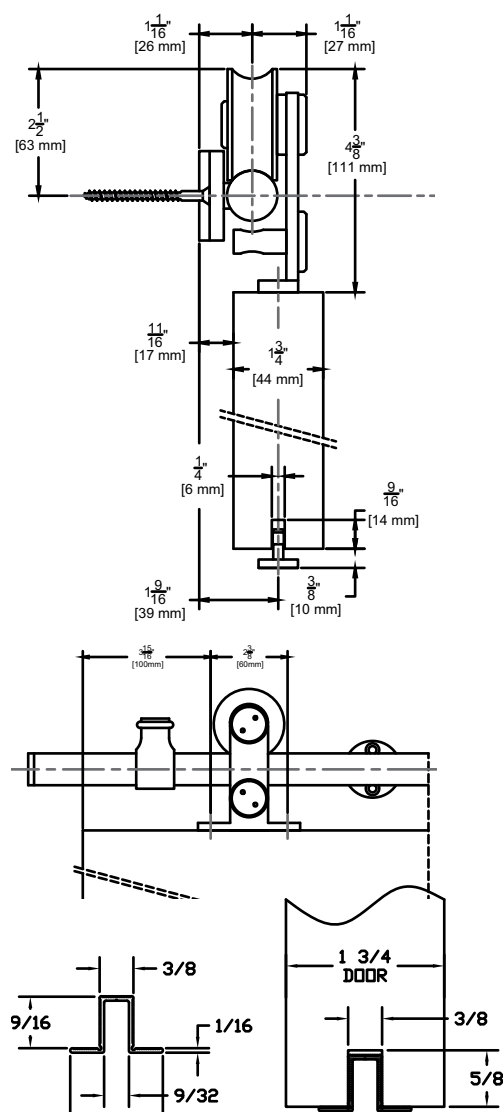
971A

NOTE: Allow  $\frac{3}{8}$ " clearance at pivot jambs and  $\frac{1}{8}$ " in between hinged doors if hinges are semi mortised. Allow  $\frac{7}{16}$ " between hinged doors if hinges are surface mounted. Allow  $\frac{1}{8}$ " between doors meeting in the center of the opening on FIF4 kits and allow  $\frac{1}{8}$ " between wall and end panel on FIF2 kits.

# Stainless Steel Sliding Track Hardware System

## W60 Series for Wood Doors

For Sliding Panels up to 176 lbs.



NOTE: Alternate route dimension when using optional EPD3BL

### Configurations:

- Single
- Bi-parting

### Installations:

- Side Wall Mount (only)

### Features:

- Made of 304 stainless steel
- Nylon coated stainless steel wheel for smooth operation
- 176 lb. panel capacity
- 5 year warranty

### Finishes:

- Brushed Stainless Steel (W60)
- Black Powder Coated Stainless Steel (W60D)
- Polished Stainless Steel (W60P)
- 10BE Satin Bronze Powder Coated Stainless Steel (W60BE)

### W60 Kits Include:

- 1 ea **BAR/\_** Stainless Steel Track
- **BRACKET2** Stainless Steel Wall Brackets
- 2 ea **62** Stainless Steel Hangers
- 1 ea **WOODGUIDE** Stainless Steel Guide
- 2 ea **STOP2** Stainless Steel Stops Mounting Hardware

NOTE: If ordering individual parts in the optional Black Powder Coat, Polished finishes or Satin Bronze be sure to include a prefix "D" for Black Powder Coat, "P" for Polished Stainless, or BE for Satin Bronze Powder Coat

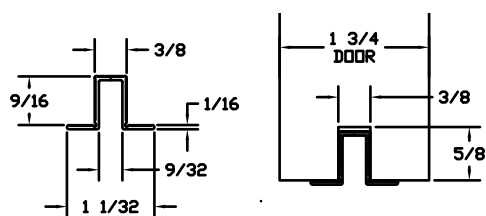
Standard Kit Sizes			
Part Number	Material	Track Length	Door Width
W60/6	304 Stainless Steel	78 <sup>3</sup> / <sub>4</sub> "	36"
W60/8	304 Stainless Steel	98 <sup>7</sup> / <sub>16</sub> "	48"
W60D/6	Black Powder Coated Stainless Steel	78 <sup>3</sup> / <sub>4</sub> "	36"
W60D/8	Black Powder Coated Stainless Steel	98 <sup>7</sup> / <sub>16</sub> "	48"
W60P/6	304 Polished Stainless Steel	78 <sup>3</sup> / <sub>4</sub> "	36"
W60P/8	304 Polished Stainless Steel	98 <sup>7</sup> / <sub>16</sub> "	48"
W60BE/6	Satin Bronze Powder Coated Stainless Steel	78 <sup>3</sup> / <sub>4</sub> "	36"
W60BE/8	Satin Bronze Powder Coated Stainless Steel	98 <sup>7</sup> / <sub>16</sub> "	48"

Custom lengths are available. Please contact the factory to order.

### Options: See page 275

- Bottom Channel **94A**
- Roller Guide **106R/94**
- Mortise Guides **102N**
- Polypropylene Guide Rail **EPD3BL** For Use With 102N
- 5/8" Spacer **BLD-SPACER-58** Pack of 5 5/8" Spacer  
Recommended for use with 5/8" Gypsum Board  
When Mounting Track Directly to Gypsum Board
- 1/2" Spacer **BLD-SPACER-12** Pack of 5 1/2" Spacer  
Recommended for use with 1/2" Gypsum Board  
When Mounting Track Directly to Gypsum Board
- 3/8" Spacer **BLD-SPACER-38** Pack of 5 3/8" Spacer  
Recommended for use with 3/8" Gypsum Board  
When Mounting Track Directly to Gypsum Board





258



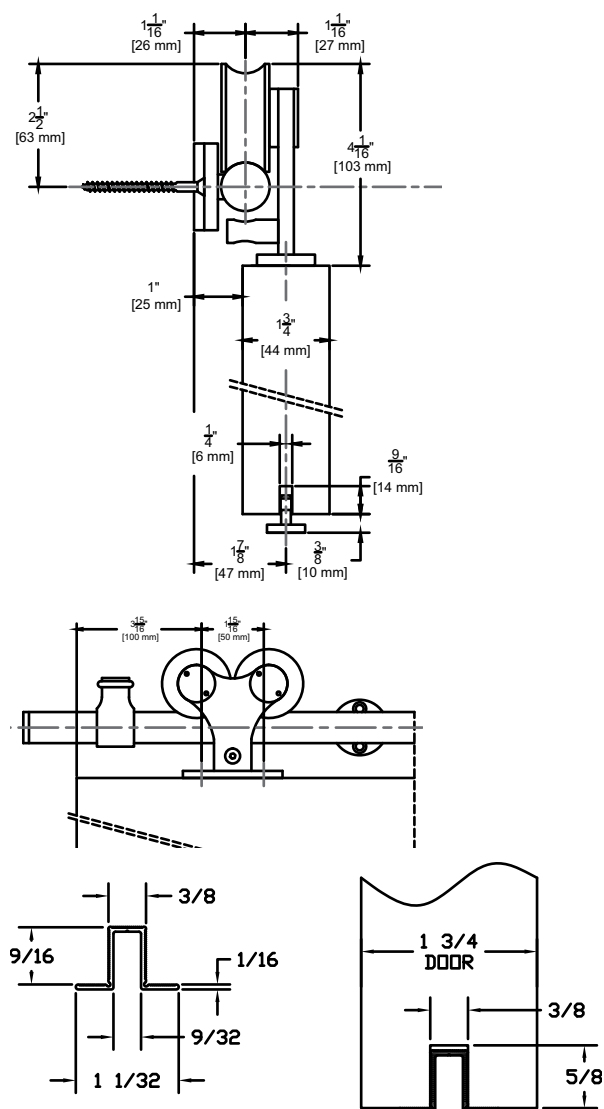
# Stainless Steel Sliding Track Hardware System

## W70 Series for Wood Doors

For Sliding Panels up to 240 lbs.



Shown with Optional Stop. Part number: STOP1



NOTE: Alternate route dimension when using optional EPD3BL

### Configurations:

- Single
- Bi-parting

### Installations:

- Side Wall Mount (only)

### Features:

- Made of 304 stainless steel
- Nylon coated stainless steel wheel for smooth operation
- 240 lb. panel capacity
- 5 year warranty

### Finishes:

- Brushed Stainless Steel (W70)
- Black Powder Coated Stainless Steel (W70D)
- Polished Stainless Steel (W70P)
- Satin Bronze Powder Coated Stainless Steel (W70BE)

### W70 Kits Include:

- 1 ea **BAR/\_** Stainless Steel Track
- **BRACKET2** Stainless Steel Wall Brackets
- 2 ea **72** Stainless Steel Hangers
- 1 ea **102SS-KIT** Stainless Steel Guide
- 2 ea **STOP2** Stainless Steel Stops Mounting Hardware

NOTE: If ordering individual parts in the optional Black Powder Coat, Polished finishes or Satin Bronze be sure to include a prefix "D" for Black Powder Coat, "P" for Polished Stainless, or BE for Satin Bronze Powder Coat

Standard Kit Sizes			
Part Number	Material	Track Length	Door Width
W70/6	304 Stainless Steel	78 <sup>3</sup> / <sub>4</sub> "	36"
W70/8	304 Stainless Steel	98 <sup>7</sup> / <sub>16</sub> "	48"
W70D/6	Black Powder Coated Stainless Steel	78 <sup>3</sup> / <sub>4</sub> "	36"
W70D/8	Black Powder Coated Stainless Steel	98 <sup>7</sup> / <sub>16</sub> "	48"
W70P/6	304 Polished Stainless Steel	78 <sup>3</sup> / <sub>4</sub> "	36"
W70P/8	304 Polished Stainless Steel	98 <sup>7</sup> / <sub>16</sub> "	48"
W70BE/6	Satin Bronze Powder Coated Stainless Steel	78 <sup>3</sup> / <sub>4</sub> "	36"
W70BE/8	Satin Bronze Powder Coated Stainless Steel	98 <sup>7</sup> / <sub>16</sub> "	48"

Custom lengths are available. Please contact the factory to order.

### Options: See page 275

Cushion Stop

**STOP1**

Mortise Guides

**102N**

Polypropylene Guide Rail

**EPD3BL** For Use With 102N

5/8" Spacer

**BLD-SPACER-58** Pack of 5 5/8" Spacer  
Recommended for use with 5/8" Gypsum Board  
When Mounting Track Directly to Gypsum Board

1/2" Spacer

**BLD-SPACER-12** Pack of 5 1/2" Spacer  
Recommended for use with 1/2" Gypsum Board  
When Mounting Track Directly to Gypsum Board

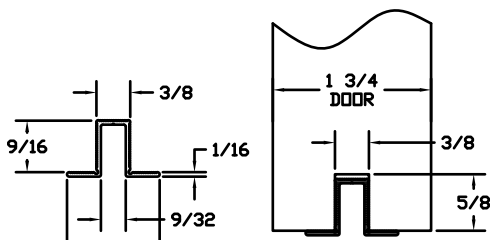
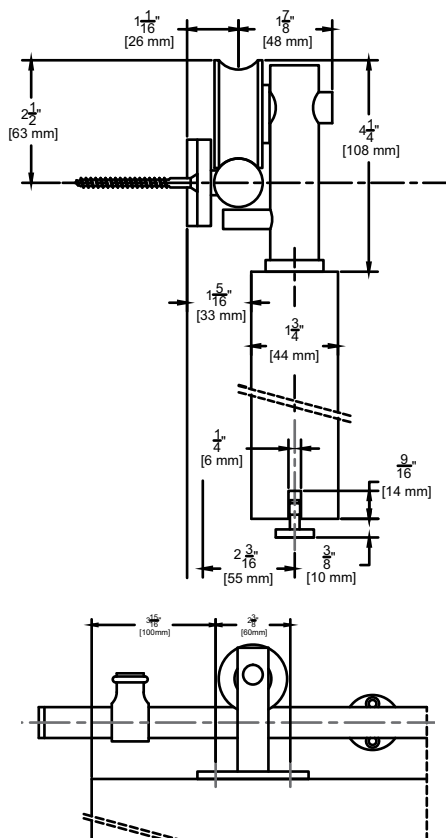
3/8" Spacer

**BLD-SPACER-38** Pack of 5 3/8" Spacer  
Recommended for use with 3/8" Gypsum Board  
When Mounting Track Directly to Gypsum Board

# Stainless Steel Sliding Track Hardware System

## W80 Series for Wood Doors

For Sliding Panels up to 176 lbs.



NOTE: Alternate route dimension when using optional EPD3BL

### Configurations:

- Single
- Bi-parting

### Features:

- Made of 304 stainless steel
- Nylon coated stainless steel wheel for smooth operation
- 176 lb. panel capacity
- 5 year warranty

### Finishes:

- Brushed Stainless Steel (W80)
- Black Powder Coated Stainless Steel (W80D)
- Polished Stainless Steel (W80P)
- Satin Bronze Powder Coated Stainless Steel (W80BE)

### W80 Kits Include:

- 1 ea **BAR/\_** Stainless Steel Track
- **BRACKET2** Stainless Steel Wall Brackets
- 2 ea **82** Stainless Steel Hangers
- 1 ea **102SS-KIT** Stainless Steel Guide
- 2 ea **STOP2** Stainless Steel Stops Mounting Hardware

NOTE: If ordering individual parts in the optional Black Powder Coat, Polished finishes or Satin Bronze be sure to include a prefix "D" for Black Powder Coat, "P" for Polished Stainless, or BE for Satin Bronze Powder Coat

Standard Kit Sizes			
Part Number	Material	Track Length	Door Width
W80/6	304 Stainless Steel	78 <sup>3</sup> / <sub>4</sub> "	36"
W80/8	304 Stainless Steel	98 <sup>7</sup> / <sub>16</sub> "	48"
W80D/6	Black Powder Coated Stainless Steel	78 <sup>3</sup> / <sub>4</sub> "	36"
W80D/8	Black Powder Coated Stainless Steel	98 <sup>7</sup> / <sub>16</sub> "	48"
W80P/6	304 Polished Stainless Steel	78 <sup>3</sup> / <sub>4</sub> "	36"
W80P/8	304 Polished Stainless Steel	98 <sup>7</sup> / <sub>16</sub> "	48"
W80BE/6	Satin Bronze Powder Coated Stainless Steel	78 <sup>3</sup> / <sub>4</sub> "	36"
W80BE/8	Satin Bronze Powder Coated Stainless Steel	98 <sup>7</sup> / <sub>16</sub> "	48"

Custom lengths are available. Please contact the factory to order.

### Options: See page 275

Bottom Channel

**94A**

Roller Guide

**106R/94**

Mortise Guides

**102N**

Polypropylene Guide Rail

**EPD3BL** For Use With 102N

5/8" Spacer

**BLD-SPACER-58** Pack of 5 5/8" Spacer  
Recommended for use with 5/8" Gypsum Board  
When Mounting Track Directly to Gypsum Board

1/2" Spacer

**BLD-SPACER-12** Pack of 5 1/2" Spacer  
Recommended for use with 1/2" Gypsum Board  
When Mounting Track Directly to Gypsum Board

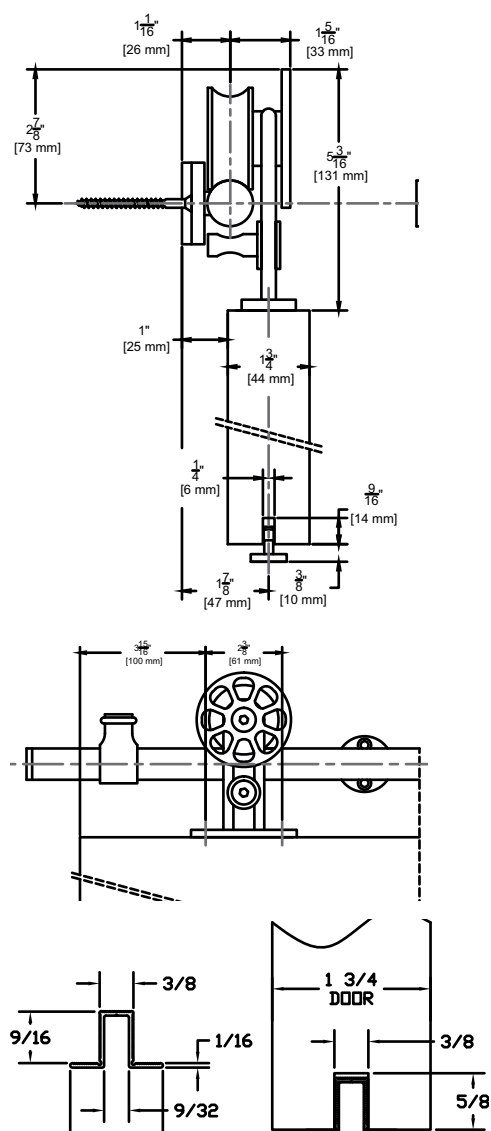
3/8" Spacer

**BLD-SPACER-38** Pack of 5 3/8" Spacer  
Recommended for use with 3/8" Gypsum Board  
When Mounting Track Directly to Gypsum Board

# Stainless Steel Sliding Track Hardware System

## W90 Series for Wood Doors

For Sliding Panels up to 176 lbs.



NOTE: Alternate route dimension when using optional EPD3BL

### Configurations:

- Single
- Bi-parting

### Installations:

- Side Wall Mount (only)

### Features:

- Made of 304 stainless steel
- Nylon coated stainless steel wheel for smooth operation
- 176 lb. panel capacity
- 5 year warranty

### Finishes:

- Brushed Stainless Steel (W90)
- Black Powder Coated Stainless Steel (W90D)
- Polished Stainless Steel (W90P)
- Satin Bronze Powder Coated Stainless Steel (W90BE)

### W90 Kits Include:

- 1 ea **BAR/\_** Stainless Steel Track
- **BRACKET2** Stainless Steel Wall Brackets
- 2 ea **92** Stainless Steel Hangers
- 1 ea **102SS-KIT** Stainless Steel Guide
- 2 ea **STOP2** Stainless Steel Stops Mounting Hardware

NOTE: If ordering individual parts in the optional Black Powder Coat, Polished finishes or Satin Bronze be sure to include a prefix "D" for Black Powder Coat, "P" for Polished Stainless, or BE for Satin Bronze Powder Coat

### Standard Kit Sizes

Part Number	Material	Track Length	Door Width
W90/6	304 Stainless Steel	78 3/4"	36"
W90/8	304 Stainless Steel	98 7/16"	48"
W90D/6	Black Powder Coated Stainless Steel	78 3/4"	36"
W90D/8	Black Powder Coated Stainless Steel	98 7/16"	48"
W90P/6	304 Polished Stainless Steel	78 3/4"	36"
W90P/8	304 Polished Stainless Steel	98 7/16"	48"
W90BE/6	Satin Bronze Powder Coated Stainless Steel	78 3/4"	36"
W90BE/8	Satin Bronze Powder Coated Stainless Steel	98 7/16"	48"

Custom lengths are available. Please contact the factory to order.

### Options: See page 275

Bottom Channel

**94A**

Roller Guide

**106R/94**

Mortise Guides

**102N**

Polypropylene Guide Rail

**EPD3BL** For Use With 102N

5/8" Spacer

**BLD-SPACER-58** Pack of 5 5/8" Spacer  
Recommended for use with 5/8" Gypsum Board  
When Mounting Track Directly to Gypsum Board

1/2" Spacer

**BLD-SPACER-12** Pack of 5 1/2" Spacer  
Recommended for use with 1/2" Gypsum Board  
When Mounting Track Directly to Gypsum Board

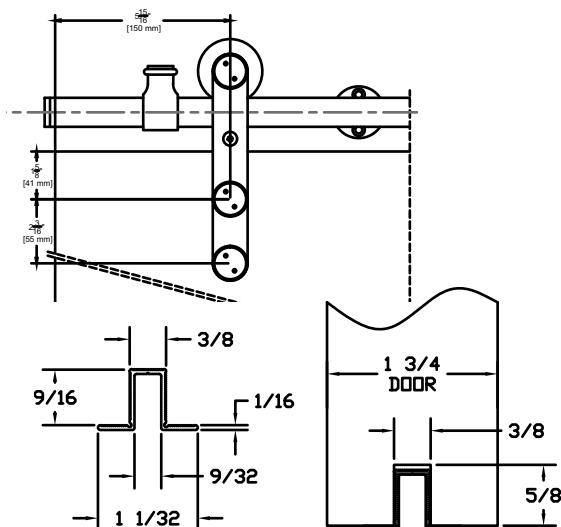
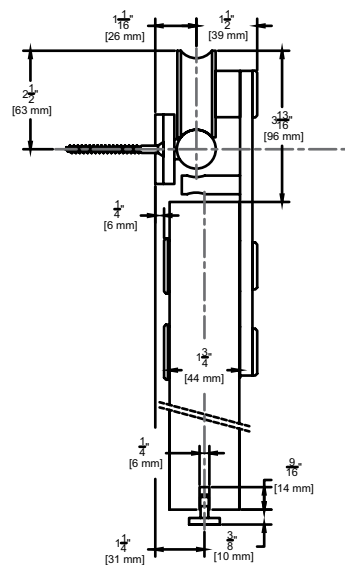
3/8" Spacer

**BLD-SPACER-38** Pack of 5 3/8" Spacer  
Recommended for use with 3/8" Gypsum Board  
When Mounting Track Directly to Gypsum Board

# Stainless Steel Sliding Track Hardware System

## W100 Series for Wood Doors

**For Sliding Panels up to 198 lbs.**



NOTE: Alternate route dimension when using optional EPD3BL 3/8" Spacer

### Configurations:

- Single
- Bi-parting

### Features:

- Made of 304 stainless steel
- Nylon coated stainless steel wheel for smooth operation
- 198 lb. panel capacity
- 5 year warranty

### Finishes:

- Brushed Stainless Steel (W100)
- Black Powder Coated Stainless Steel (W100D)
- Polished Stainless Steel (W100P)
- Satin Bronze Powder Coated Stainless Steel (W100BE)

### W80 Kits Include:

- 1 ea **BAR/\_** Stainless Steel Track
- **BRACKET2** Stainless Steel Wall Brackets
- 2 ea **111** Stainless Steel Hangers
- 1 ea **102SS-KIT** Stainless Steel Guide
- 2 ea **STOP2** Stainless Steel Stops Mounting Hardware

NOTE: If ordering individual parts in the optional Black Powder Coat, Polished finishes or Satin Bronze be sure to include a prefix "D" for Black Powder Coat, "P" for Polished Stainless, or BE for Satin Bronze Powder Coat

Standard Kit Sizes			
Part Number	Material	Track Length	Door Width
W100/6	304 Stainless Steel	78 <sup>3</sup> / <sub>4</sub> "	36"
W100/8	304 Stainless Steel	98 <sup>7</sup> / <sub>16</sub> "	48"
W100D/6	Black Powder Coated Stainless Steel	78 <sup>3</sup> / <sub>4</sub> "	36"
W100D/8	Black Powder Coated Stainless Steel	98 <sup>7</sup> / <sub>16</sub> "	48"
W100P/6	304 Polished Stainless Steel	78 <sup>3</sup> / <sub>4</sub> "	36"
W100P/8	304 Polished Stainless Steel	98 <sup>7</sup> / <sub>16</sub> "	48"
W100BE/6	Satin Bronze Powder Coated Stainless Steel	78 <sup>3</sup> / <sub>4</sub> "	36"
W100BE/8	Satin Bronze Powder Coated Stainless Steel	98 <sup>7</sup> / <sub>16</sub> "	48"

Custom lengths are available. Please contact the factory to order.

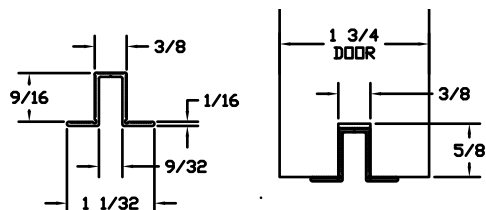
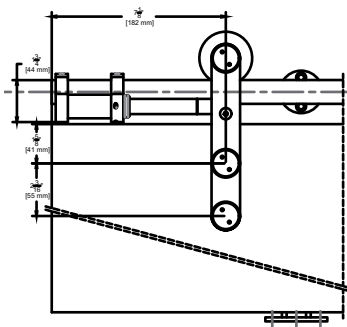
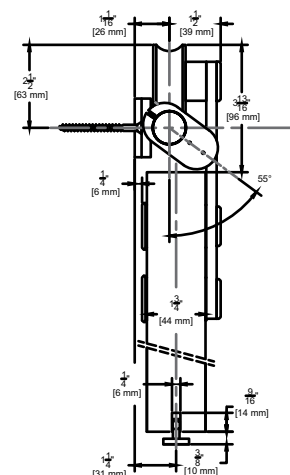
**Options:** See page 275

- |                          |  |
|--------------------------|--|
| Bottom Channel           | <b>94A</b>   |
| Roller Guide             | <b>106R/94</b>   |
| Mortise Guides           | <b>102N</b>  |
| Polypropylene Guide Rail | <b>EPD3BL</b> For Use With 102N  |
| 5/8" Spacer              | <b>BLD-SPACER-58</b> Pack of 5 5/8" Spacer<br>Recommended for use with 5/8" Gypsum Board<br>When Mounting Track Directly to Gypsum Board |
| 1/2" Spacer              | <b>BLD-SPACER-12</b> Pack of 5 1/2" Spacer<br>Recommended for use with 1/2" Gypsum Board<br>When Mounting Track Directly to Gypsum Board |
| 3/8" Spacer              | <b>BLD-SPACER-38</b> Pack of 5 3/8" Spacer<br>Recommended for use with 3/8" Gypsum Board<br>When Mounting Track Directly to Gypsum Board |

# Stainless Steel Sliding Track Hardware System With Cushion Stop

## CS-W100 Series for Wood Doors

For Sliding Panels up to 198 lbs.



NOTE: Alternate route dimension when using optional EPD3BL

### Configurations:

- Single

### Installations:

- Side Wall Mount (only)

### Features:

- Made of 304 stainless steel
- Prevents door racking and bounce back
- Extends life of upper hardware
- Nylon coated stainless steel wheel for smooth operation
- 198 lb. panel capacity
- 5 year warranty

### Finishes:

- Brushed Stainless Steel
- Dark Bronze Stainless Steel
- Polished Stainless Steel

### CS-W100 Kits Include:

- 1 ea **BAR/\_** Stainless Steel Track
- **BRACKET2** Stainless Steel Wall Brackets
- 2 ea **111** Stainless Steel Hangers
- 1 ea **102SS-KIT** Stainless Steel Guide
- 1 pr **CS-003SS** Stainless Steel Cushion Stops

NOTE: If ordering individual parts in the optional Dark Bronze or Polished finishes, be sure to include a suffix "D" for Dark Bronze or "P" for Polished Stainless

Standard Kit Sizes			
Part Number	Material	Track Length	Door Width
CS- W100/6	304 Stainless Steel	78 <sup>3</sup> / <sub>4</sub> "	36"
CS- W100/8	304 Stainless Steel	98 <sup>7</sup> / <sub>16</sub> "	48"
CS- W100D/6	304 Dark Bronze Stainless Steel	78 <sup>3</sup> / <sub>4</sub> "	36"
CS- W100D/8	304 Dark Bronze Stainless Steel	98 <sup>7</sup> / <sub>16</sub> "	48"
CS- W100P/6	304 Polished Stainless Steel	78 <sup>3</sup> / <sub>4</sub> "	36"
CS- W100P/8	304 Polished Stainless Steel	98 <sup>7</sup> / <sub>16</sub> "	48"

Custom lengths are available. Please contact the factory to order.

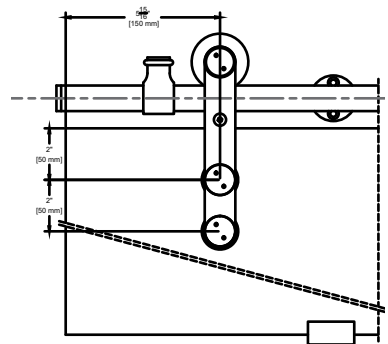
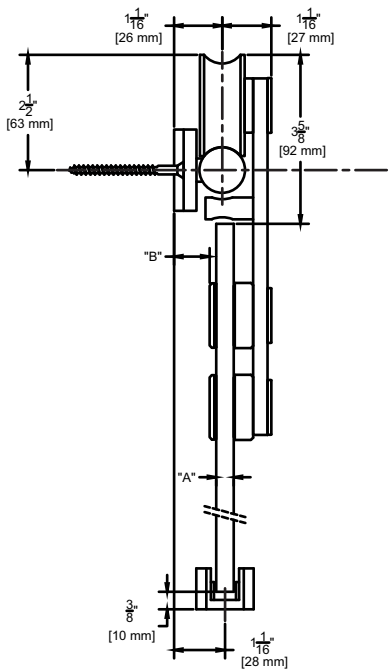
### Options: See page 275

- Bottom Channel **94A**
- Roller Guide **106R/94**
- Mortise Guides **102N**
- Polypropylene Guide Rail **EPD3BL For Use With 102SS-KIT**
- Cushion Stops **CS-003SS** (sold as pair) For use with existing openings that have W100 hardware installed"
- 5/8" Spacer **BLD-SPACER-58** Pack of 5 5/8" Spacer  
Recommended for use with 5/8" Gypsum Board When Mounting Track Directly to Gypsum Board
- 1/2" Spacer **BLD-SPACER-12** Pack of 5 1/2" Spacer  
Recommended for use with 1/2" Gypsum Board When Mounting Track Directly to Gypsum Board
- 3/8" Spacer **BLD-SPACER-38** Pack of 5 3/8" Spacer  
Recommended for use with 3/8" Gypsum Board When Mounting Track Directly to Gypsum Board

# Stainless Steel Sliding Track Hardware System

## G60 Series for Glass Doors

For Sliding Panels up to 198 lbs.



Glass Thickness "A"	Distance from Wall "B"
3/8"	3/4"
1/2"	5/8"

### Configurations:

- Single
- Bi-parting

### Features:

- Made of 304 stainless steel
- Nylon coated stainless steel wheel for smooth operation
- 198 lb. panel capacity
- 5 year warranty

### Finishes:

- Brushed Stainless Steel (G60)
- Black Powder Coated Stainless Steel (G60D)
- Polished Stainless Steel (G60P)
- 10BE Satin Bronze Powder Coated Stainless Steel (G60BE)

### G60 Kits Include:

- 1 ea **BAR/\_** Stainless Steel Track
- **BRACKET2** Stainless Steel Wall Brackets
- 2 ea **12** Stainless Steel Hangers
- 1 ea **GLASSGUIDE** Stainless Steel Guide
- 2 ea **STOP2** Stainless Steel Stops Mounting Hardware

NOTE: If ordering individual parts in the optional Black Powder Coat, Polished finishes or Satin Bronze be sure to include a prefix "D" for Black Powder Coat, "P" for Polished Stainless, or "BE" for Satin Bronze Powder Coat

Standard Kit Sizes			
Part Number	Material	Track Length	Door Width
G60/6	304 Stainless Steel	78 <sup>3</sup> / <sub>4</sub> "	36"
G60/8	304 Stainless Steel	98 <sup>7</sup> / <sub>16</sub> "	48"
G60D/6	Black Powder Coated Stainless Steel	78 <sup>3</sup> / <sub>4</sub> "	36"
G60D/8	Black Powder Coated Stainless Steel	98 <sup>7</sup> / <sub>16</sub> "	48"
G60P/6	304 Polished Stainless Steel	78 <sup>3</sup> / <sub>4</sub> "	36"
G60P/8	304 Polished Stainless Steel	98 <sup>7</sup> / <sub>16</sub> "	48"
G60BE/6	Satin Bronze Powder Coated Stainless Steel	78 <sup>3</sup> / <sub>4</sub> "	36"
G60BE/8	Satin Bronze Powder Coated Stainless Steel	98 <sup>7</sup> / <sub>16</sub> "	48"

Custom lengths are available. Please contact the factory to order.

### Options: See page 275

5/8" Spacer

**BLD-SPACER-58** Pack of 5 5/8" Spacer  
Recommended for use with 5/8" Gypsum Board When Mounting Track Directly to Gypsum Board

1/2" Spacer

**BLD-SPACER-12** Pack of 5 1/2" Spacer  
Recommended for use with 1/2" Gypsum Board When Mounting Track Directly to Gypsum Board

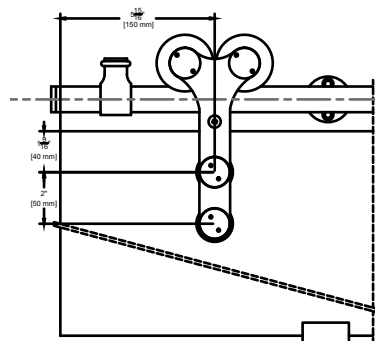
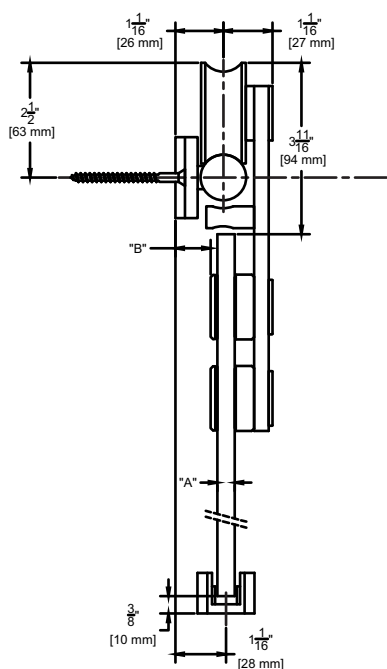
3/8" Spacer

**BLD-SPACER-38** Pack of 5 3/8" Spacer  
Recommended for use with 3/8" Gypsum Board When Mounting Track Directly to Gypsum Board

# Stainless Steel Sliding Track Hardware System

## G70 Series for Glass Doors

For Sliding Panels up to 240 lbs.



Glass Thickness "A"	Distance from Wall "B"
3/8"	3/4"
1/2"	5/8"

### Configurations:

- Single
- Bi-parting

### Installations:

- Side Wall Mount (only)

### Features:

- Made of 304 stainless steel
- Nylon coated stainless steel wheel for smooth operation
- 240 lb. panel capacity
- 5 year warranty

### Finishes:

- Brushed Stainless Steel (G70)
- Black Powder Coated Stainless Steel (G70D)
- Polished Stainless Steel (G70P)
- 10BE Satin Bronze Powder Coated Stainless Steel (G70BE)

### G70 Kits Include:

- 1 ea **BAR/\_** Stainless Steel Track
- **BRACKET2** Stainless Steel Wall Brackets
- 2 ea **32** Stainless Steel Hangers
- 1 ea **GLASSGUIDE** Stainless Steel Guide
- 2 ea **STOP2** Stainless Steel Stops Mounting Hardware

NOTE: If ordering individual parts in the optional Black Powder Coat, Polished finishes or Satin Bronze be sure to include a prefix "D" for Black Powder Coat, "P" for Polished Stainless, or "BE" for Satin Bronze Powder Coat

Standard Kit Sizes			
Part Number	Material	Track Length	Door Width
G70/6	304 Stainless Steel	78 3/4"	36"
G70/8	304 Stainless Steel	98 7/16"	48"
G70D/6	Black Powder Coated Stainless Steel	78 3/4"	36"
G70D/8	Black Powder Coated Stainless Steel	98 7/16"	48"
G70P/6	304 Polished Stainless Steel	78 3/4"	36"
G70P/8	304 Polished Stainless Steel	98 7/16"	48"
G70BE/6	Satin Bronze Powder Coated Stainless Steel	78 3/4"	36"
G70BE/8	Satin Bronze Powder Coated Stainless Steel	98 7/16"	48"

Custom lengths are available. Please contact the factory to order.

### Options: See page 275

#### Alternate Stop

5/8" Spacer

1/2" Spacer

3/8" Spacer

#### STOP1

**BLD-SPACER-58** Pack of 5 5/8" Spacer  
Recommended for use with 5/8" Gypsum Board When Mounting Track Directly to Gypsum Board

**BLD-SPACER-12** Pack of 5 1/2" Spacer  
Recommended for use with 1/2" Gypsum Board When Mounting Track Directly to Gypsum Board

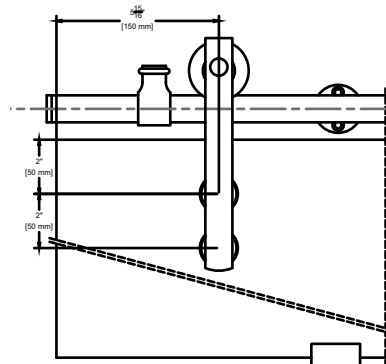
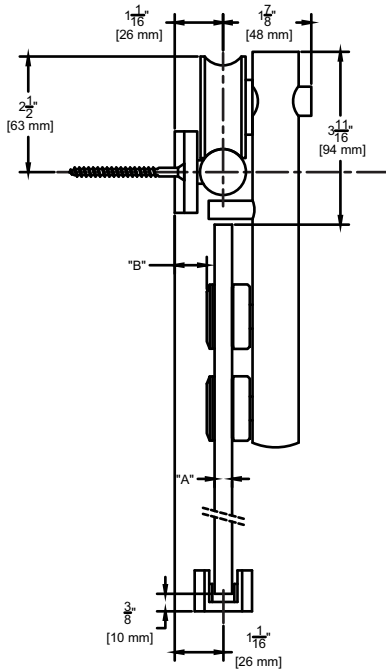
**BLD-SPACER-38** Pack of 5 3/8" Spacer  
Recommended for use with 3/8" Gypsum Board When Mounting Track Directly to Gypsum Board



# Stainless Steel Sliding Track Hardware System

## G80 Series for Glass Doors

For Sliding Panels up to 198 lbs.



### Configurations:

- Single
- Bi-parting

### Installations:

- Side Wall Mount (only)

### Features:

- Made of 304 stainless steel
- Nylon coated stainless steel wheel for smooth operation
- 198 lb. panel capacity
- 5 year warranty

### Finishes:

- Brushed Stainless Steel (G80)
- Black Powder Coated Stainless Steel (G80D)
- Polished Stainless Steel (G80P)
- 10BE Satin Bronze Powder Coated Stainless Steel (G80BE)

### G80 Kits Include:

- 1 ea **BAR/\_** Stainless Steel Track
- **BRACKET2** Stainless Steel Wall Brackets
- 2 ea **22** Stainless Steel Hangers
- 1 ea **GLASSGUIDE** Stainless Steel Guide
- 2 ea **STOP2** Stainless Steel Stops Mounting Hardware

NOTE: If ordering individual parts in the optional Black Powder Coat, Polished finishes or Satin Bronze be sure to include a prefix "D" for Black Powder Coat, "P" for Polished Stainless, or "BE" for Satin Bronze Powder Coat

Standard Kit Sizes			
Part Number	Material	Track Length	Door Width
G80/6	304 Stainless Steel	78 <sup>3</sup> / <sub>4</sub> "	36"
G80/8	304 Stainless Steel	98 <sup>7</sup> / <sub>16</sub> "	48"
G80D/6	Black Powder Coated Stainless Steel	78 <sup>3</sup> / <sub>4</sub> "	36"
G80D/8	Black Powder Coated Stainless Steel	98 <sup>7</sup> / <sub>16</sub> "	48"
G80P/6	304 Polished Stainless Steel	78 <sup>3</sup> / <sub>4</sub> "	36"
G80P/8	304 Polished Stainless Steel	98 <sup>7</sup> / <sub>16</sub> "	48"
G80BE/6	Satin Bronze Powder Coated Stainless Steel	78 <sup>3</sup> / <sub>4</sub> "	36"
G80BE/8	Satin Bronze Powder Coated Stainless Steel	98 <sup>7</sup> / <sub>16</sub> "	48"

Custom lengths are available. Please contact the factory to order.

### Options: See page 275

- 5/8" Spacer **BLD-SPACER-58** Pack of 5 5/8" Spacer  
Recommended for use with 5/8" Gypsum Board When Mounting Track Directly to Gypsum Board
- 1/2" Spacer **BLD-SPACER-12** Pack of 5 1/2" Spacer  
Recommended for use with 1/2" Gypsum Board When Mounting Track Directly to Gypsum Board
- 3/8" Spacer **BLD-SPACER-38** Pack of 5 3/8" Spacer  
Recommended for use with 3/8" Gypsum Board When Mounting Track Directly to Gypsum Board

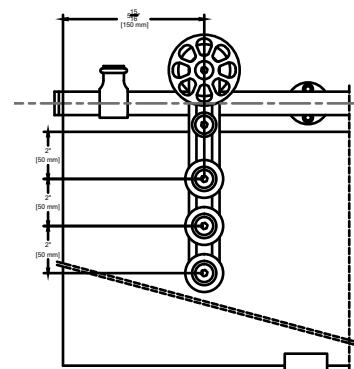
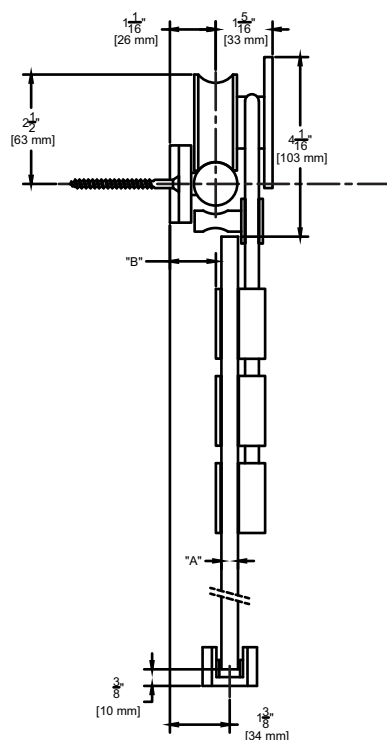
Glass Thickness "A"	Distance from Wall "B"
3/8"	11/16"
1/2"	9/16"



# Stainless Steel Sliding Track Hardware System

## G90 Series for Glass Doors

For Sliding Panels up to 198 lbs.



### Configurations:

- Single
- Bi-parting

### Installations:

- Side Wall Mount (only)

### Features:

- Made of 304 stainless steel
- Nylon coated stainless steel wheel for smooth operation
- 198 lb. panel capacity
- 5 year warranty

### Finishes:

- Brushed Stainless Steel (G90)
- Black Powder Coated Stainless Steel (G90D)
- Polished Stainless Steel (G90P)
- 10BE Satin Bronze Powder Coated Stainless Steel (G90BE)

### G90 Kits Include:

- 1 ea **BAR/\_** Stainless Steel Track
- **BRACKET2** Stainless Steel Wall Brackets
- 2 ea **42** Stainless Steel Hangers
- 1 ea **GLASSGUIDE** Stainless Steel Guide
- 2 ea **STOP2** Stainless Steel Stops Mounting Hardware

NOTE: If ordering individual parts in the optional Black Powder Coat, Polished finishes or Satin Bronze be sure to include a prefix "D" for Black Powder Coat, "P" for Polished Stainless, or "BE" for Satin Bronze Powder Coat

### Standard Kit Sizes

Part Number	Material	Track Length	Door Width
G90/6	304 Stainless Steel	78 <sup>3</sup> / <sub>4</sub> "	36"
G90/8	304 Stainless Steel	98 <sup>7</sup> / <sub>16</sub> "	48"
G90D/6	Black Powder Coated Stainless Steel	78 <sup>3</sup> / <sub>4</sub> "	36"
G90D/8	Black Powder Coated Stainless Steel	98 <sup>7</sup> / <sub>16</sub> "	48"
G90P/6	304 Polished Stainless Steel	78 <sup>3</sup> / <sub>4</sub> "	36"
G90P/8	304 Polished Stainless Steel	98 <sup>7</sup> / <sub>16</sub> "	48"
G90BE/6	Satin Bronze Powder Coated Stainless Steel	78 <sup>3</sup> / <sub>4</sub> "	36"
G90BE/8	Satin Bronze Powder Coated Stainless Steel	98 <sup>7</sup> / <sub>16</sub> "	48"

Custom lengths are available. Please contact the factory to order.

### Options: See page 275

5/8" Spacer

**BLD-SPACER-58** Pack of 5 5/8" Spacer  
Recommended for use with 5/8" Gypsum Board When Mounting Track Directly to Gypsum Board

1/2" Spacer

**BLD-SPACER-12** Pack of 5 1/2" Spacer  
Recommended for use with 1/2" Gypsum Board When Mounting Track Directly to Gypsum Board

3/8" Spacer

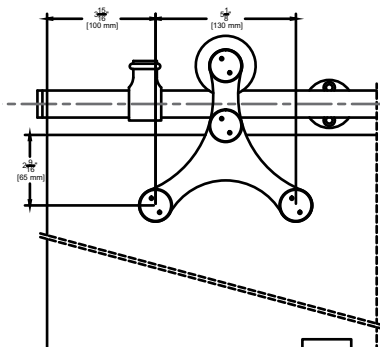
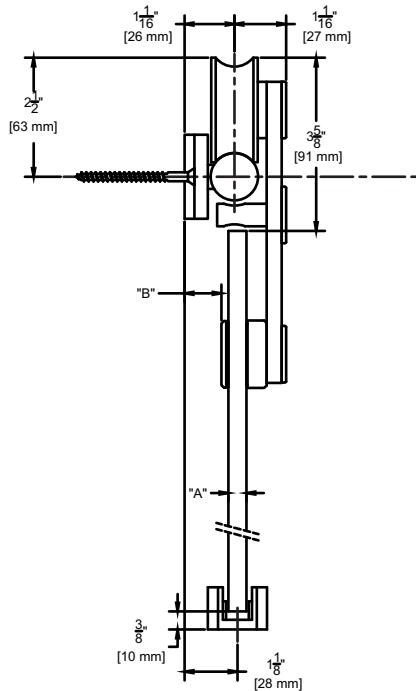
**BLD-SPACER-38** Pack of 5 3/8" Spacer  
Recommended for use with 3/8" Gypsum Board When Mounting Track Directly to Gypsum Board

Glass Thickness "A"	Distance from Wall "B"
3/8"	1 1/16"
1/2"	15/16"

# Stainless Steel Sliding Track Hardware System

## G100 Series for Glass Doors

For Sliding Panels up to 198 lbs.



### Configurations:

- Single
- Bi-parting

### Features:

- Made of 304 stainless steel
- Nylon coated stainless steel wheel for smooth operation
- 198 lb. panel capacity
- 5 year warranty

### Finishes:

- Brushed Stainless Steel (G100)
- Black Powder Coated Stainless Steel (G100D)
- Polished Stainless Steel (G100P)
- 10BE Satin Bronze Powder Coated Stainless Steel (G100BE)

### G100 Kits Include:

- 1 ea **BAR/\_** Stainless Steel Track
- **BRACKET2** Stainless Steel Wall Brackets
- 2 ea **52** Stainless Steel Hangers
- 1 ea **GLASSGUIDE** Stainless Steel Guide
- 2 ea **STOP2** Stainless Steel Stops Mounting Hardware

NOTE: If ordering individual parts in the optional Black Powder Coat, Polished finishes or Satin Bronze be sure to include a prefix "D" for Black Powder Coat, "P" for Polished Stainless, or "BE" for Satin Bronze Powder Coat

Standard Kit Sizes			
Part Number	Material	Track Length	Door Width
G100/6	304 Stainless Steel	78 <sup>3</sup> / <sub>4</sub> "	36"
G100/8	304 Stainless Steel	98 <sup>7</sup> / <sub>16</sub> "	48"
G100D/6	Black Powder Coated Stainless Steel	78 <sup>3</sup> / <sub>4</sub> "	36"
G100D/8	Black Powder Coated Stainless Steel	98 <sup>7</sup> / <sub>16</sub> "	48"
G100P/6	304 Polished Stainless Steel	78 <sup>3</sup> / <sub>4</sub> "	36"
G100P/8	304 Polished Stainless Steel	98 <sup>7</sup> / <sub>16</sub> "	48"
G100BE/6	Satin Bronze Powder Coated Stainless Steel	78 <sup>3</sup> / <sub>4</sub> "	36"
G100BE/8	Satin Bronze Powder Coated Stainless Steel	98 <sup>7</sup> / <sub>16</sub> "	48"

Custom lengths are available. Please contact the factory to order.

### Options: See page 275

5/8" Spacer

**BLD-SPACER-58** Pack of 5 5/8" Spacer  
Recommended for use with 5/8" Gypsum Board When Mounting Track Directly to Gypsum Board

1/2" Spacer

**BLD-SPACER-12** Pack of 5 1/2" Spacer  
Recommended for use with 1/2" Gypsum Board When Mounting Track Directly to Gypsum Board

3/8" Spacer

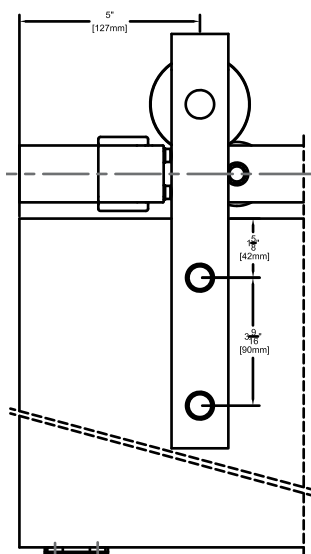
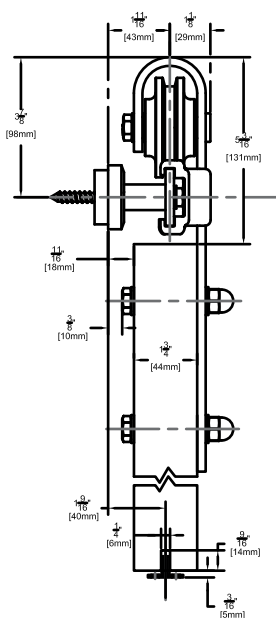
**BLD-SPACER-38** Pack of 5 3/8" Spacer  
Recommended for use with 3/8" Gypsum Board When Mounting Track Directly to Gypsum Board

Glass Thickness "A"	Distance from Wall "B"
3/8"	3/4"
1/2"	5/8"

# Builders Series Flat Track Sliding Door Hardware System

## BLD-FT-01 for Wood Doors

For Sliding Panels up to 240 lbs.



### Configurations:

- Single
- Bi-parting

### Features:

- Solid nylon wheel for smooth operation
- 240 lb. panel capacity
- 5 year warranty

### Finishes:

- Black Suede Powder Coated Steel (BLD-FT-01BS)
- Industrial Steel Zinc Coated Steel (BLD-FT-01IS)

### BLD-FT-01 Kits Include:

- 1 ea **BLD-FT\_/\_** Steel Flat Track
- 5 ea **BLD-99\_** Steel Track Brackets
- 2 ea **BLD-01-\_** Steel Strap Mount Hangers
- 2 ea **BLD-77** Anti-Rise Discs
- 1 ea **102N** Mortised Type Nylon Guide
- 2 ea **BLD-11-\_** Steel Track Stops Mounting Hardware

### Standard Kit Sizes

Part Number	Material	Track Length	Door Width
BLD-FT-01IS/6	Industrial Steel	72"	36"
BLD-FT-01IS/8	Industrial Steel	96"	48"
BLD-FT-01BS/6	Black Suede Powder Coated Steel	72"	36"
BLD-FT-01BS/8	Black Suede Powder Coated Steel	96"	48"

Custom lengths are available. Please contact the factory to order.

### Options: See page 275

Bottom Channel

Roller Guide

Side Wall Mortised Type Guide

Polypropylene Guide Rail

5/8" Spacer

1/2" Spacer

3/8" Spacer

**94A**

**106R/94**

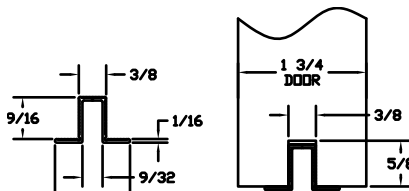
**102WN-KIT**

**EPD3BL** For Use With 102N

**BLD-SPACER-58** Pack of 5 5/8" Spacer Recommended for use with 5/8" Gypsum Board When Mounting Track Directly to Gypsum Board

**BLD-SPACER-12** Pack of 5 1/2" Spacer Recommended for use with 1/2" Gypsum Board When Mounting Track Directly to Gypsum Board

**BLD-SPACER-38** Pack of 5 3/8" Spacer Recommended for use with 3/8" Gypsum Board When Mounting Track Directly to Gypsum Board



NOTE: Alternate route dimension when using optional EPD3BL



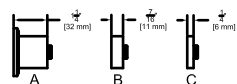
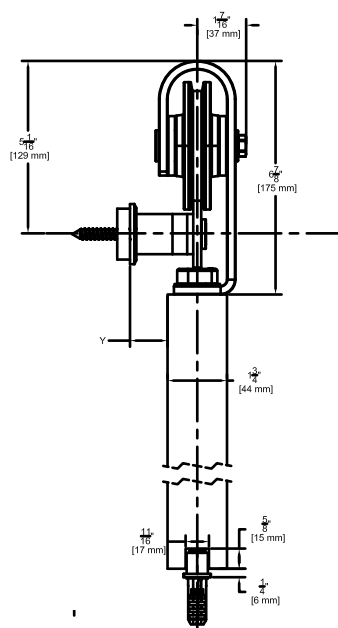
# Designer Series Flat Track Sliding Door Hardware System

## DSG-FT-03 for Wood Doors

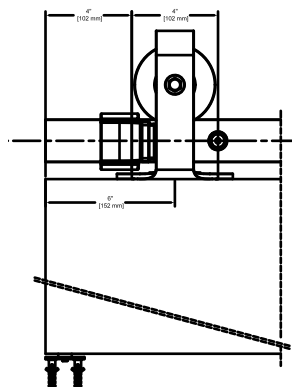
For Sliding Panels up to 500 lbs.



Shown in 10BE Satin Bronze finish



Wall Bracket Combination				
A	A+C	A+B	A+B+C	
"Y"	1/2"	3/4"	1"	1-1/4"



### Configurations:

- Single
- Bi-parting

### Installations:

- Side Wall Mount (only)

### Features:

- Solid steel wheel with a polymer resin contact surface for smooth operation
- 500 lb. panel capacity
- 5 year warranty

### Finishes:

- Black Suede Powder Coated Steel (DSG-FT-03BS)
- Industrial Steel Zinc Coated Steel (DSG-FT-03IS)
- Wrought Black Powder Coated Steel (DSG-FT-03WB)
- 10BE Satin Bronze Powder Coated Steel (DSG-FT-03BZ)
- Stainless Steel (DSG-FT-03SS)

### DSG-FT-03 Kits include:

- 1 ea **DSG-FT-03** Steel Flat Track
- 7 to 9 ea **DSG-100** Steel Track Brackets
- 2 ea **DSG-03** Steel Top Mount Hangers
- 2 ea **DSG-78** Anti-Rise Blocks
- 1 ea **DSG-106** Mortised Type Roller Guide
- 2 ea **DSG-12** Steel Track Stops Mounting Hardware

### Standard Kit Sizes

Part Number	Material	Track Length	Door Width
DSG-FT-03IS/6	Industrial Steel	72"	36"
DSG-FT-03IS/8	Industrial Steel	96"	48"
DSG-FT-03BS/6	Black Suede Powder Coated Steel	72"	36"
DSG-FT-03BS/8	Black Suede Powder Coated Steel	96"	48"
DSG-FT-03WB/6	Wrought Black Powder Coated Steel	72"	36"
DSG-FT-03WB/8	Wrought Black Powder Coated Steel	96"	48"
DSG-FT-03BZ/6	10BE Satin Bronze Powder Coated Steel	72"	36"
DSG-FT-03BZ/8	10BE Satin Bronze Powder Coated Steel	96"	48"
DSG-FT-03SS/6	Stainless Steel	72"	36"
DSG-FT-03SS/8	Stainless Steel	96"	48"

Custom lengths are available. Please contact the factory to order.

### Options: See page 275

Bottom Channel

Roller Guide

Side Wall Mortised Type Guide

5/8" Spacer

1/2" Spacer

3/8" Spacer

94A

106R/94

102WN-KIT

**BLD-SPACER-58** Pack of 5 5/8" Spacer  
Recommended for use with 5/8" Gypsum Board When Mounting Track Directly to Gypsum Board

**BLD-SPACER-12** Pack of 5 1/2" Spacer  
Recommended for use with 1/2" Gypsum Board When Mounting Track Directly to Gypsum Board

**BLD-SPACER-38** Pack of 5 3/8" Spacer  
Recommended for use with 3/8" Gypsum Board When Mounting Track Directly to Gypsum Board

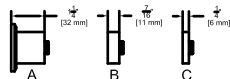
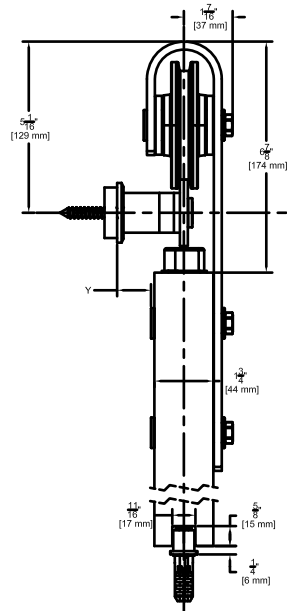
# Designer Series Flat Track Sliding Door Hardware System

## DSG-FT-04 for Wood Doors

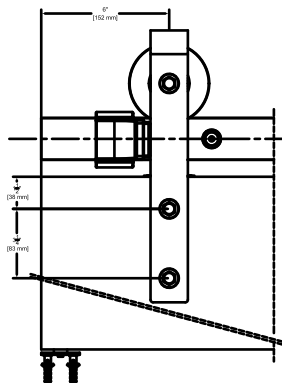
For Sliding Panels up to 500 lbs.



Shown in Wrought Black finish



Wall Bracket Combination			
A	A+C	A+B	A+B+C
"Y"	7/16"	11/16"	7/8"
			1-1/8"



### Configurations:

- Single
- Bi-parting

### Installations:

- Side Wall Mount (only)

### Features:

- Solid steel wheel with a polymer resin contact surface for smooth operation
- 500 lb. panel capacity
- 5 year warranty

### Finishes:

- Black Black Suede Powder Coated Steel (DSG-FT-04BS)
- Industrial Steel Zinc Coated Steel (DSG-FT-04IS)
- Wrought Black Powder Coated Steel (DSG-FT-04WB)
- 10BE Satin Bronze Powder Coated Steel (DSG-FT-04BZ)
- Stainless Steel (DSG-FT-04SS)

### DSG-FT-04 Kits include:

- 1 ea **DSG-FT-04** Steel Flat Track
- 7 to 9 ea **DSG-100** Steel Track Brackets
- 2 ea **DSG-04** Steel Top Mount Hangers
- 2 ea **DSG-78** Anti-Rise Blocks
- 1 ea **DSG-106** Mortised Type Roller Guide
- 2 ea **DSG-12** Steel Track Stops Mounting Hardware

### Standard Kit Sizes

Part Number	Material	Track Length	Door Width
DSG-FT-04IS/6	Industrial Steel	72"	36"
DSG-FT-04IS/8	Industrial Steel	96"	48"
DSG-FT-04BS/6	Black Suede Powder Coated Steel	72"	36"
DSG-FT-04BS/8	Black Suede Powder Coated Steel	96"	48"
DSG-FT-04WB/6	Wrought Black Powder Coated Steel	72"	36"
DSG-FT-04WB/8	Wrought Black Powder Coated Steel	96"	48"
DSG-FT-04BZ/6	10BE Satin Bronze Powder Coated Steel	72"	36"
DSG-FT-04BZ/8	10BE Satin Bronze Powder Coated Steel	96"	48"
DSG-FT-04SS/6	Stainless Steel	72"	36"
DSG-FT-04SS/8	Stainless Steel	96"	48"

Custom lengths are available. Please contact the factory to order.

### Options: See page 275

Bottom Channel

Roller Guide

Side Wall Mortised Type Guide

5/8" Spacer

1/2" Spacer

3/8" Spacer

94A

106R/94

102WN-KIT

**BLD-SPACER-58** Pack of 5 5/8" Spacer Recommended for use with 5/8" Gypsum Board When Mounting Track Directly to Gypsum Board

**BLD-SPACER-12** Pack of 5 1/2" Spacer Recommended for use with 1/2" Gypsum Board When Mounting Track Directly to Gypsum Board

**BLD-SPACER-38** Pack of 5 3/8" Spacer Recommended for use with 3/8" Gypsum Board When Mounting Track Directly to Gypsum Board

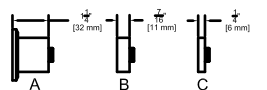
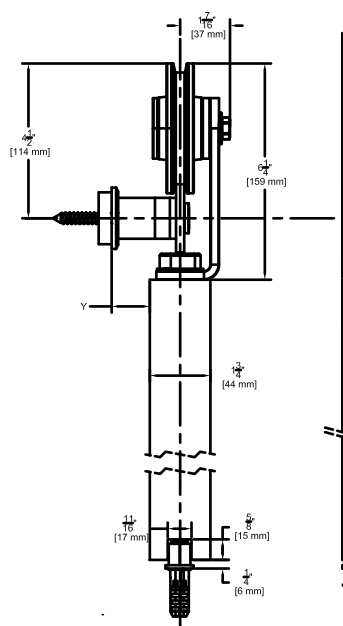
# Designer Series Flat Track Sliding Door Hardware System

## DSG-FT-05 for Wood Doors

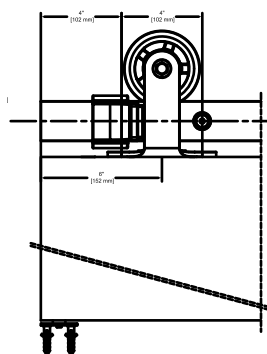
For Sliding Panels up to 500 lbs.



Shown in Industrial Steel finish



Wall Bracket Combination				
	A	A+C	A+B	A+B+C
"Y"	1/2"	3/4"	1"	1-1/4"



### Configurations:

- Single
- Bi-parting

### Installations:

- Side Wall Mount (only)

### Features:

- Solid steel wheel with a polymer resin contact surface for smooth operation
- 500 lb. panel capacity
- 5 year warranty

### Finishes:

- Black Suede Powder Coated Steel (DSG-FT-05BS)
- Industrial Steel Zinc Coated Steel (DSG-FT-05IS)
- Wrought Black Powder Coated Steel (DSG-FT-05WB)
- 10BE Satin Bronze Powder Coated Steel (DSG-FT-05BZ)
- Stainless Steel (DSG-FT-05SS)

### DSG-FT-05 Kits include:

- 1 ea **DSG-FT-05** Steel Flat Track
- 7 to 9 ea **DSG-100** Steel Track Brackets
- 2 ea **DSG-05** Steel Top Mount Hangers
- 2 ea **DSG-78** Anti-Rise Blocks
- 1 ea **DSG-106** Mortised Type Roller Guide
- 2 ea **DSG-12** Steel Track Stops Mounting Hardware

### Standard Kit Sizes

Part Number	Material	Track Length	Door Width
DSG-FT-05IS/6	Industrial Steel	72"	36"
DSG-FT-05IS/8	Industrial Steel	96"	48"
DSG-FT-05BS/6	Black Suede Powder Coated Steel	72"	36"
DSG-FT-05BS/8	Black Suede Powder Coated Steel	96"	48"
DSG-FT-05WB/6	Wrought Black Powder Coated Steel	72"	36"
DSG-FT-05WB/8	Wrought Black Powder Coated Steel	96"	48"
DSG-FT-05BZ/6	10BE Satin Bronze Powder Coated Steel	72"	36"
DSG-FT-05BZ/8	10BE Satin Bronze Powder Coated Steel	96"	48"
DSG-FT-05SS/6	Stainless Steel	72"	36"
DSG-FT-05SS/8	Stainless Steel	96"	48"

Custom lengths are available. Please contact the factory to order.

### Options: See page 275

Bottom Channel

Roller Guide

Side Wall Mortised Type Guide

5/8" Spacer

1/2" Spacer

3/8" Spacer

**94A**

**106R/94**

**102WN-KIT**

**BLD-SPACER-58** Pack of 5 5/8" Spacer  
Recommended for use with 5/8" Gypsum Board When Mounting Track Directly to Gypsum Board

**BLD-SPACER-12** Pack of 5 1/2" Spacer  
Recommended for use with 1/2" Gypsum Board When Mounting Track Directly to Gypsum Board

**BLD-SPACER-38** Pack of 5 3/8" Spacer  
Recommended for use with 3/8" Gypsum Board When Mounting Track Directly to Gypsum Board



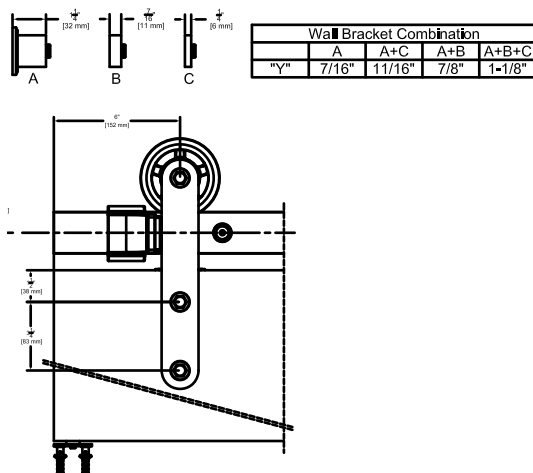
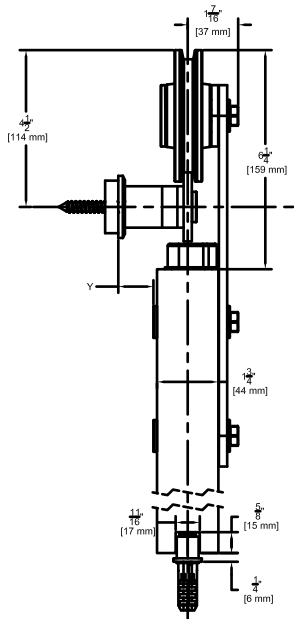
# Designer Series Flat Track Sliding Door Hardware System

## DSG-FT-06 for Wood Doors

For Sliding Panels up to 500 lbs.



Shown in Stainless Steel with a solid wheel. DSG-FT-06 in all other finishes have spoked wheels.



### Configurations:

- Single
- Bi-parting

### Installations:

- Side Wall Mount (only)

### Features:

- Solid steel wheel with a polymer resin contact surface for smooth operation
- 500 lb. panel capacity
- 5 year warranty

### Finishes:

- Black Black Suede Powder Coated Steel (DSG-FT-06BS)
- Industrial Steel Zinc Coated Steel (DSG-FT-06IS)
- Wrought Black Powder Coated Steel (DSG-FT-06WB)
- 10BE Satin Bronze Powder Coated Steel (DSG-FT-64BZ)
- Stainless Steel (DSG-FT-06SS)

### DSG-FT-06 Kits include:

- 1 ea **DSG-FT-06** Steel Flat Track
- 7 to 9 ea **DSG-100** Steel Track Brackets
- 2 ea **DSG-06** Steel Top Mount Hangers
- 2 ea **DSG-78** Anti-Rise Blocks
- 1 ea **DSG-106** Mortised Type Roller Guide
- 2 ea **DSG-12** Steel Track Stops Mounting Hardware

### Standard Kit Sizes

Part Number	Material	Track Length	Door Width
DSG-FT-06IS/6	Industrial Steel	72"	36"
DSG-FT-06IS/8	Industrial Steel	96"	48"
DSG-FT-06BS/6	Black Suede Powder Coated Steel	72"	36"
DSG-FT-06BS/8	Black Suede Powder Coated Steel	96"	48"
DSG-FT-06WB/6	Wrought Black Powder Coated Steel	72"	36"
DSG-FT-06WB/8	Wrought Black Powder Coated Steel	96"	48"
DSG-FT-06BZ/6	10BE Satin Bronze Powder Coated Steel	72"	36"
DSG-FT-06BZ/8	10BE Satin Bronze Powder Coated Steel	96"	48"
DSG-FT-06SS/6	Stainless Steel	72"	36"
DSG-FT-06SS/8	Stainless Steel	96"	48"

Custom lengths are available. Please contact the factory to order.

### Options: See page 275

Bottom Channel

Roller Guide

Side Wall Mortised Type Guide

5/8" Spacer

1/2" Spacer

3/8" Spacer

**94A**

**106R/94**

**102WN-KIT**

**BLD-SPACER-58** Pack of 5 5/8" Spacer  
Recommended for use with 5/8" Gypsum Board When Mounting Track Directly to Gypsum Board

**BLD-SPACER-12** Pack of 5 1/2" Spacer  
Recommended for use with 1/2" Gypsum Board When Mounting Track Directly to Gypsum Board

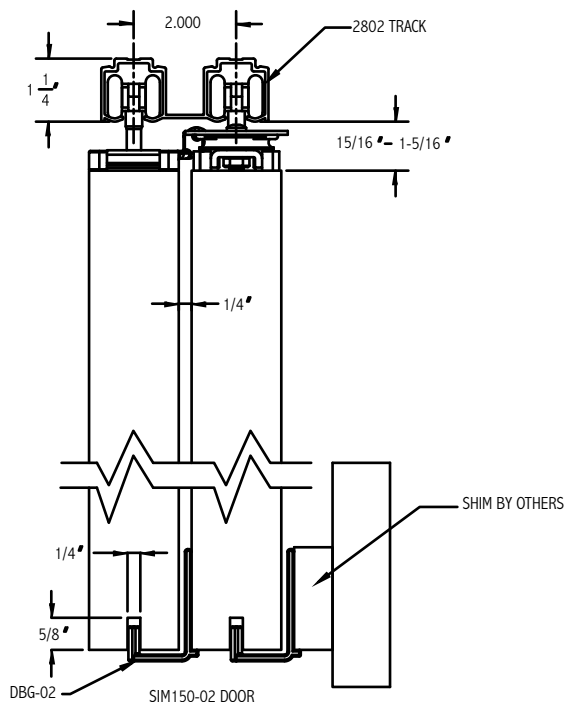
**BLD-SPACER-38** Pack of 5 3/8" Spacer  
Recommended for use with 3/8" Gypsum Board When Mounting Track Directly to Gypsum Board



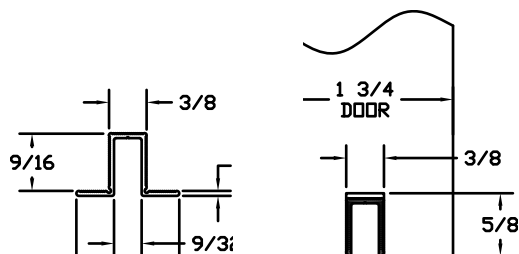
# Simultaneous Acting Sliding Door System

## SIM 150 for 2 Door Systems

For Sliding Panels up to 176 lbs.



### Alternate Route for EPD3BL



### Configurations:

- Bi-part Telescoping

### Installations:

- Overhead Mount

### Features:

- Easy to install with self aligning components
- Telescoping panels glide along the track
- Doors retract into storage pockets when not in use
- 5 year warranty

### Finishes:

- Clear (C)
- Dark Bronze (D)

## Pulley System Kit Includes:

Pre-Assembled Pulley System

In-Track Stops and Hangers

Door Bottom Guides

Floor Stops, Back Stop and End Plates

Installation Fasteners

Single Extrusion Aluminum Track must be ordered separately.

Specify door width when ordering. Default door overlap is 3". Any other overlap must be specified (Min. overlap is 2").

### Pulley System Kits

Part Number	Door Width
SIM150-2-LH/25-32	25" - 32"
SIM150-2-LH/33-40	33" - 40"
SIM150-2-LH/41-48	41" - 48"
SIM150-2-RH/25-32	25" - 32"
SIM150-2-RH/33-40	33" - 40"
SIM150-2-RH/41-48	41" - 48"

### System Track

Track	Finish	Track Length
2802C	Clear	up to 147"
2802D	Dark	up to 185"

### Options:

Lock Kit- includes lock with edge pull, and cup pull, **SIM150-LOCKKIT**

Bolt Kit- includes surface bolt, dust-proof strike, cup pull, and edge pull, **SIM150-BOLTKIT**

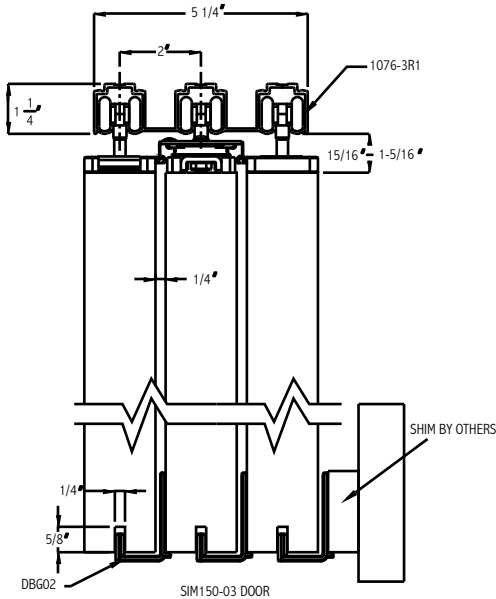
Snap-on Fascia Available **F134**

Polypropylene Guide Rail **EPD3BL**

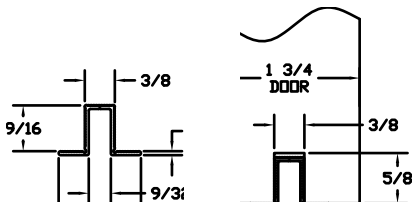
# Simultaneous Acting Sliding Door System

## SIM 150 for 3 Door Systems

For Sliding Panels up to 176 lbs.



### Alternate Route for EPD3BL



### Configurations:

- Bi-part Telescoping

### Installations:

- Overhead Mount

### Features:

- Easy to install with self aligning components
- Telescoping panels glide along the track
- Doors retract into storage pockets when not in use
- 5 year warranty

### Finishes:

- Clear (C)
- Dark Bronze (D)

## Pulley System Kit Includes:

Pre-Assembled Pulley System

In-Track Stops and Hangers

Door Bottom Guides

Floor Stops, Back Stop and End Plates

Installation Fasteners

Single Extrusion Aluminum Track must be ordered separately.

Specify door width when ordering. Default door overlap is 3". Any other overlap must be specified (Min. overlap is 2").

### Pulley System Kits

Part Number	Door Width
SIM150-3-LH/25-32	25" - 32"
SIM150-3-LH/33-40	33" - 40"
SIM150-3-LH/41-48	41" - 48"
SIM150-3-RH/25-32	25" - 32"
SIM150-3-RH/33-40	33" - 40"
SIM150-3-RH/41-48	41" - 48"

### System Track

Track	Finish	Track Length
2803C	Clear	up to 185"
2803D	Dark	up to 185"

### Options:

Lock Kit- includes lock with edge pull, and cup pull, **SIM150-LOCKKIT**

Bolt Kit- includes surface bolt, dust-proof strike, cup pull, and edge pull, **SIM150-BOLTKIT**

Snap-on Fascia Available **F134**

Polypropylene Guide Rail **EPD3BL**

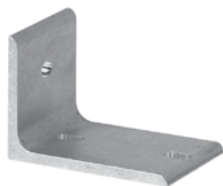
# Options & Accessories

A visual guide to various parts

## Mounting Brackets

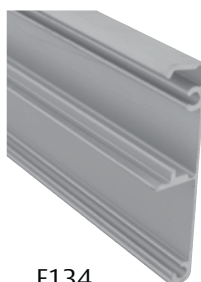


281  
(Sold in 5 packs, 2815)

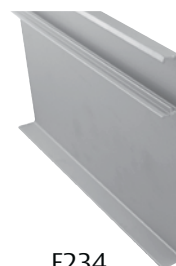


2812

## Fascia



F134



F234

## End plates



K134EP

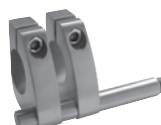
## Stops



TELS-14KIT



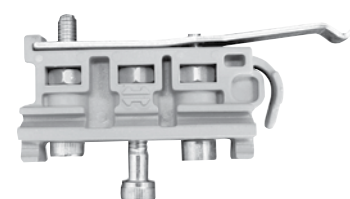
287HD



STOP1  
W70 and G70 Kits only



PFBS



601H

## Guides



102N



PFBG-4



106R/94



102WA



PFBG-8



106N/94

## Pulls and Flush Bolts

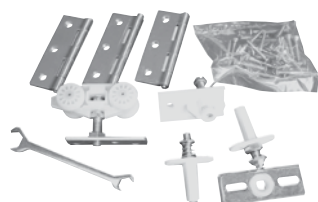


503SF

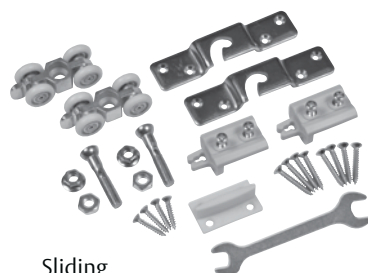


FB150SS

## Hardware Kits



Folding  
HF2/100 Pack



Sliding  
H200PACK

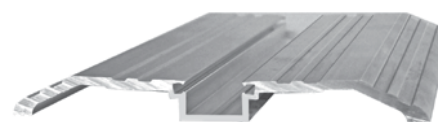
## Bottom Channel



94A



2802BT



971A