

## Table Of Contents

<b>Surface Bolts</b>	page
SB360 Surface Bolt .....	D2
SB453 Surface Bolt .....	D2
SB1600 Surface Bolt .....	D3
SB1601M1 Surface Bolt .....	D3
SB1601M2 Surface Bolt .....	D3
40 Surface Bolt, Decorative .....	D4
253 Surface Bolt, Decorative .....	D5
S48 Mortise Door Bolt .....	D6
054 Dutch Door Bolt .....	D6
<b>Door Guards</b>	
481 Chain Door Guard .....	D7
482 Solid Bar Door Guard .....	D7
<b>Roller Latch</b>	
RL30 Roller Latch .....	D8
RL32 Roller Latch .....	D8
RL36 Roller Latch .....	D9
RL38 Roller Latch .....	D9
RL1152 Roller Latch .....	D10
STK685 Strike Plate .....	D10
STK685L Strike Plate .....	D10
<b>Angle Stop</b>	
AS18 Angle Stop .....	D11
AS895 Angle Stop .....	D11
<b>Latches/Catches</b>	
CL11 Invisible Latch .....	D12
CL12 Invisible Latch .....	D12
CL14 Auxiliary Pusher .....	D12
CL21 Ball Catch .....	D13
CL21A Ball Catch .....	D13
CL22 Ball Catch .....	D13
325 Magnetic Catch .....	D14
326 Magnetic Catch, Heavy Duty .....	D14
327 Magnetic Catch, Heavy Duty .....	D14
330 Roller Catch .....	D15
335 Roller Catch .....	D15
336 Roller Catch .....	D15
345 Ball Catch, Adjustable .....	D16
347 Ball Catch, Dual Adjustable .....	D16
349 Ball Catch .....	D16



A  
Hinges & Pivots

B  
Pulls & Plates

C  
Flush Bolts & Coordinators

D1  
Latches, Catches & Bolts

E  
Stops

F  
Exterior Hardware

G  
Miscellaneous Hardware

A

Hinges & Pivots

B

Pulls & Plates

C

Flush Bolts & Coordinators

D2

Latches, Catches & Bolts

E

Stops

F

Exterior Hardware

G

Miscellaneous Hardware



Meets ANSI/BHMA A 156.16  
UL listed 3 hour fire door, up to 10'0"  
Miami Dade County NOA Listed

## SB360 Surface Bolt

- Surface Bolt has 1-1/4" throw for maximum security.
- Jimmy-resistant design, bolt locks automatically when thrown, can be released only by pressing knob toward door while retracting.
- Ideal for all types of doors.
- Available in 12" length
- Unit locks in both the up and down position.
- Accepts padlock (not furnished) with maximum 3/8" diameter shackle, minimum 1-3/4" shackle opening height.
- Units packed with one-way screws for added security. Standard screws also supplied.
- Units packed with both a universal top strike (US) and a mortise bottom strike (MS).
- Constructed of heavy duty steel.
- Optional Sex Bolts available.
- Optional Mortise Strike available.

### Dimensions

Bar: 3/4" Wide x 3/4" Thick

Overall Width: 2-1/32"

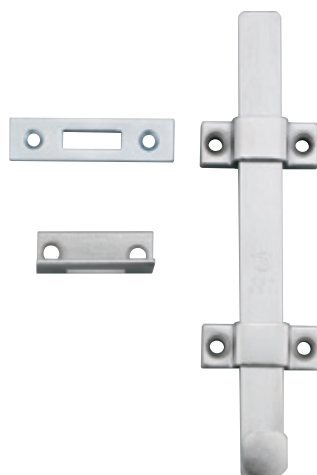
Overall Projection: 2-1/16"

Top Strike: 1-1/2" Wide x 1-1/2" Long x 3/16" Thick

Optional Mortise Strike: 1-5/8" Wide x 3-1/2" Long x 1/8" Thick

### Finishes

Ives Number	US2C
BHMA	603



Meets ANSI/BHMA A156.16 L84161  
UL listed 3 hour fire door, up to 10'0"

## SB453 Surface Bolt

- Surface Bolt has 1-3/16" throw for maximum security.
- Strong tension springs prevent creep.
- Ideal for all types of doors.
- Available 8" & 12" lengths.
- Units packed with standard screws for added security.
- Units packed with both a universal top strike (US) and a mortise bottom strike (MS).
- Constructed of heavy duty steel.
- Optional Sex Bolts available.
- Optional Thru Bolts available.

### Dimensions

Bar: 3/4" Wide x 1/4" Thick

Overall Width: 2-1/32"

Overall Projection: 1-5/16"

Top Strike: 1-1/2" Wide x 1-1/2" Long x 3/16" Thick

Bottom Strike: 1-5/8" Wide x 3-1/2" Long x 1/8" Thick

### Finishes

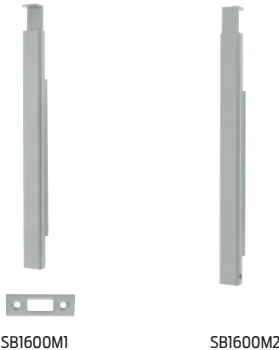
Ives Number	US2C	US3	US4*	US10	US10B	US26D
BHMA	603	632	633	639	640	652

\* only available in 8" bolt length.



1630 meets ANSI/BHMA A156.16, L84161 and UL listed 3 hour fire doors up to 8'0" in height.

1640 meets ANSI/BHMA A156.16, L24161.



SB1600M1

SB1600M2

UL listed 3 hour fire doors up to 8'0" in height.

### SB1600 Surface Bolt

- Standard Surface Bolt has 1" throw for maximum security.
- Ideal for all types of doors.
- Fully concealed mounting prevents vandalism.
- Available in locking version. Unit locks in both the up and down position. Locking Bolts are furnished with 2 keys in 4 keying variations.
- Units packed with wood and machine screws to meet most field conditions.
- Units available with either a universal top strike (T) or a flat bottom strike (B).
- 1630 Series is constructed of heavy duty steel.
- 1640 Series is constructed of brass.
- Optional sex bolts available

### Dimensions

Body: 8" Long x 7/8" Wide x 3/4" Thick,

Overall Knob or Lock Housing Projection: 1-1/2"

Top Strike: 1-1/4" Wide x 7/8" Tall x 15/16" Deep

Bottom Strike: 3" Long x 1" Wide x 1/8" Thick

### SB1630 Finishes *steel*

Ives Number	US2G	US10B	US26D
BHMA	604	640	652

### SB1640 Finishes *brass*

Ives Number	US3	US10B	US26D
BHMA	605	613	626

### SB1600M1 SB1600M2 Surface Bolt

- Standard Surface Bolt has 3-1/2" throw for maximum security and for doors with larger undercuts.
- Sleek handle design.
- Ideal for all types of doors.
- Fully concealed mounting prevents vandalism.
- Available in locking version. Unit locks in both the up and down position. Locking bolts are furnished with 2 keys in 4 keying variations.
- Units packed with wood and machine screws to meet most field conditions.
- Units available with either a universal top strike (T) or a flat bottom strike (B).
- Constructed of heavy duty steel.
- Optional sex bolts available

### Dimensions

Bar: 11" Long x 3/4" Wide x 3/4" Thick, locking version 1-1/2" Thick

Top Strike: 1-1/4" Wide x 7/8" Tall x 15/16" Deep

Bottom Strike: 3" Long x 1" Wide x 1/8" Thick

### Finishes

Ives Number	SP4	SP10	SP28	SP313	SPBLK
BHMA	706	691	689	695	622

Hinges & Pivots  
**A**

Pulls & Plates  
**B**

Flush Bolts & Coordinators  
**C**

Latches, Catches & Bolts  
**D3**

Stops  
**E**

Exterior Hardware  
**F**

Miscellaneous Hardware  
**G**



Meets ANSI/BHMA A156.16

### 40 Decorative Surface Bolt

- Concealed screw design enhances appearance and security.
- Exceptional strength and durability provided by interlocking construction of heavy gauge track and rod.
- Permanent stop prevents rod disengagement from track.
- Tension spring holds bolt in desired position.
- Track assures smooth operation and interlocks with side edges of rod to eliminate marring.
- Decorative 5/8" diameter knob designed to facilitate bolt operation.
- Made from extruded brass or aluminum.
- Available in 3", 4" and 6" lengths.
- Packed with both Universal and Mortise Strikes.

#### Dimensions

Throw: 15/16"  
 Projection: 3/4"  
 Width: 11/16"  
 Length: 3", 4" or 6"

#### Finishes *brass*

Ives Number	B3	B5	B10B	B15	B26	B26D
BHMA	605	609	613	619	625	626

#### Finishes *aluminum*

Ives Number	A3*	A15*	PA28
BHMA	666	670	628

\* only available 3" bolt Schlage Carded.



Meets ANSI/BHMA A156.16

253     **Decorative Surface Bolt**

- Heavy duty, decorative bolt ideal where extra strength required
- Decorative 1-1/4" diameter knob fits well with any décor and designed to facilitate bolt operation.
- Made from solid brass.
- Available in 8" and 12" lengths.
- Packed Universal Strike (US) & Mortise Strike (MS).

**Dimensions**

Throw: 1-1/8"  
Projection: 1-5/16"  
Half Round Rod: 5/8"  
Overall Width: 1-5/8"  
Length: 8" or 12"

**Finishes**

Ives Number	B3	B10B	B26D
BHMA	605	613	626

A  
Hinges & Pivots

B  
Pulls & Plates

C  
Flush Bolts & Coordinators

D5  
Latches, Catches & Bolts

E  
Stops

F  
Exterior Hardware

G  
Miscellaneous Hardware

A

Hinges & Pivots

B

Pulls & Plates

C

Flush Bolts & Coordinators

D6

Latches, Catches & Bolts

E

Stops

F

Exterior Hardware

G

Miscellaneous Hardware



Meets ANSI/BHMA A156.16.

### 054 Dutch Door Bolt

- Practical, rugged, attractive bolt for application on dutch doors as well as other areas.
- Chamfered rod end draws the two leaves of door tightly together.
- Sufficient tolerance provided in strike opening to allow for misalignment of door leaves and also prevents binding of bolt.
- Decorative 1" diameter knob designed to facilitate bolt operation.
- Made from solid brass.
- Packed with Standard Strike (SS), Mortise Strike (MS) and Universal Strike (US).

#### Dimensions

Throw: 5/8"

Projection: 1-1/8"

Half Round Rod: 5/8"

Overall Width: 1-5/8"

Rod Length: 4-1/4"

Overall Length: Specify 4-3/8" (Including Knob)

#### Finishes

Ives Number	B3	B4	B10	B10B	B15	B26	B26D
BHMA	605	606	612	613	619	625	626



Meets ANSI/BHMA A156.16.

### S48 Mortise Door Bolt

- Brass oval turn knob and escutcheon.
- Steel bolt for extra strength.
- Rack is milled for precision fit with pinion.

#### Dimensions

Backset: 1-3/4"

Bolt Throw: 1/2"

Bolt Diameter: 1/2"

Case: 2-1/2" Long x 9/16" diameter

Strike: 1-3/4" High x 7/8" Wide

#### Finishes *brass*

Ives Number	B3	B5	B10B	B15	B26	B26D
BHMA	605	609	613	619	625	626



Meets ANSI/BHMA A156.16

## 481 Chain Door Guard

- Permits the door to be slightly opened to allow viewing.
- Narrow chain holder maintains chain in stationary position when door guard is not in use, eliminating marring of door and frame caused by dangling chain.
- Welded twist link steel chain finished to match door plate and chain holder.
- Made from wrought brass or burnished wrought steel.
- Packed with sheet metal screws.

### Dimensions

Door Plate: 3-3/8" Long x 1-7/16" Wide

Chain Holder: 1-10/16" High x 3/4" Wide

Chain Length: 4-3/4"

### Finishes *brass*

Ives Number	B3	B26D
BHMA	605	626

### Finishes *steel*

Ives Number	F3	F4	F5	F10	F15	F26	F26D	F716
BHMA	632	633	638	639	646	651	652	



Meets ANSI/BHMA A156.16

## 482 Solid Bar Door Guard

- For use on doors that are flush with frames.
- The solid bar, interlocking with the ball on the strike plate, permits the door to be slightly opened to allow viewing.
- The hinged bar allows the door guard to be positioned 180° away from the door when not in use.
- Edge guard only, furnished with cast brass door guards, minimizes the chance for marring the door or frame.
- Strike plate is designed to prevent the solid bar from marring the inside of the door when in use.
- Made from cast brass or cast aluminum.
- Packed with sheet metal screws.
- Shims available in US26D (626) only, 1/8" or 3/8". Only fits 482B.

### 482B Cast Brass Dimensions

Strike Plate: 2-5/8" High x 1-1/32" Wide

Holder: 1-3/4" High x 1-1/16" Wide

Arm Length: 4-3/4"

Edge Guard: 1-1/8" High x 1-1/32" Wide

### Finishes *brass*

Ives Number	B3	B4	B10	B10B	B15	B26	B26D
BHMA	605	606	612	613	619	625	626

### Finishes *aluminum*

Ives Number	A3	A5	A26	A26D
BHMA	666		672	702

### 482A Cast Aluminum Dimensions

Strike Plate: 2-1/2" High x 7/8" Wide

Holder: 2-1/2" High x 15/16" Wide

Arm Length: 3-13/16"

A

Hinges & Pivots

B

Pulls & Plates

C

Flush Bolts & Coordinators

D8

Latches, Catches & Bolts

E

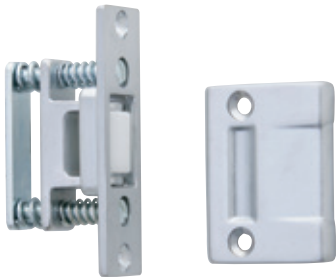
Stops

F

Exterior Hardware

G

Miscellaneous Hardware



Meets ANSI/BHMA A156.16, E19091

RL30 Roller Latch

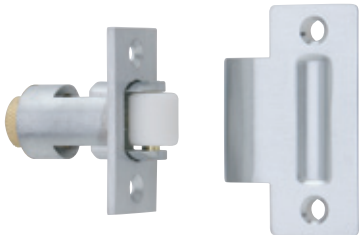
- Actuation is simple, closing of the door causes the roller to fall in the depression of the strike, thereby holding the door closed.
- The projection of the roller is easily adjusted using adjusting screws on the face of the unit.
- Maximum projection of the roller is 3/8" allowing for variance in the door clearance.
- Nylon Roller Standard.
- Forged Brass Construction.
- Optional Strike—A—ASA.
- Optional— F — Brass Roller, must be ordered separately.

Dimensions

Body: 1" Wide x 3-3/8" High x 1-11/16" Deep  
Strike: 1-11/16" Wide x 2-1/4" High x 5/32" Thick, Lip to Center- 1-5/16"  
Optional ASA Strike: 1-1/4" Wide x 4-7/8" High x 3/32" Thick, Lip to Center- 1-1/4"

Finishes *brass*

Ives Number	US3	US4	US10	US10B	US26	US26D
BHMA	605	606	612	613	625	626



Meets ANSI/BHMA A156.16, E19091

RL32 Roller Latch

- Actuation is simple, closing of the door causes the roller to fall in the depression of the strike, thereby holding the door closed.
- The projection of the roller is easily adjusted by turning knurled knob on back of latch.
- Maximum projection of the roller is 1/2" allowing for variance in the door clearance.
- Fits heavy-duty cylindrical lock cutout.
- Nylon Roller Standard.
- Non-handed.
- Brass Construction.
- Optional Strike—A—ASA.

Dimensions

Body: 1-1/8" Wide x 2-1/4" High x 2-1/4" Deep  
Strike: 1-1/8" Wide x 2-3/4" High x 3/32" Thick, Lip to Center- 1-1/4"  
Optional ASA Strike: 1-1/4" Wide x 4-7/8" High x 3/32" Thick, Lip to Center- 1-1/4"

Finishes *brass*

Ives Number	US3	US4	US10	US10B	US26	US26D
BHMA	605	606	612	613	625	626





Meets ANSI/BHMA A156.16, L57082

### RL36 Roller Latch

- Actuation is simple, closing of the door causes the roller to fall in the depression of the strike, thereby holding the door closed.
- The projection of the roller is easily adjusted by turning slotted screw on back of latch.
- Maximum projection of the roller is 5/16" allowing for variance in the door clearance.
- Fits cylindrical lock cutout.
- Nylon Roller.
- Non-handed.
- Stainless Steel Construction.
- Optional Strike-A-ASA.

#### Dimensions

Body: 1" Wide x 2-1/4" High x 2" Deep

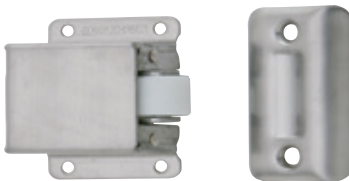
Strike: 1-1/8" Wide x 2-3/4" High x 3/32" Thick, Lip to Center- 1-1/4"

Optional ASA Strike: 1-1/4" Wide x 4-7/8" High x 3/32" Thick, Lip to Center- 1-1/4"

#### Finishes *Stainless Steel*

Ives Number US32D

BHMA 630



Meets ANSI/BHMA A156.16, L27092

### RL38 Roller Latch

- Actuation is simple, closing of the door causes the roller to fall in the depression of the strike, thereby holding the door closed.
- The projection of the roller is easily adjusted by turning slotted screw.
- Maximum projection of the roller is 3/8" allowing for variance in the door clearance.
- Nylon Roller.
- Non-handed.
- Stainless Steel Construction.

#### Dimensions

Body: 1-3/8" Wide x 2" High x 7/8" Deep

Strike: 1" Wide x 2-1/8" High x 3/8" Deep

#### Finishes *Stainless Steel*

Ives Number US32D

BHMA 630

A  
Hinges & Pivots

B  
Pulls & Plates

C  
Flush Bolts & Coordinators

D9  
Latches, Catches & Bolts

E  
Stops

F  
Exterior Hardware

G  
Miscellaneous Hardware

A

Hinges & Pivots

B

Pulls & Plates

C

Flush Bolts & Coordinators

D10

Latches, Catches & Bolts

E

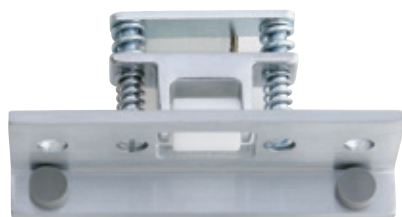
Stops

F

Exterior Hardware

G

Miscellaneous Hardware



Meets ANSI/BHMA A156.16, E19111

### RL1152

### Roller Latch

- Combination of RL30 Roller Latch and Angle Stop.
- Actuation is simple, closing of the door causes the roller to fall in the depression of the strike, thereby holding the door closed.
- The projection of the roller is easily adjustable using adjusting screws on the face of the unit.
- Maximum projection of the roller is 3/8" allowing for variance in the door clearance.
- Nylon Roller Standard.
- Forged Brass Construction.
- Optional— F — Brass Roller, must be ordered separately.

### Dimensions

Body: 1-1/2" Wide x 4-1/2" High x 1-3/4" Deep with 3/4" Angle

Strike: 1-1/8" Wide x 2-1/4" High x 5/32" Thick

### Finishes

Ives Number	US3	US4	US10	US10B	US26	US26D
BHMA	605	606	612	613	625	626

## Optional Strike

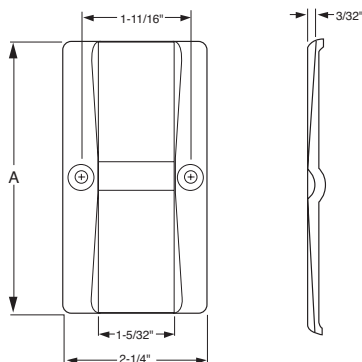
### STK685

### Strike

- Custom make strike for doors that swing both directions. For use with roller latches.
- Constructed of 3/32" brass.
- Dimple of strike centered on strike.
- Specify frame depth - A. Overall strike length will be A + 3/8" to accommodate 3/16" lip on each side

### Finishes

Ives Number	US3	US4	US10	US10B	US26	US26D
BHMA	605	606	612	613	625	626



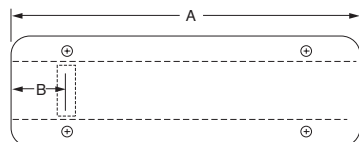
### STK685L

### Strike

- Custom make strike for doors that swing both directions. For use with roller latches.
- Constructed of 3/32" brass.
- Location of strike dimple is variable. Please specify frame depth - A and location of dimple from edge of frame - B. Dimple will be located B + 3/16" to accommodate lip.
- Specify frame depth - A. Overall strike length will be A + 3/8" to accommodate 3/16" lip on each side

### Finishes

Ives Number	US3	US4	US10	US10B	US26	US26D
BHMA	605	606	612	613	625	626



**AS895 Angle Stop**

- Surface applied stop for single doors.
- Large rubber bumper to ensure quiet operation.
- Constructed of 1/8" Brass Angle.

**Dimensions**

1-1/2" Wide x 1" Angle x 2-1/2" Long

**Finishes**

Ives Number	US3	US4	US10	US10B	US26	US26D
BHMA	605	606	612	613	625	626

**AS18 Angle Stop**

- Surface applied stop for single and double doors.
- Includes SR64 door silencers to ensure quiet operation. SR64 silencers are replaceable.
- Constructed of 3/16" Brass Angle.

**Dimensions**

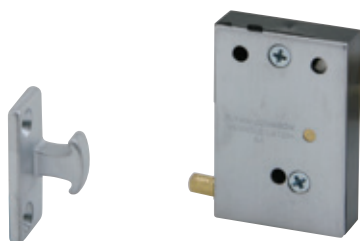
1-1/2" Wide x 3/4" Angle x 3-1/2" Long

**Finishes**

Ives Number	US3	US4	US10	US10B	US26	US26D
BHMA	605	606	612	613	625	626

**A**

Hinges &amp; Pivots



Meets ANSI/BHMA 156.9, B03272

## CL11 Invisible Latch

- Invisible latch is ideal for installations where no visible latch is desired.
- Unit can be installed at the top, bottom or side of the door.
- Can be mortised into the stop or surface mounted to the stop.
- Recommended for use on small panels, cabinet doors or light weight closet doors.
- Operation is simple, latching is accomplished by a slight push. To unlatch the door, a harder push releases the door and pushes the door out.
- Brass and plastic construction.
- Applies 13 pounds to open the door.

### Dimensions

Body: 1-1/4" Wide x 1-7/8" High x 7/16" Thick

Strike: 9/16" Wide x 1-5/16" High x 9/16" High

### Finishes

Ives Number	US3	US4	US10	US26D
BHMA	605	606	612	626

**B**

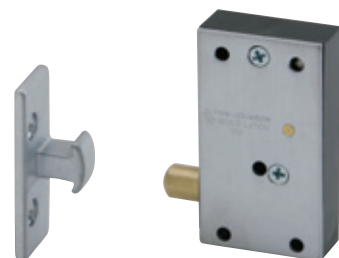
Pulls &amp; Plates

**C**

Flush Bolts &amp; Coordinators

**D12**

Latches, Catches &amp; Bolts



Meets ANSI/BHMA A156.9, B03272

## CL12 Invisible Latch

- Invisible latch is ideal for installations where no visible latch is desired.
- Unit can be installed at the top, bottom or side of the door.
- Can be mortised into the stop or surface mounted to the stop.
- Recommended for use on larger panels or regular size doors.
- Operation is simple, latching is accomplished by a slight push. To unlatch the door, a harder push releases the door and pushes the door out.
- Brass and plastic construction.
- Applies 27 pounds to open the door.

### Dimensions

Body: 1-1/4" Wide x 2-1/4" High x 9/16" Thick

Strike: 5/8" Wide x 1-13/16" High x 9/16" Projection

### Finishes

Ives Number	US3	US4	US10	US26D
BHMA	605	606	612	626

**E**

Stops

**F**

Exterior Hardware



Meets ANSI/BHMA A156.9, B13282

## CL14 Auxiliary Pusher

- Aid in the operation of the CL11 and CL12 where hinges or surrounding conditions prevent smooth operation of doors.
- Provides 1-1/16" throw.
- Nylon pusher.
- Brass construction.
- Applies 10 pounds to open the door.

### Dimensions

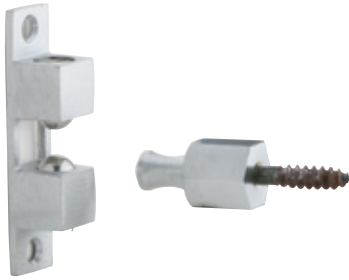
Body: 2-15/16" Long x 1-11/16" Wide x 5/8" Deep

### Finishes

Ives Number	US3	US4	US10	US26D
BHMA	605	606	612	626

**G**

Miscellaneous Hardware



Meets ANSI/BHMA A156.9

### CL21 Ball Catch

- Four-way catch with hexagon stud.
- Ideal for holding medium duty doors.
- The strike slides between two stainless steel balls that are under spring tension. As the strike engages, the door is held tightly shut.
- Strike can enter body from any direction.
- Spring tension is easily adjusted to suit field conditions.
- Body can be surface applied or mortised.
- Brass construction.

#### Dimensions

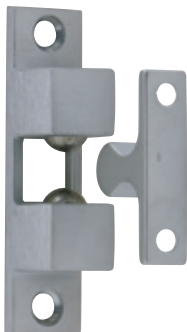
Body: 3/4" Wide x 3" High x 3/4" Deep

Strike: 3/4" Wide Hex x 1-1/2" High

#### Finishes *brass*

Ives Number US26D

BHMA 626



Meets ANSI/BHMA A156.9, B13292

### CL21A Ball Catch

- Four-way catch with plate type strike.
- Ideal for closet doors, access doors, hinged openings and numerous other applications.
- The strike slides between two stainless steel balls that are under spring tension. As the strike engages, the door is held tightly shut.
- Strike can enter body from any direction.
- Spring tension is easily adjusted to suit field conditions.
- Body can be surface applied or mortised.
- Brass construction.

#### Dimensions

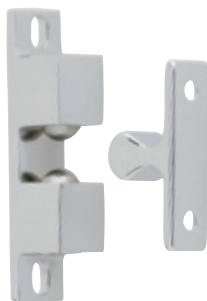
Body: 3/4" Wide x 3" High x 3/4" Deep

Strike: 7/16" Wide x 1-3/4" High x 7/8" Deep

#### Finishes *brass*

Ives Number US3 US4 US10 US26 US26D

BHMA 605 606 612 625 626



Meets ANSI/BHMA 156.9, B13302.

### CL22 Ball Catch

- Three-way catch with plate type strike.
- Ideal for smaller cabinet doors or panels.
- The strike slides between two stainless steel balls that are under spring tension. As the strike engages, the door is held tightly shut.
- Strike can enter body from either side or front.
- Spring tension is easily adjusted to suit field conditions.
- Body can be surface applied or mortised.
- Brass construction.

#### Dimensions

Body: 1/2" Wide x 2-3/16" High x 1/2" Deep

Strike: 3/8" Wide x 1-3/8" High x 5/8" Deep

#### Finishes *brass*

Ives Number US3 US4 US10 US26 US26D

BHMA 605 606 612 625 626

A

Hinges & Pivots



Meets ANSI/BHMA A156.9 B43171.

B

Pulls & Plates

C

Flush Bolts & Coordinators



Meets ANSI/BHMA A156.9 B43161.

D14

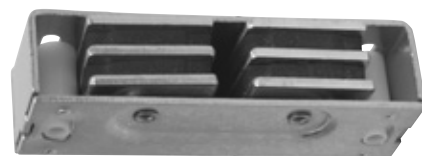
Latches, Catches & Bolts

E

Stops

F

Exterior Hardware



Meets ANSI/BHMA A156.9 B43161.

G

Miscellaneous Hardware

### 325

### Magnetic Catch

- Double pole.
- Self aligning magnet insures maximum pull.
- Case design allows easy magnet adjustment on cabinet or small door applications.
- Aluminum case.
- Packed with sheet metal screws.
- 5 lbs. Load Capacity

#### Dimensions

Case: 1-1/8" wide x 2-1/16" Long x 5/8" Thick

#### Finishes *aluminum*

Ives Number	A3	A92
BHMA	666	673

### 326

### Mighty-Mite® Heavy Duty Magnetic Catch

- Dual double pole.
- Self-aligning magnets insure maximum pull.
- Can be surface mounted or mortised.
- Aluminum case.
- Packed with sheet metal screws, 2 short strikes and 1 long strike.
- 9 lbs. Load Capacity

#### Dimensions

Case: 1" Wide x 3-1/8" Long x 9/16" Thick

#### Finishes *aluminum*

Ives Number	A3	A92
BHMA	666	673

### 327

### Super-Mite® Heavy Duty Magnetic Catch

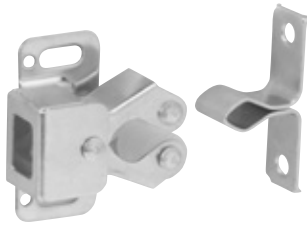
- Dual triple pole.
- Self-aligning magnets insure maximum pull.
- Can be surface mounted or mortised.
- Aluminum case.
- Packed with sheet metal screws, 2 short strikes and 1 long strike.
- 14 lbs. Load Capacity

#### Dimensions

Case: 1" Wide x 3-1/8" Long x 3/4" Thick

#### Finishes *aluminum*

Ives Number	A3	A92
BHMA	666	673



Meets ANSI/BHMA A156.9 B83071.

### 330 Roller Catch

- Independent rollers allow positive action and self-alignment.
- Cushioned rollers absorb shock and noise, hold door away from cabinet.
- Application allows for easy adjustment.
- Made from wrought steel.
- Packed with screws and brads.

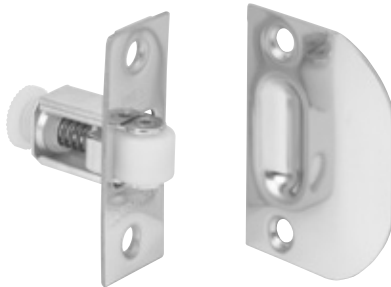
#### Dimensions

Case: 1-1/4" High x 11/16" Wide

Strike: 1-1/4" High x 3/8" Wide

#### Finishes

Ives Number	F2C
BHMA	603



Meets ANSI/BHMA A156.16 L27081 for brass and L87081 for steel.

### 335 Roller Catch

- Smooth, positive latching action insured by powerful conical spring.
- Durable nylon roller insures quiet operation.
- Adjustable tension. Adjustments can be varied from 4 to 17 lbs. of holding power making possible a wide range of door performance.
- Easily installed on thin doors.
- Full lip style strike designed for simplified mortising.
- Made from wrought brass or wrought steel.
- Packed with sheet metal screws.

#### Dimensions

Face Plate: 7/8" Wide x 2-1/4" High

Bore: 1-3/4" Deep x 13/16" Diameter

Strike: 1-5/8" Wide x 2-1/4" High, Lip to center- 1-3/16"

#### Finishes

Ives Number	B3	B5	B10	B10B	B15	B26	B26D
BHMA	605	609	612	613	619	625	626

### 336 Roller Catch

- Smooth, positive latching action insured by powerful conical spring.
- Durable nylon roller insures quiet operation.
- Adjustable tension. Adjustments can be varied from 4 to 17 lbs. of holding power making possible a wide range of door performance.
- Easily installed on thin doors.
- Standard box type strike designed for neat appearance.
- Made from wrought brass or wrought steel.
- Packed with sheet metal screws.

#### Dimensions

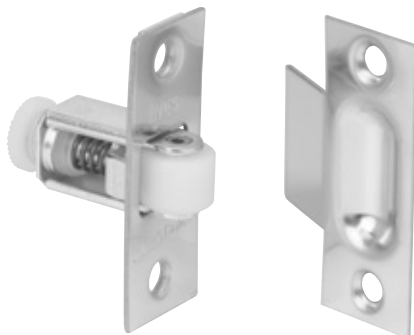
Face Plate: 7/8" Wide x 2-1/4" High

Bore: 13/16" Diameter x 1-3/4" Deep

Strike: 7/8" Wide x 2-1/4" High, Lip to center- 1-1/8"

#### Finishes

Ives Number	B3	B4	B5	B10	B10B	B15	B26	B26D
BHMA	605	606	609	612	613	619	625	626



Meets ANSI/BHMA A156.16 L27081 for brass and L87801 for steel.

A  
Hinges & Pivots

B  
Pulls & Plates

C  
Flush Bolts & Coordinators

D15  
Latches, Catches & Bolts

E  
Stops

F  
Exterior Hardware

G  
Miscellaneous Hardware

A

Hinges & Pivots

B

Pulls & Plates

C

Flush Bolts & Coordinators

D16

Latches, Catches & Bolts

E

Stops

F

Exterior Hardware

G

Miscellaneous Hardware



Meets ANSI/BHMA A156.9 B23013.

### 345

#### Adjustable Ball Catch

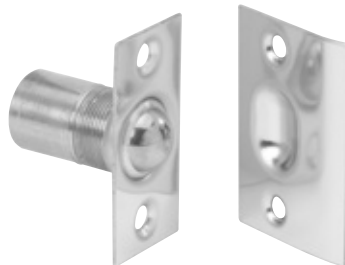
- Ideal for cabinets and small interior doors.
- Free rolling ball insures smooth, positive and trouble-free action.
- Adjustable threaded barrel compensates for various door clearances.
- Adjustable spring tension.
- Made from wrought brass.

#### Dimensions

Face Plate: 3/4" Wide x 1-1/2" High  
Bore: 1" Deep x 9/16" Diameter  
Strike: 25/32" Wide x 1-1/2" High, Lip to center- 13/32"

#### Finishes *brass*

Ives Number	B3	B5	B10	B10B	B15	B26	B26D
BHMA	605	609	612	613	619	625	626



Meets ANSI/BHMA A156.9 B23013.

### 347

#### Dual Adjustable Ball Catch

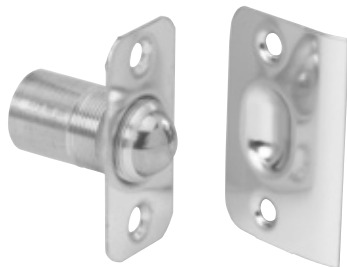
- For catch in door installations.
- Dual adjustment for door clearance and holding strength.
- Lip strike is designed for use where strike is mounted in jamb.
- Free rolling ball insures smooth, positive and trouble-free action.
- Adjustable threaded barrel compensates for various door clearances.
- Adjustable spring tension.
- Made from wrought brass.

#### Dimensions

Face Plate: 1" Wide x 2-1/8" High  
Bore: 7/8" Diameter x 1-3/8" Deep  
Strike: 1-3/8" Wide x 2-1/8" High, Lip to center- 7/8"

#### Finishes *brass*

Ives Number	B3	B4	B5	B10	B10B	B15	B26	B26D
BHMA	605	606	609	612	613	619	625	626



Meets ANSI/BHMA A156.9 B23013.

### 349

#### Ball Catch

- For catch in door installations.
- Radiused corners allow easy installation with a router.
- Dual adjustment for door clearance and holding strength.
- Lip strike is designed for use where strike is mounted in jamb.
- Free rolling ball insures smooth, positive and trouble-free action.
- Adjustable threaded barrel compensates for various door clearances.
- Adjustable spring tension.
- Made from wrought brass.

#### Dimensions

Face Plate: 1" Wide x 2-1/8" High  
Bore: 7/8" Diameter x 1-3/8" Deep  
Strike: 1-3/8" Wide x 2-1/8" High, Lip to center- 7/8"

#### Finishes *brass*

Ives Number	B3	B4	B5	B10	B10B	B15	B26	B26D	B716
BHMA	605	606	609	612	613	619	625	626	