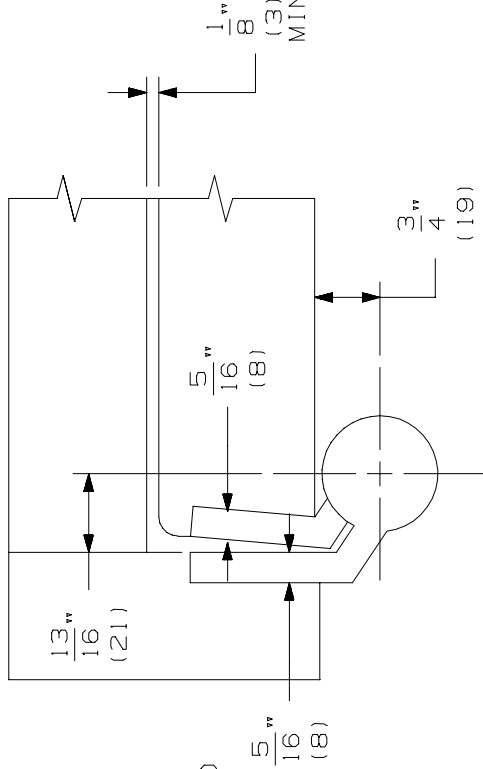
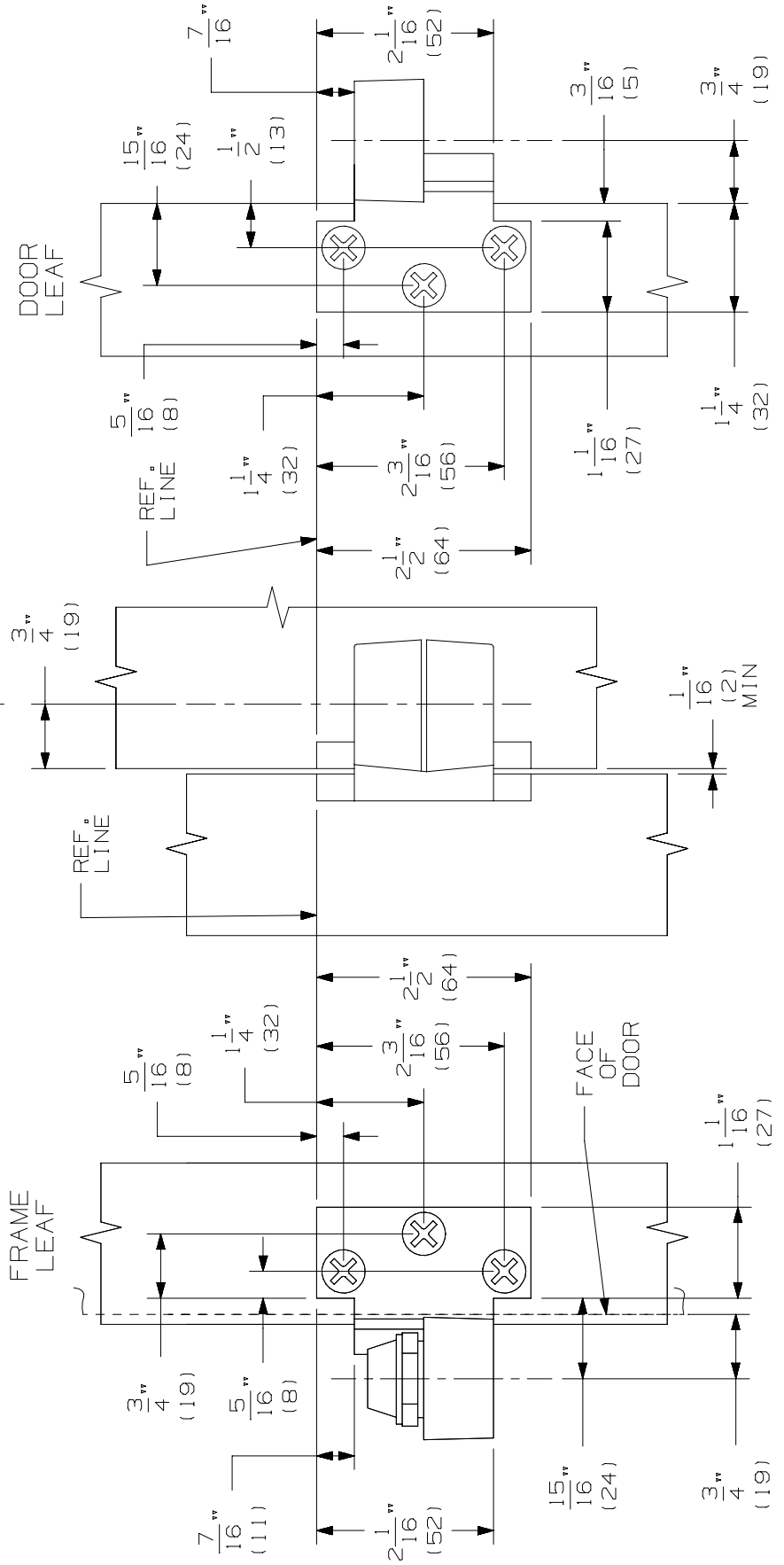


RIGHT HAND DOOR & PIVOT SHOWN. LEFT HAND OPPOSITE.



- NOTES:
1. INSTALLER MUST VERIFY THAT CENTERLINE OF INTERMEDIATE PIVOT IS IN LINE WITH TOP AND BOTTOM PIVOTS.
 2. PIVOT SET IS HANDED. RIGHT HAND TEMPLATING SHOWN. LEFT HAND OPPOSITE.
 3. HEEL EDGE OF DOOR MUST BE BEVELED 1/8" IN 2".
 4. PIVOTS MANUFACTURER TO ACCEPT 1/4-20 X 3/4 FPHMS OR #14 X 1 1/2" FPHMS.
 5. VERTICAL LOCATION OF INTERMEDIATE PIVOT SHOULD BE EQUALLY SPACED BETWEEN TOP & BOTTOM PIVOT SETS.
 6. REINFORCING PER ANSI/SDI-100 RECOMMENDED FOR HOLLOW METAL DOORS & FRAMES.



IVES

**7212 INTERMEDIATE PIVOT
USED WITH PIVOTS SETS
7212, 7212V & 7222**

ALLEGION

© 2015 Allegion
INST_7212I
Rev. 01/15-b

NOTE: DIMENSIONS IN () ARE IN MILLIMETERS

TEMPLATE NUMBER: **INST.7212I_B**