



Most people in the North American door hardware industry are familiar with ANSI - American National Standards Institute, BHMA - Builders Hardware Manufacturers Association, along with UL - Underwriters Laboratories and Intertek. However these standards and fire codes, which are strictly enforced in the United States and Canada, are not customary in approximately 90% of the rest of the world.

European standards - EN and CE - are dominant in Europe, the Middle East and most of Asia. Any hardware products sold into areas that embrace these standards must meet their cycle and fire tests, which are completely different than those of ANSI and UL.

Hager Companies launched the Euroline in 2008 to provide a comprehensive product line that meets and exceeds EN and CE standards. It currently consists of a complete product portfolio including hinges, trim & auxiliary, door controls, exit devices, mortise locks, cylinders, levers, and accessories.

Since the product line has expanded and Hager Companies has been successful in marketing in Latin America, the Middle East and Asia. In addition, our Euroline products recently passed separate stringent fire tests in Mainland China.

As always, service is our number one priority and that is true for our global customers as well. We have representatives across the globe as well as distribution centers in Dubai, United Arab Emirates and Zhuhai, China.

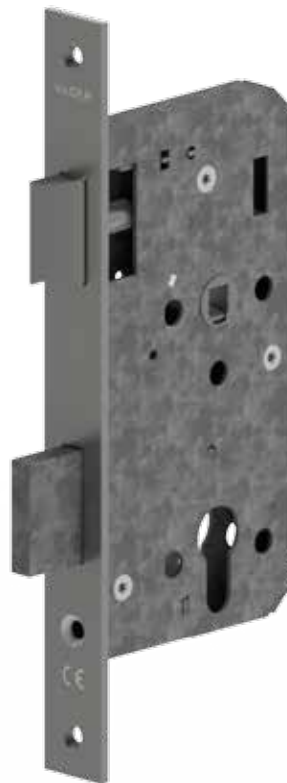
## Table of Contents

<b>Locks .....</b>	<b>5</b>	<b>Exits.....</b>	<b>31</b>
Lock Functions.....	6		
Lock Bodies .....	9	<b>Patch Fittings .....</b>	<b>35</b>
Lever Options - Locks .....	13		
Trim – Locks .....	21	<b>Commercial Hinges .....</b>	<b>39</b>
Cylinders .....	23		
		<b>Trim &amp; Auxiliary .....</b>	<b>41</b>
<b>Door Controls .....</b>	<b>25</b>		
Surface Door Closers.....	26		
Surface Door Closers - Accessories .....	27		
Concealed Door Closers.....	28		
Floor Springs .....	29		

# Locks

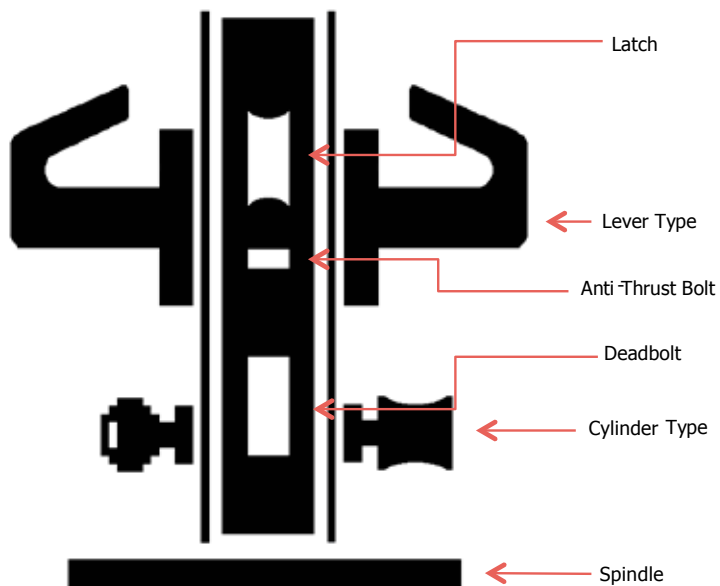


European locksets are sold in component form: lock body, lever set and cylinder. This allows end users to mix and match cylinders, levers and lock bodies from a vast array of different manufacturers. It also allows multiple mechanical and electronic keyways to be used interchangeably. This modular approach allows for greater flexibility on the jobsite. Consult the diagram and charts on the next three pages to see function options and the components required.

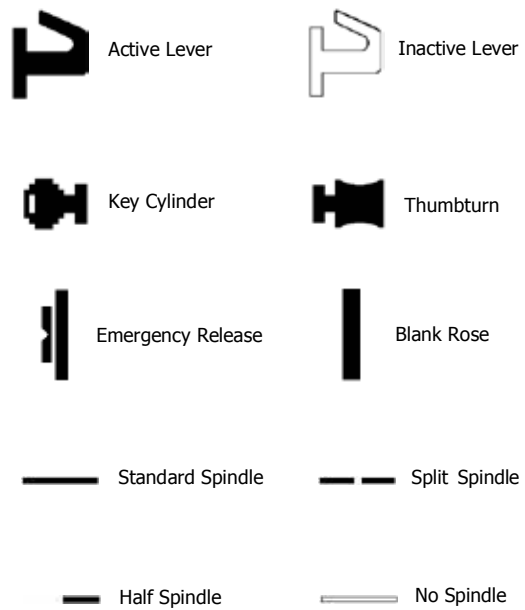


## LOCK FUNCTIONS

### Lock Components











### Symbol Key





## LOCK FUNCTIONS

Picture	Function	Function Description	Required Parts
	Passage	Latchbolt operated by lever from either side at all times.	3800U-55L Leverset
	Bathroom Indicator	Latchbolt operated by lever from either side at all times. Deadbolt operated by thumbturn from inside and by emergency release with indicator from outside.	3800U-55B Leverset 2-669-0736
	Privacy	Latchbolt operated by lever from either side at all times. Deadbolt operated by thumbturn from inside and by emergency release from outside.	3800U-55S Leverset 3000R
	Classroom	Latchbolt operated by lever from either side. Deadbolt operated by key from outside. Operating inside lever retracts both latchbolt and deadbolt simultaneously.	3800U-55P Leverset Split Spindle* 3000H
	Storeroom	Latchbolt operated by key from outside or by operating inside lever. Outside lever never retracts latch.	3800U-55M Leverset Half Spindle** 3000H
	Security Storeroom	Latchbolt operated by key from outside or by operating inside lever. Outside lever never retracts latch. Auxiliary dead latch.	3800U-55T Leverset Half Spindle** 3000H
	Exit	Latchbolt operated by lever from either side. Deadbolt operated by key from outside and by thumbturn from inside. Operating inside lever retracts both latchbolt and deadbolt simultaneously.	3800U-55P Leverset Split Spindle* 3000C
	Entrance	Latchbolt operated by lever from either side. Deadbolt operated by key from either side.	3800U-55S Leverset 3000D

\* Use the split spindle in place of the spindle that comes with the leverset.









\*\* Use the half spindle going into the inside lever in place of the spindle that comes with the leverset.

\*\*\* Do not install the spindle that comes with the leverset.





## LOCK FUNCTIONS

Picture	Function	Function Description	Required Parts
	Bedroom	Latchbolt operated by lever from either side. Deadbolt operated by thumbturn from inside and emergency release from outside. Operating inside lever retracts both latchbolt and deadbolt simultaneously.	3800U-55P Leverset Split Spindle* 3000R
	Dormitory	Latchbolt operated by lever from either side. Deadbolt operated by key from outside and thumbturn from inside.	3800U-55S Leverset 3000C
	Institutional	Latchbolt operated by key from either side. Neither lever retracts latch.	3800U-55M Leverset*** 3000D
	Security Institutional	Latchbolt operated by key from either side. Neither lever retracts latch. Auxiliary dead latch.	3800U-55T Leverset*** 3000D
	Security Classroom	Latchbolt operated by lever from either side. Deadbolt operated by key from inside or outside. Operating inside lever retracts both latchbolt and deadbolt simultaneously.	3800U-55P Leverset Split Spindle* 3000D
	Double Deadbolt	Deadbolt operated by key from either side. No latch.	3800U-55F 3000D
	Privacy Deadbolt	Deadbolt operated by key from outside and by thumbturn from inside. No latch.	3800U-55F 3000C
	Single Deadbolt	Deadbolt operated by key from outside only. No latch.	3800U-55F 3000H

\* Use the split spindle in place of the spindle that comes with the leverset.

\*\* Use the half spindle going into the inside lever in place of the spindle that comes with the leverset.

\*\*\* Do not install the spindle that comes with the leverset.





## LOCK BODIES



### 3800U-H Series

#### Sliding Door Mortise Lock

Warranty:	Three-year
Backset:	<ul style="list-style-type: none"> <li>• 20 mm - 3800U-20H</li> <li>• 60 mm - 3800U-60H</li> </ul>
Forend Length:	<ul style="list-style-type: none"> <li>• 179.3 mm - 3800U-20H</li> <li>• 169.3 mm - 3800U-60H</li> </ul>
Forend Width:	22 mm
Deadbolt Length:	<ul style="list-style-type: none"> <li>• 16 mm - 3800U-20H</li> <li>• 18 mm - 3800U-60H</li> </ul>
Strike Length:	104 mm
Strike Width:	22 mm
Material:	Steel
Finish:	US32D
Fasteners:	Four (4) 3.5 mm x 25 mm FPHWS
Includes:	Mortise lock, strike plate, and fixing screws
Notes:	3 mm forend round corners available upon request



### 3800U-55B

#### Bathroom Mortise Lock

Warranty:	Three-year
Certifications:	<ul style="list-style-type: none"> <li>• EN 12209: 2003 / EN1634 -1: 2000 (4-Hour Fire-Rated)</li> <li>• CE Classification 3X510F-BG20</li> <li>• CertiFire CF 5283</li> </ul>
Backset:	55 mm
Center to Center:	78 mm
Forend Length:	235 mm
Forend Width:	24 mm
Deadbolt Throw:	20 mm
Latchbolt Throw:	12.5 mm
Strike Length:	172 mm
Strike Width:	24 mm
Strike Width w/ Lip:	39 mm
Finish:	US32D
Fasteners:	Two (2) 4 mm x 25 mm FPHWS and three (3) 3.5 mm x 20 mm FPHWS
Includes:	Mortise lock body, strike plate, and fixing screws
Notes:	<ul style="list-style-type: none"> <li>• Cylinders and levers sold separately</li> <li>• Field reversible, non-handed</li> <li>• 3 mm forend round corners available upon request</li> </ul>



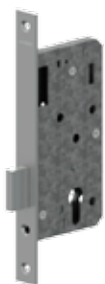
### 3800U-55D

#### Deadlock Small Mortise Lock

Warranty:	Three-year
Backset:	55 mm
Forend Length:	150 mm
Forend Width:	24 mm
Deadbolt Throw:	22 mm
Strike Length:	90 mm
Strike Width:	24 mm
Material:	Steel
Finish:	US32D
Fasteners:	Four (4) 3.5 mm x 25 mm
Includes:	Mortise lock, strike plate, and fixing screws
Notes:	<ul style="list-style-type: none"> <li>• Cylinders and levers sold separately</li> <li>• Field reversible, non-handed</li> <li>• 3 mm forend round corners available upon request</li> </ul>



## LOCK BODIES



### **3800U-55F** **Deadbolt Mortise Lock**

Warranty:

Certifications:

Backset:

Forend Length:

Forend Width:

Deadbolt Throw:

Strike Length:

Strike Width:

Finish:

Fasteners:

Includes:

Notes:

Three-year

- EN12209: 2003 / EN1634-1: 2000 (4-Hour Fire-Rated)
- CE Classification 3X510F3BC00
- CertiFire CF 5283

55 mm

235 mm

24 mm

20 mm

90 mm

24 mm

US32D

Two (2) each 4 mm x 25 mm FPHWS and 3.5 mm x 25 mm FPHWS

Mortise lock body, strike plate, and fixing screws

- Cylinders and levers sold separately
- 3 mm forend round corners available upon request



### **3800U-55L** **Latch Mortise Lock**

Warranty:

Certifications:

Backset:

Forend Length:

Forend Width:

Latchbolt Throw:

Strike Length:

Strike Width:

Strike Width w/ Lip:

Finish:

Fasteners:

Includes:

Notes:

Three-year

- EN 12209: 2003 / EN 1634-1: 2000 (4-Hour Fire-Rated)
- CE Classification 3X510F-B020
- CertiFire CF 5283

55 mm

235 mm

24 mm

12.5 mm

102 mm

24 mm

39 mm

US32D

Two (2) each 4 mm x 25 mm FPHWS and 3.5 mm x 19 mm FPHWS

Mortise lock body, strike plate, and fixing screws

- Levers sold separately
- Field reversible, non-handed
- 3 mm forend round corners available upon request



### **3800U-55M** **Nightlatch Mortise Lock**

Warranty:

Certifications:

Backset:

Center to Center:

Forend Length:

Forend Width:

Latchbolt Throw:

Strike Length:

Strike Width:

Strike Width w/ Lip:

Finish:

Fasteners:

Includes:

Notes:

Three-year

- EN 12209: 2003 / EN 1634-1: 2000 (4-Hour Fire-Rated)
- CE Classification 3X510F-B020
- CertiFire CF 5283

55 mm

72 mm

235 mm

24 mm

12.5 mm

102 mm

24 mm

39 mm

US32D

Two (2) each 4 mm x 25 mm FPHWS and 3.5 mm x 19 mm FPHWS

Mortise lock body, strike plate, and fixing screws

- Cylinders and levers sold separately
- Field reversible, non-handed
- 3 mm forend round corners available upon request
- To be used with half spindle (2-669-0732), sold separately





## LOCK BODIES



### 3800U-60N

#### Latch Small Mortise Lock

Warranty:	Three-year
Backset:	60 mm
Forend Length:	101.5 mm
Forend Width:	25.5 mm
Latchbolt Throw:	10 mm
Strike Length:	63.8 mm
Strike Width:	22.5 mm
Material:	Steel
Finish:	US32D
Includes:	Mortise lock, strike plate, and fixing screws
Fasteners:	Four (4) 3.5 mm x 25 mm FPHWS
Notes:	<ul style="list-style-type: none"> <li>• Levers sold separately</li> <li>• Field reversible, non-handed</li> <li>• 3 mm forend round corners available upon request</li> </ul>



### 3800U-55P

#### Anti-Panic Mortise Lock

Warranty:	Three-year
Certifications:	<ul style="list-style-type: none"> <li>• EN 179: 2008 / EN 1634-1: 2000 (4-Hour Fire-Rated)</li> <li>• CE Classification 376B1342A B/D</li> <li>• CertiFire CF 5283</li> </ul>
Backset:	55 mm
Center to Center:	72 mm
Forend Length:	235 mm
Forend Width:	24 mm
Latchbolt Throw:	12.5 mm
Deadbolt Throw:	20 mm
Strike Length:	172 mm
Strike Width:	24 mm
Strike Width w/ Lip:	39 mm
Finish:	US32D
Fasteners:	Two (2) 4 mm x 25 mm FPHWS and three (3) 3.5 mm x 19 mm FPHWS
Includes:	Mortise lock body, strike plate, and fixing screws
Notes:	<ul style="list-style-type: none"> <li>• Deadbolt retracts with latch when inside lever is turned to allow emergency exit</li> <li>• Cylinders and levers sold separately</li> <li>• Field reversible, non-handed</li> <li>• Must be used with 6802 lever for anti-panic compliance</li> <li>• 3 mm forend round corners available upon request</li> <li>• To be used with split spindles, 2-669-0733, sold separately</li> </ul>





## LOCK BODIES



### **3800U-55S**

#### **Sash Mortise Lock**

Warranty:

Certifications:

Backset:

Center to Center:

Forend Length:

Forend Width:

Deadbolt Length:

Latchbolt Length:

Strike Length:

Strike Width:

Strike Width with Lip:

Material:

Finish:

Includes:

Fasteners:

Notes:

Three-year

- EN 12209: 2003 / EN 1634-1: 2000 (4-Hour Fire-Rated)
- CE Classification 3X510F3BC20
- CertiFire CF 5283

55 mm

72 mm

235 mm

24 mm

20 mm

12.5 mm

172 mm

24 mm

39 mm

Steel

US32D

Mortise lock, strike plate, and fixing screws

Four (4) 3.5 mm x 25 mm FPHWS

- Cylinders and levers sold separately
- Field reversible, non-handed
- 3 mm forend round corners available upon request



### **3800U-55T**

#### **Nightlatch w/ Anti-Thrust Bolt Mortise Lock**

Warranty:

Certifications:

Backset:

Center to Center:

Forend Length:

Forend Width:

Latchbolt Throw:

Strike Length:

Strike Width:

Strike Width w/ Lip:

Finish:

Fasteners:

Includes:

Notes:

Three-year

- EN 12209: 2003 / EN 1634-1: 2000 (4-Hour Fire-Rated)
- CE Classification 3X510F2BB20
- CertiFire CF 5283

55 mm

72 mm

235 mm

24 mm

12.5 mm

102 mm

24 mm

39 mm

US32D

Two (2) 4 mm x 25 mm FPHWS and two (2) 3.5 mm x 19 mm FPHWS

Mortise lock body, strike plate, and fixing screws

- Cylinders and levers sold separately
- Field reversible, non-handed
- 3 mm forend round corners available upon request
- To be used with half spindle (2-669-0732), sold separately





## LEVER OPTIONS - LOCKS



### 6801

#### Tube Lever

Warranty:  
Lever Rose:  
Cylinder Rose:

Door Thickness:  
Material:  
Finish:  
Includes:

Three-year  
54 mm diameter  
• 54 mm diameter  
• 10 mm width  
35 mm to 50 mm  
Stainless steel  
US32D  
Two (2) levers, two (2) cylinder roses, and mounting hardware



### 6802

#### Tube Lever

Warranty:  
Lever Rose:  
Cylinder Rose:

Door Thickness:  
Material:  
Finish:  
Includes:

Three-year  
54 mm diameter  
• 54 mm diameter  
• 10 mm width  
35 mm to 50 mm  
Stainless steel  
US32D  
Two (2) levers, two (2) cylinder roses, and mounting hardware



### 6803

#### Tube Lever

Warranty:  
Lever Rose:  
Cylinder Rose:

Door Thickness:  
Material:  
Finish:  
Includes:

Three-year  
54 mm diameter  
• 54 mm diameter  
• 10 mm width  
35 mm to 50 mm  
Stainless steel  
US32D  
Two (2) levers, two (2) cylinder roses, and mounting hardware



### 6805

#### Tube Lever

Warranty:  
Lever Rose:  
Cylinder Rose:

Door Thickness:  
Material:  
Finish:  
Includes:

Three-year  
54 mm diameter  
• 54 mm diameter  
• 10 mm width  
35 mm to 50 mm  
Stainless steel  
US32D  
Two (2) levers, two (2) cylinder roses, and mounting hardware



## LEVER OPTIONS - LOCKS



### **6806**

#### **Tube Lever**

Warranty:

Lever Rose:

Cylinder Rose:

Door Thickness:

Material:

Finish:

Includes:

Three-year

54 mm diameter

- 54 mm diameter
- 10 mm width

35 mm to 50 mm

Stainless steel

US32D

Two (2) levers, two (2) cylinder roses, and mounting hardware



### **6807**

#### **Solid Lever**

Warranty:

Lever Rose:

Cylinder Rose:

Door Thickness:

Material:

Finish:

Includes:

Three-year

54 mm diameter

- 54 mm diameter
- 10 mm width

35 mm to 50 mm

Stainless steel

US32D

Two (2) levers, two (2) cylinder roses, and mounting hardware



### **6808**

#### **Solid Lever**

Warranty:

Lever Rose:

Cylinder Rose:

Door Thickness:

Material:

Finish:

Includes:

Three-year

54 mm diameter

- 54 mm diameter
- 10 mm width

35 mm to 50 mm

Stainless steel

US32D

Two (2) levers, two (2) cylinder roses, and mounting hardware



### **6809**

#### **Solid Lever**

Warranty:

Lever Rose:

Cylinder Rose:

Door Thickness:

Material:

Finish:

Includes:

Three-year

54 mm diameter

- 54 mm diameter
- 10 mm width

35 mm to 50 mm

Stainless steel

US32D

Two (2) levers, two (2) cylinder roses, and mounting hardware



## LEVER OPTIONS - LOCKS



### **6810** **Cast Hollow Lever**

Warranty:

Lever Rose:

Cylinder Rose:

Door Thickness:

Material:

Finish:

Includes:

Three-year

54 mm diameter

• 54 mm diameter

• 10 mm width

35 mm to 50 mm

Stainless steel

US32D

Two (2) levers, two (2) cylinder roses, and mounting hardware



### **6811** **Tube Lever**

Warranty:

Lever Rose:

Cylinder Rose:

Door Thickness:

Material:

Finish:

Includes:

Three-year

54 mm diameter

• 54 mm diameter

• 10 mm width

35 mm to 50 mm

Stainless steel

US32D

Two (2) levers, two (2) cylinder roses, and mounting hardware



### **6812** **Tube Lever**

Warranty:

Lever Rose:

Cylinder Rose:

Door Thickness:

Material:

Finish:

Includes:

Three-year

54 mm diameter

• 54 mm diameter

• 10 mm width

35 mm to 50 mm

Stainless steel

US32D

Two (2) levers, two (2) cylinder roses, and mounting hardware



### **6813** **Tube Lever**

Warranty:

Lever Rose:

Cylinder Rose:

Door Thickness:

Material:

Finish:

Includes:

Three-year

54 mm diameter

• 54 mm diameter

• 10 mm width

35 mm to 50 mm

Stainless steel

US32D/US32 dual polished

Two (2) levers, two (2) cylinder roses, and mounting hardware



## LEVER OPTIONS - LOCKS



### **6814** **Cast Hollow Lever**

Warranty:  
Lever Rose:  
Cylinder Rose:

Door Thickness:  
Material:  
Finish:  
Includes:

Three-year  
54 mm diameter  
• 54 mm diameter  
• 10 mm width  
35 mm to 50 mm  
Stainless steel  
US32/US32D dual polished  
Two (2) levers, two (2) cylinder roses, and mounting hardware



### **6815** **Solid Lever**

Warranty:  
Lever Rose:  
Cylinder Rose:

Door Thickness:  
Material:  
Finish:  
Includes:

Three-year  
54 mm diameter  
• 54 mm diameter  
• 10 mm width  
35 mm to 50 mm  
Stainless steel  
US32D  
Two (2) levers, two (2) cylinder roses, and mounting hardware



### **6816** **Cast Hollow Lever**

Warranty:  
Lever Rose:  
Cylinder Rose:

Door Thickness:  
Material:  
Finish:  
Includes:

Three-year  
54 mm diameter  
• 54 mm diameter  
• 10 mm width  
35 mm to 50 mm  
Stainless steel  
US32/US32D dual polished  
Two (2) levers, two (2) cylinder roses, and mounting hardware



### **6817** **Solid Lever**

Warranty:  
Lever Rose:  
Cylinder Rose:

Door Thickness:  
Material:  
Finish:  
Includes:

Three-year  
54 mm diameter  
• 54 mm diameter  
• 10 mm width  
35 mm to 50 mm  
Stainless steel  
US32D  
Two (2) levers, two (2) cylinder roses, and mounting hardware



## LEVER OPTIONS - LOCKS



### **6818 Solid Lever**

Warranty:  
Lever Rose:  
Cylinder Rose:

Door Thickness:  
Material:  
Finish:  
Includes:

Three-year  
54 mm diameter  
• 54 mm diameter  
• 10 mm width  
35 mm to 50 mm  
Stainless steel  
US32D  
Two (2) levers, two (2) cylinder roses, and mounting hardware



### **6819 Cast Hollow Lever**

Warranty:  
Lever Rose:  
Cylinder Rose:

Door Thickness:  
Material:  
Finish:  
Includes:

Three-year  
54 mm diameter  
• 54 mm diameter  
• 10 mm width  
35 mm to 50 mm  
Stainless steel  
US32/US32D dual polished  
Two (2) levers, two (2) cylinder roses, and mounting hardware



### **6820 Tube Lever**

Warranty:  
Lever Rose:  
Cylinder Rose:

Door Thickness:  
Material:  
Finish:  
Includes:

Three-year  
54 mm diameter  
• 54 mm diameter  
• 10 mm width  
35 mm to 50 mm  
Stainless steel  
US32D  
Two (2) levers, two (2) cylinder roses, and mounting hardware



### **6821 Tube Lever**

Warranty:  
Lever Rose:  
Cylinder Rose:

Door Thickness:  
Material:  
Finish:  
Includes:

Three-year  
54 mm diameter  
• 54 mm diameter  
• 10 mm width  
35 mm to 50 mm  
Stainless steel  
US32/32D dual polished  
Two (2) levers, two (2) cylinder roses, and mounting hardware



## LEVER OPTIONS - LOCKS

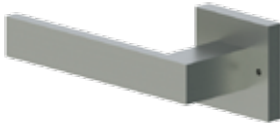


### **6822** **Solid Lever**

Warranty:  
Lever Rose:  
Cylinder Rose:

Door Thickness:  
Material:  
Finish:  
Includes:

Three-year  
54 mm diameter  
• 54 mm diameter  
• 10 mm width  
35 mm to 50 mm  
Stainless steel  
US32D  
Two (2) levers, two (2) cylinder roses, and mounting hardware



### **6823** **Solid Lever**

Warranty:  
Lever Rose:  
Cylinder Rose:  
Door Thickness:

Material:  
Finish:  
Includes:  
Notes:

Three-year  
52 mm x 52 mm x 10 mm  
52 mm x 52 mm x 10 mm  
35 mm to 50 mm  
Stainless steel  
US32D  
Two (2) levers, two (2) cylinder roses, and mounting hardware  
Must specify handing



### **6824** **Solid Lever**

Warranty:  
Lever Rose:  
Cylinder Rose:

Door Thickness:  
Material:  
Finish:  
Includes:

Three-year  
54 mm diameter  
• 54 mm diameter  
• 10 mm width  
35 mm to 50 mm  
Stainless steel  
US32D  
Two (2) levers, two (2) cylinder roses, and mounting hardware



### **6825** **Cast Hollow Lever**

Warranty:  
Lever Rose:  
Cylinder Rose:

Door Thickness:  
Material:  
Finish:  
Includes:

Three-year  
54 mm diameter  
• 54 mm diameter  
• 10 mm width  
35 mm to 50 mm  
Stainless steel  
US32D  
Two (2) levers, two (2) cylinder roses, and mounting hardware



## LEVER OPTIONS - LOCKS



### **6826 Solid Lever**

Warranty:  
Lever Rose:  
Cylinder Rose:

Door Thickness:  
Material:  
Finish:  
Includes:

Three-year  
54 mm diameter  
• 54 mm diameter  
• 10 mm width  
35 mm to 50 mm  
Stainless steel  
US32D  
Two (2) levers, two (2) cylinder roses, and mounting hardware

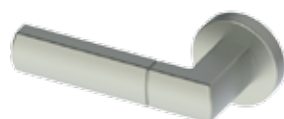


### **6827 Solid Lever**

Warranty:  
Lever Rose:  
Cylinder Rose:

Door Thickness:  
Material:  
Finish:  
Includes:

Three-year  
54 mm diameter  
• 54 mm diameter  
• 10 mm width  
35 mm to 50 mm  
Stainless steel  
US32D  
Two (2) levers, two (2) cylinder roses, and mounting hardware



### **6828 Cast Hollow Lever**

Warranty:  
Lever Rose:  
Cylinder Rose:

Door Thickness:  
Material:  
Finish:  
Includes:

Three-year  
54 mm diameter  
• 54 mm diameter  
• 10 mm width  
35 mm to 50 mm  
Stainless steel  
US32D  
Two (2) levers, two (2) cylinder roses, and mounting hardware



### **6829 Cast Hollow Lever**

Warranty:  
Lever Rose:  
Cylinder Rose:

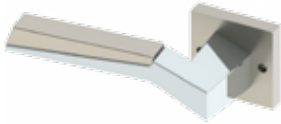
Door Thickness:  
Material:  
Finish:  
Includes:

Three-year  
54 mm diameter  
• 54 mm diameter  
• 10 mm width  
35 mm to 50 mm  
Stainless steel  
US32D  
Two (2) levers, two (2) cylinder roses, and mounting hardware





## LEVER OPTIONS - LOCKS



### 6830

#### Solid Lever

Warranty:

Lever Rose:

Cylinder Rose:

Door Thickness:

Material:

Finish:

Includes:

Notes:

Three-year

52 mm x 52 mm x 10 mm

52 mm x 52 mm x 10 mm

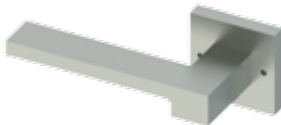
35 mm to 50 mm

Stainless steel

US32/US32D dual polished

Two (2) levers, two (2) cylinder roses, and mounting hardware

Must specify handing



### 6831

#### Solid Lever

Warranty:

Lever Rose:

Cylinder Rose:

Door Thickness:

Material:

Finish:

Includes:

Notes:

Three-year

52 mm x 52 mm x 10 mm

52 mm x 52 mm x 10 mm

35 mm to 50 mm

Stainless steel

US32D

Two (2) levers, two (2) cylinder roses, and mounting hardware

Must specify handing



### 6832

#### Solid Lever

Warranty:

Lever Rose:

Cylinder Rose:

Door Thickness:

Material:

Finish:

Includes:

Three-year

54 mm diameter

- 54 mm diameter

- 10 mm width

35 mm to 50 mm

Stainless steel

US32/US32D dual polished

Two (2) levers, two (2) cylinder roses, and mounting hardware





## TRIM - LOCKS



### 2-669-0644 Replacement Rose Kit

Application: For use with Euroline deadlock mortise locks  
 Material: Stainless steel  
 Finish: US32D  
 Dimensions: 54 mm diameter  
 10 mm width  
 Fasteners: Two (2) M4 x 60 mm FPHMS with sex nuts plus  
 four (4) 4 mm x 22 mm FPHWS



### 2-669-0645/2-669-1363 Lever Spindle Extension Kit

Application: For use on doors 50 mm thick to 63.5 mm thick  
 Models: 2-669-0645; used with circular rose levers  
 2-669-1363; used with square rose levers  
 Material: Steel  
 Includes: One (1) extension shaft and four (4) M4 x 75 mm screws with sex nuts



### 2-669-0735 Strike Dust Box

Application: For use with Euroline mortise lock strike plates  
 Material: Plastic (white)  
 Includes: One (1) dust box



### 2-669-0736 Bathroom Turn Indicator with Emergency Release

Application: For use with 3800U-55B bathroom mortise lock  
 Rose Diameter: 52 mm  
 Rose Thickness: 4 mm  
 Knob Projection: 27 mm  
 Door Thickness: 51 mm maximum  
 Material: Stainless steel  
 Finish: US32D  
 Fasteners: Four (4) 3.5 mm x 25 mm

## TRIM - LOCKS



### 2-669-0732

#### Half Spindle

Length:

Notes:

58 x 8 x 8 mm

- Used with 3800U-55M and 3800U-55T mortise night latches
- Hook at spindle head ensures secure fit when used with half lever sets



### 2-669-0733

#### Split Spindle

Length:

Notes:

52.5 x 8 x 8 mm each spindle

105 mm total length

- Used with 3800U-55P mortise anti-panic split follower locks
- Enables independent operation on inside and outside of doors



### 2-669-1364

#### Blank Cylinder Rose

Material:

Finish:

Dimensions:

Notes:

Stainless steel

US32D

54 mm diameter

10 mm width

For Euroline mortise locks using half cylinders



### 3910

#### Padlock

Material:

Body Width:

Body Height:

Body Thickness:

Cylinder:

Shackle Height:

Shackle Diameter:

Keyway:

Keying:

Includes:

Notes:

- Body - steel
- Shackle - hardened steel

44 mm

56.2 mm

22.8 mm

Removable

34.5 mm

8 mm

Schlage C

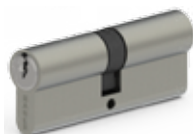
- Keyed Different (KD) - Standard
- Master Key (MK) - Optional

One (1) padlock with removable cylinder and two (2) brass keys

Spring loaded shackle



## CYLINDERS



### 3000-D Series Double Cylinder

Warranty:

Application:

Function:

Length:

Material:

Finish:

Cylinder:

Keyways:

Keying:

Keys:

Includes:

Three-year

For use with Euroline mortise locks

Key on both sides

- 60 mm - 3000-60D
- 70 mm - 3000-70D
- 75 mm - 3000-75D; H1
- 80 mm - 3000-80D

Brass

US15

- 5-pin (3000-60D)
- 6-pin (3000-70D and 3000-80D)
- 7-pin (3000-75D; H1)

Hager H1 or Schlage C

- Keyed Different (KD) - standard (Schlage C keyway only)
- Master Key (MK) - optional (6- or 7- pin cylinders only)

Three (3) keys

One (1) cylinder, three (3) nickel-plated steel keys, and one (1) fixing screw



### 3000-H Series Half Cylinder

Warranty:

Application:

Function:

Length:

Material:

Finish:

Cylinder:

Keyways:

Keying:

Keys:

Includes:

Three-year

For use with Euroline mortise locks

Key one side, other side blank

- 40 mm - 3000-40H
- 45 mm - 3000-45H
- 50 mm - 3000-50H; H1

Brass

US15

- 5-pin (3000-40H)
- 6-pin (3000-45H)
- 7-pin (3000-50H; H1)

Hager H1 or Schlage C

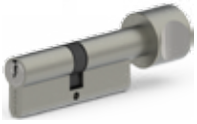
- Keyed Different (KD) - standard (Schlage C keyway only)
- Master Key (MK) - optional (6- or 7- pin cylinders only)

Three (3) keys

One (1) cylinder, three (3) nickel-plated steel keys, and one (1) fixing screw

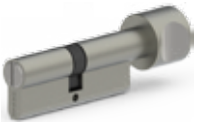


## CYLINDERS



### **3000-C Series Thumbturn Cylinder**

Warranty:	Three-year
Application:	For use with Euroline mortise locks
Function:	Key one side, thumbturn other side
Length:	<ul style="list-style-type: none"><li>• 60 mm - 3000-60C</li><li>• 70 mm - 3000-70C</li><li>• 75 mm - 3000-75C; H1</li><li>• 80 mm - 3000-80C</li></ul>
Material:	Brass
Finish:	US15
Cylinder:	<ul style="list-style-type: none"><li>• 5-pin (3000-60C)</li><li>• 6-pin (3000-70C and 3000-80C)</li><li>• 7-pin (3000-75C; H1)</li></ul>
Keyways:	Hager H1 or Schlage C
Keying:	<ul style="list-style-type: none"><li>• Keyed Different (KD) - standard (Schlage C keyway only)</li><li>• Master Key (MK) - optional (6- or 7- pin cylinders only)</li></ul>
Keys:	Three (3) keys
Includes:	One (1) cylinder, three (3) nickel-plated steel keys, and one (1) fixing screw



### **3000-R Series Thumbturn Cylinder with Emergency Release**

Warranty:	Three-year
Application:	For use with Euroline mortise locks
Function:	Thumbturn one side, emergency release other side
Length:	<ul style="list-style-type: none"><li>• 60 mm - 3000-60R</li><li>• 70 mm - 3000-70R</li><li>• 80 mm - 3000-80R</li></ul>
Material:	Brass
Finish:	US15
Includes:	One (1) cylinder and one (1) fixing screw

# Door Controls



Door control devices allow for precise regulation of both the opening and closing of commercial doors. Hager Companies' Euroline portfolio includes a wide range of door control products including universal surface mount closers, concealed in door models, and floor springs.



## DOOR CONTROLS

### SURFACE DOOR CLOSERS



#### 5800R

##### Surface Door Closer

Warranty:

Certifications:

Overall Dimensions:

Door Width:

Door Weight:

Maximum Opening:

Valves:

Adjustable Size:

Material:

Finish:

Options:

Five-year

- CertiFire CF 5390

- Tested to EN1154 (4:8:2/5:1:1:3)

- Certified for fire doors

237 (l) x 55 (h) x 39 (projection) mm

850 mm to 1250 mm

45 kg to 110 kg

180 degrees

- Adjustable latching and sweep speed valve

- Adjustable backcheck valve

- Adjustable delayed action valve

2 to 5

Aluminum

Aluminum

Hold open arm (2-659-0149)

Sliding track arm (2-659-0087)

Metal closer cover (2-659-0088)

Parallel arm bracket (2-659-0097)



#### 5800V

##### Surface Door Closer

Warranty:

Certifications:

Overall Dimensions:

Door Width:

Door Weight:

Maximum Opening:

Valves:

Size:

Material:

Finish:

Options:

Five-year

- Tested to EN1154 (4:8:3:1:1:3)

- Certified for fire doors

218 (l) x 59 (h) x 42 (projection) mm

850 mm - 1100 mm

45 kg - 80 kg

180 degrees

- Adjustable latching and sweep speed valve

- Adjustable backcheck valve

2 to 4 adjustable via mounting position

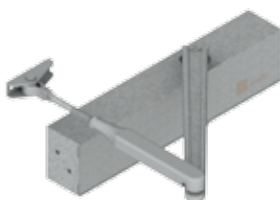
Aluminum

Aluminum

Hold open arm (2-659-0149)

Sliding track arm (2-659-0087)

Parallel arm bracket (2-659-0097)



#### 5800X

##### Surface Door Closer

Warranty:

Certifications:

Overall Dimensions:

Door Width:

Door Weight:

Maximum Opening:

Valves:

Adjustable Size:

Material:

Finish:

Options:

Five-year

- CertiFire CF 5390

- Tested to EN1154 (4:8:3/6:1:1:3)

- Certified for fire doors

275 (l) x 62 (h) x 45 (projection) mm

950 mm - 1450 mm

60 kg - 120 kg

180 degrees

- Adjustable latching and sweep speed valve

- Adjustable backcheck valve

3 to 6

Aluminum

Aluminum

Hold open arm (2-659-0149)

Sliding track arm (2-659-0087)

Parallel arm bracket (2-659-0097)





## DOOR CONTROLS

### SURFACE DOOR CLOSERS - ACCESSORIES



#### 2-659-0087

##### Slide Arm and Track Assembly

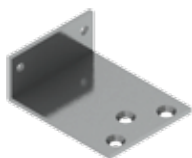
Warranty: Five-year  
 Material: Aluminum track, steel arm  
 Finish: Aluminum  
 Overall Dimensions: 19 (h) x 547 (w) 29 (d) mm  
 Notes: For use with 5800R, 5800X and 5800V



#### 2-659-0088

##### Surface Door Closer Cover

Material: Stainless steel  
 Finish: US32D  
 Overall Dimensions: 73 (h) x 267 (w) x 38 (d) mm  
 Notes: **For use with 5800R only**



#### 2-659-0097

##### Parallel Arm Bracket

Material: Steel  
 Finish: Aluminum  
 Notes:
 

- Can be used to convert regular or top jamb arm to parallel arm
- For use with 5800R, 5800X and 5800V



#### 2-659-0149

##### Hold Open Arm for Surface Door Closer

Material: Steel  
 Finish: Aluminum  
 Notes:
 

- For use with 5800R, 5800X and 5800V
- Adjustable hold open angle



## DOOR CONTROLS

### CONCEALED DOOR CLOSERS



#### **5800C**

##### **Concealed Door Closer**

Warranty:	Five-year
Certifications:	Conforms to EN1154
Body Dimensions:	230 (l) x 32 (w) x 70 (h) mm
Track Dimensions:	460 (l) x 29 (w) x 19 (h) mm
Size:	3
Maximum Opening:	120 degrees
Door Width:	950 mm
Door Weight:	60 kg
Mechanism:	Rack and pinion
Material:	Aluminum
Finish:	Aluminum
Notes:	Track comes standard with hold open feature (can be removed to become non-hold open)



#### **5800D**

##### **Concealed Door Closer**

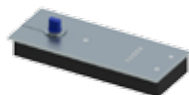
Warranty:	Five-year
Certifications:	<ul style="list-style-type: none"><li>• CertiFire CF 5392</li><li>• Tested to EN1154 (4:8:2/4:1:1:3)</li><li>• Certified for fire doors (unless using hold open feature)</li></ul>
Body Dimensions:	210 (l) X 32 (w) X 53.5 (h) mm
Track Dimensions:	460 (l) x 29 (w) x 19 (h) mm
Door Width:	850 mm - 1100 mm
Door Weight:	40 kg - 80 kg
Adjustable Size:	2 to 4
Maximum Opening:	120 degrees
Mechanism:	Cam action
Material:	Aluminum
Finish:	Aluminum
Notes:	<ul style="list-style-type: none"><li>• Track comes standard with hold open feature (can be removed to become non-hold open)</li><li>• Double acting</li></ul>





## DOOR CONTROLS

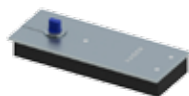
### FLOOR SPRINGS



#### **5800F**

##### **Floor Spring**

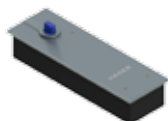
Warranty:	Five-year
Certifications:	Tested to EN1154 (4:8:3:1:1:3)
Overall Dimensions:	306 (l) x 108 (w) x 40 (h) mm
Size:	3
Maximum Opening:	130 degrees
Door Width:	950 mm maximum
Door Weight:	105 kg
Material:	Cast iron
Finish:	US32D
Cover:	US32D stainless steel



#### **5815F**

##### **Floor Spring with 90 Degree Hold Open**

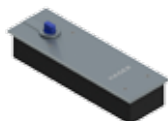
Warranty:	Five-year
Certifications:	Conforms to EN1154
Overall Dimensions:	306 (l) x 108 (w) x 40 (h) mm
Size:	3
Maximum Opening:	130 degrees
Door Width:	950 mm maximum
Door Weight:	105 kg
Material:	Cast iron
Finish:	US32D
Cover:	US32D stainless steel
Notes:	Built in hold open



#### **5800H**

##### **Floor Spring**

Warranty:	Five-year
Certifications:	Conforms to EN1154 (4:8:3/6:1:1:3)
Overall Dimensions:	323 (l) x 94 (w) x 62 (h) mm
Adjustable Size:	3 to 6
Maximum Opening:	150 degrees
Door Width:	1450 mm maximum
Door Weight:	300 kg
Material:	Cast iron
Finish:	US32D
Cover:	US32D stainless steel



#### **5815H**

##### **Heavy Duty Floor Spring with 90 Degree Hold Open**

Warranty:	Five-year
Certifications:	Conforms to EN1154
Overall Dimensions:	323 (l) x 94 (w) x 62 (h) mm
Adjustable Size:	3 to 6
Maximum Opening:	150 degrees
Door Width:	1450 mm maximum
Door Weight:	300 kg
Material:	Cast iron
Finish:	US32D
Cover:	US32D stainless steel



# Exit Devices



Exit devices are the most important life safety product in a building's security system. They are the item on a door that we all need to rely on to exit in either a panic or an emergency. Exit devices should not require any person to have prior knowledge of their function – you just push and go. Hager offers exit devices in rim and surface vertical rod versions in both stainless steel and silver painted finishes to suit the vast majority of door sizes and applications.



## EXIT DEVICES



### 4200 Series Rim Rim Exit Device

Warranty:

Certifications:

Application:

Features:

Trim:

Functions:

Door Width:

Door Thickness:

Projections:

Fasteners:

Latchbolt:

Strikes:

Finishes:

Three-year

- Tested to EN1125 (3:7:6:B:1:4:2:2:B:A)

- Certified for fire doors

- For single doors

- The first opening leaf of double doors when using a double door strike

- Stainless steel construction

- Dead locking latch bolt standard

- Non-handed

- 42CE - William lever with cylinder escutcheon

- 42KE - Withnell lever with key in lever

Cylinder escutcheon - key locks or unlocks lever

- 762 mm to 1220 mm for single doors

- 1524 mm to 2440 mm for double doors

Up to 50 mm

63 mm

- Wood and machine screws

- Thru-bolts

- Stainless steel 15 mm throw with automatic dead-latching

- Stainless steel door strike supplied standard

- Stainless steel double door strike optional (2-649-5011)

- US32D, ALM

- Trim only available in US32D



### 4200 Series Surface Vertical Rod Surface Vertical Rod Mount Panic Exit Device

Warranty:

Certifications:

Application:

Features:

Trim:

Functions:

Door Width:

Door Height:

Door Thickness:

Projections:

Fasteners:

Latchbolt:

Strikes:

Finishes:

Three-year

- Tested to EN1125 (3:7:6:B:1:4:2:2:B:C)

- Certified for fire doors

For single or double doors

- Stainless steel construction

- Non-handed

- 42CE - William lever with cylinder escutcheon

- 42KE - Withnell lever with key in lever

Cylinder escutcheon - key locks or unlocks lever

- 762 mm to 1220 mm for single doors

- 1524 mm to 2440 mm for double doors

1524 mm to 2134

Up to 50 mm

63 mm

- Wood and machine screws

- Thru-bolts (latches only)

- Top - Stainless steel 15 mm throw with automatic dead-latching

- Bottom - Stainless steel 15 mm throw, held retracted during door swing

- Stainless steel top and bottom strike supplied standard

- Stainless steel double door strike supplied standard

- US32D, ALM

- Trim only available in US32D





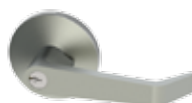
## EXIT DEVICE TRIM



### **42CE**

#### **4200 Series Cylinder Escutcheon Trim**

Warranty:	Three-year
Function:	Key locks or unlocks lever
Levers:	William lever
Projection:	84.1 mm
Escutcheon:	47 mm x 211 mm
Cylinders:	<ul style="list-style-type: none"><li>• 3000-40 H half cylinder (sold separately)</li><li>• 45 mm &amp; 50 mm will work, but will not be flush (sold separately)</li></ul>
Door Thickness:	Up to 50 mm
Backset:	56 mm for Hager 4200 Exit Devices
Finish:	US32D
Notes:	Non-handed



### **42KE**

#### **4200 Series Key-in-Lever Trim**

Warranty:	Three-year
Function:	Entrance by lever exit device trim (key locks or unlocks lever)
Levers:	Withnell lever
Projection:	55 mm
Standard Door Prep:	54 mm diameter (cross bore)
Rose Diameter:	76 mm
Keys:	Three (3) brass keys supplied per lock
Cylinders:	Brass 5-pin (Schlage C keyway standard)
Door Thickness:	Up to 50 mm
Backset:	56 mm for Hager Exit Devices
Finish:	US32D
Notes:	Non-handed



# Patch Fittings



Patch fittings allow for the hanging and operation of glass doors in conjunction with floor springs and locking systems. Hager Companies provides a comprehensive range of patch fittings and pivot assemblies to work seamlessly with their floor springs and euro cylinders.



## PATCH FITTINGS



### 651

#### Bottom Patch Fitting

Glass Thickness:

Material:

Maximum Door Weight:

Maximum Door Width:

Handing:

Finish:

Includes:

Installation:

Notes:

10-12 mm

- Cast aluminum base
- Stainless steel cover

80 kg

1100 mm

Suitable for left and right hand door (double acting)

US32

One (1) patch fitting and one (1) allen key

Clamp fixing, concealed with hexagonal socket screws

- Pivot post hole for use with all Hager 5800 floor closers
- Pivot laterally adjustable +/- 3 mm



### 652

#### Top Patch Fitting

Glass Thickness:

Material:

Maximum Door Weight:

Maximum Door Width:

Handing:

Finish:

Includes:

Installation:

Notes:

10-12 mm

- Cast aluminum base
- Stainless steel cover

80 kg

1100 mm

Suitable for left and right hand door (double acting)

US32

One (1) patch fitting and one (1) allen key

Clamp fixing, concealed with hexagonal socket screws

- Pivot post bearing for use with upper and corner over panel patch fitting
- Pivot laterally adjustable +/- 3 mm



### 653

#### Overpanel Patch Fitting

Glass Thickness:

Material:

Maximum Door Weight:

Maximum Door Width:

Handing:

Finish:

Includes:

Installation:

Notes:

10-12 mm

- Cast aluminum base
- Stainless steel cover

80 kg

1100 mm

Suitable for left and right hand door (double acting)

US32

One (1) patch fitting and one (1) allen key

Clamp fixing, concealed with hexagonal socket screws

- Pivot post for use with top patch fitting
- Pivot laterally adjustable +/- 3 mm



## PATCH FITTINGS



### 654

#### Corner Overpanel Patch Fitting

- Glass Thickness: 10-12 mm
- Material:
- Cast aluminum base
  - Stainless steel cover
- Maximum Door Weight: 80 kg
- Maximum Door Width: 1100 mm
- Handing: Suitable for left and right hand door (double acting)
- Finish: US32
- Includes: One (1) patch fitting and one (1) allen key
- Installation: Clamp fixing, concealed with hexagonal socket screws
- Notes:
- Pivot post for use with top patch fitting
  - Pivot laterally adjustable +/- 3 mm



### 655

#### Bottom Lock Patch Fitting

- Glass Thickness: 10-12 mm
- Material:
- Cast aluminum base
  - Stainless steel cover
- Handing: Suitable for left and right hand door (double acting)
- Finish: US32
- Includes: Patch fitting, allen key, floor strikes hardware, Schlage C cylinder and three (3) keys
- Installation: Clamp fixing, concealed with hexagonal socket screws



### 2-659-0150

#### Heavy Duty Top Pivot

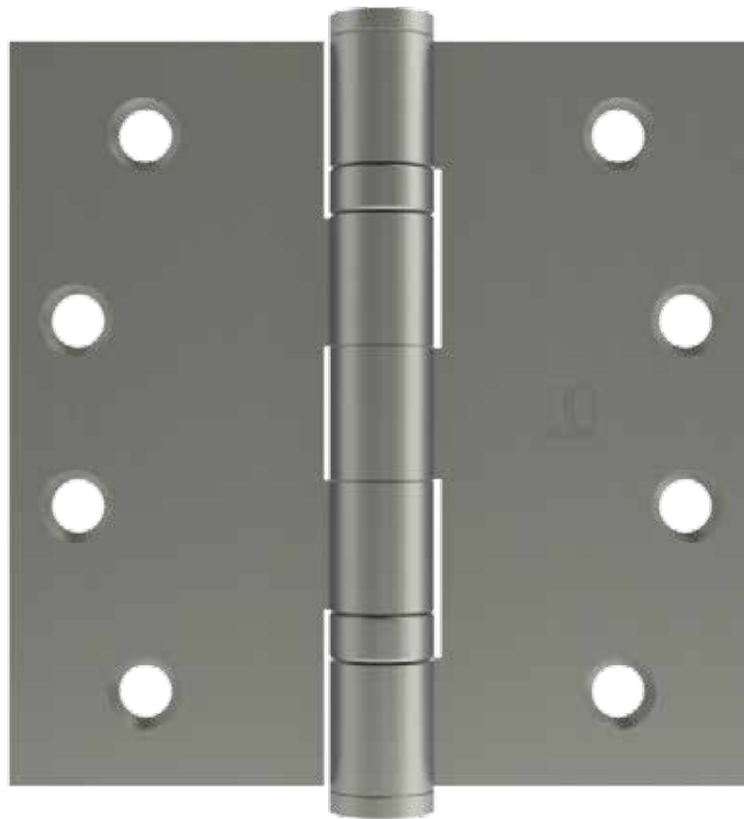
- Material: Cast aluminum base
- Finish: US15 top pivot cover plate
- Includes:
- One (1) frame pivot
  - One (1) stainless steel US15 frame pivot cover with mount screws
  - Mounting hardware screw bag
- Installation: Vertically adjustable pivot pin for easy door installation
- Notes: For use with 652 and non-glass frames



# Commercial Hinges



Hager Companies has been the market leader in commercial hinges for over 166 years. That unrivaled experience has been channeled into a range of EN certified hinges to meet the exacting standards of international markets. The Hager Euroline hinge offering includes regular standard duty, rising, and falling models in multiple sizes.



## TWO KNUCKLE HINGES



### 7191

#### Rising Butt Hinge - Standard Weight - Full Mortise

Stainless steel with stainless steel pin

- Three-year warranty
- Raises door upon opening
- Used to keep door in closed position
- Handed
- Available in US32D

Hinge Size	Gauge of Metal	Fasteners
102 mm x 76 mm	3 mm	5 mm x 32 mm FPHWS
102 mm x 102 mm	3 mm	5 mm x 32 mm FPHWS



### 7192

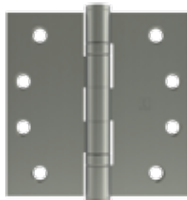
#### Falling Butt Hinge - Standard Weight - Full Mortise

Stainless steel with stainless steel pin

- Three-year warranty
- Lowers door upon opening
- Used to keep door in open position
- Handed
- Available in US32D

Hinge Size	Gauge of Metal	Fasteners
102 mm x 76 mm	3 mm	5 mm x 32 mm FPHWS
102 mm x 102 mm	3 mm	5 mm x 32 mm FPHWS

## FIVE KNUCKLE HINGES



### BB6191

#### Ball Bearing - Standard Weight - Full Mortise

Stainless steel with stainless steel pin

- Three-year warranty
- Certifications: EN1935 Grade 13 (Severe Duty for doors up to 120 kg), Corrosion resistance - Grade 4, and EN Certification No: 476114013
- CertiFire CF 5288
- For use on medium weight doors
- Available in US3, US5, US10B, US32D

Hinge Size	Gauge of Metal	Fasteners	
		Machine	Wood
89 mm x 89 mm	3 mm	M4.5 x 12 mm	4.5 mm x 25 mm FPHWS
102 mm x 76 mm	3 mm	M5 x 15 mm	5 mm x 32 mm FPHWS
102 mm x 89 mm	3 mm	M5 x 15 mm	5 mm x 32 mm FPHWS
102 mm x 102 mm	3 mm	M5 x 15 mm	5 mm x 32 mm FPHWS
127 mm x 89 mm	3 mm	M5 x 15 mm	5 mm x 32 mm FPHWS

# Trim & Auxiliary

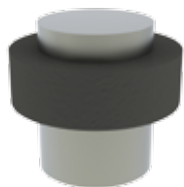


To complement our extensive European offering, Hager Companies delivers a wide array of trim & auxiliary products for international markets. This includes door stops, bolts, dust proof strikes, coat hooks, and signage.



## TRIM & AUXILIARY

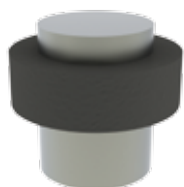
### DOOR STOPS



#### 248E

##### Pedestal Door Stop

Base Diameter:	22 mm
Height:	30.5 mm
Materials:	Stainless steel with rubber bumper
Finish:	US32D
Fasteners:	One (1) 5 mm x 30 mm FPHWS with anchor



#### 248U

##### Pedestal Door Stop - Tall

Base Diameter:	28 mm
Height:	37.5 mm
Materials:	Stainless steel with rubber bumper
Finish:	US32D
Fasteners:	One (1) 5 mm x 30 mm FPHWS with anchor

### SURFACE BOLTS



#### 277E

##### Surface Bolt

Bolt Length:	125 mm
Bolt Height:	18 mm
Bolt Depth:	6 mm
Bolt Throw:	35 mm
Base Width:	100 mm
Knob Diameter:	25 mm
Projection:	32 mm
Material:	Zinc
Finish:	US15
Fasteners:	Seven (7) 3.5 mm x 25 mm FPHMS



#### 277T

##### Indicator Thumbturn Bolt

Bolt Length:	87 mm
Bolt Height:	11.5 mm
Bolt Width:	6 mm
Bolt Throw:	19 mm
Projection:	29 mm
Material:	Stainless steel
Finish:	US32D
Fasteners:	Eight (8) 3.5 mm x 25 mm FPHSMS
Notes:	57 mm maximum door thickness



## TRIM & AUXILIARY

### FLUSH BOLTS & STRIKES



#### 280E

##### Dust Proof Strike

Barrel Diameter: 19 mm  
 Barrel/Plunger Diameter: 13.5 mm  
 Depth: 36.5 mm  
 Material: Stainless steel  
 Finish: US32D



#### 1420

##### Manual Flush Bolt

Length: 200 mm  
 Width: 20.3 mm  
 Depth: 16.5 mm  
 Bolt Diameter: 9.9 mm  
 Bolt Throw: 15.8 mm  
 Material: Stainless steel  
 Finish: US32D  
 Strike Fasteners: Two (2) 3.5 mm x 19 mm FPHWS  
 Flush Bolt Fasteners: Two (2) 3.5 mm x 25 mm FPHWS

### MISCELLANEOUS



#### 299D

##### Concealed Door Chain

Materials: Strike - Stainless steel  
 Latch body - Plastic  
 Latch faceplate - Stainless steel  
 Door Thickness: 35 mm - 55 mm  
 Finish: US32D  
 Fasteners: Five (5) 3.5 mm x 25 mm FPHWS



#### 1757

##### Door Viewer

Viewing Range: 145 Degrees  
 Material: Brass  
 Finish: US26D  
 Notes:
 

- PVC lens, with back cover
- For doors 35 mm - 55 mm thick, adjustable
- Requires 16 mm hole



## TRIM & AUXILIARY

### COAT HOOKS



#### 6630

##### Double Coat Hook - Angled

Height: 72 mm  
 Upper Projection: 75.5 mm  
 Lower Projection: 30 mm  
 Material: Stainless steel  
 Finish: US32D  
 Fasteners: Two (2) 4 mm x 25 mm FPHWS



#### 6640

##### Double Coat Hook - Straight

Height: 78 mm  
 Upper Projection: 72 mm  
 Lower Projection: 25 mm  
 Material: Stainless steel  
 Finish: US32D  
 Fasteners: Two (2) 4 mm x 25 mm FPHWS

### SIGNAGE



#### 371F

##### Female

Size: 75 mm diameter  
 Material: 1.6 mm thick 304 stainless steel  
 Finish: US32D  
 Fasteners: Two (2) 4 mm x 25 mm FPHWS



#### 371H

##### Handicap

Size: 75 mm diameter  
 Material: 1.6 mm thick 304 stainless steel  
 Finish: US32D  
 Fasteners: Two (2) 4 mm x 25 mm FPHWS



## TRIM & AUXILIARY



### **371M**

#### **Male**

Size:

Material:

Finish:

Fasteners:

75 mm diameter

1.6 mm thick 304 stainless steel

US32D

Two (2) 4 mm x 25 mm FPHWS



### **371S**

#### **No Smoking**

Size:

Material:

Finish:

Fasteners:

75 mm diameter

1.6 mm thick 304 stainless steel

US32D

Two (2) 4 mm x 25 mm FPHWS



### **371U**

#### **Unisex**

Size:

Material:

Finish:

Fasteners:

75 mm

1.6 mm thick 304 stainless steel

US32D

Two (2) 4 mm x 25 mm FPHWS