

# Trim & Auxiliary

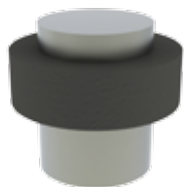


To complement our extensive European offering, Hager Companies delivers a wide array of trim & auxiliary products for international markets. This includes door stops, bolts, dust proof strikes, coat hooks, and signage.



## TRIM & AUXILIARY

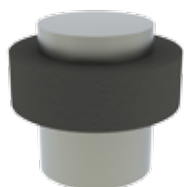
### DOOR STOPS



#### 248E

##### Pedestal Door Stop

Base Diameter:	22 mm
Height:	30.5 mm
Materials:	Stainless steel with rubber bumper
Finish:	US32D
Fasteners:	One (1) 5 mm x 30 mm FPHWS with anchor



#### 248U

##### Pedestal Door Stop - Tall

Base Diameter:	28 mm
Height:	37.5 mm
Materials:	Stainless steel with rubber bumper
Finish:	US32D
Fasteners:	One (1) 5 mm x 30 mm FPHWS with anchor

### SURFACE BOLTS



#### 277E

##### Surface Bolt

Bolt Length:	125 mm
Bolt Height:	18 mm
Bolt Depth:	6 mm
Bolt Throw:	35 mm
Base Width:	100 mm
Knob Diameter:	25 mm
Projection:	32 mm
Material:	Zinc
Finish:	US15
Fasteners:	Seven (7) 3.5 mm x 25 mm FPHMS



#### 277T

##### Indicator Thumbturn Bolt

Bolt Length:	87 mm
Bolt Height:	11.5 mm
Bolt Width:	6 mm
Bolt Throw:	19 mm
Projection:	29 mm
Material:	Stainless steel
Finish:	US32D
Fasteners:	Eight (8) 3.5 mm x 25 mm FPHSMS
Notes:	57 mm maximum door thickness



## TRIM & AUXILIARY

### FLUSH BOLTS & STRIKES



#### 280E

##### Dust Proof Strike

Barrel Diameter:	19 mm
Barrel/Plunger Diameter:	13.5 mm
Depth:	36.5 mm
Material:	Stainless steel
Finish:	US32D



#### 1420

##### Manual Flush Bolt

Length:	200 mm
Width:	20.3 mm
Depth:	16.5 mm
Bolt Diameter:	9.9 mm
Bolt Throw:	15.8 mm
Material:	Stainless steel
Finish:	US32D
Strike Fasteners:	Two (2) 3.5 mm x 19 mm FPHWS
Flush Bolt Fasteners:	Two (2) 3.5 mm x 25 mm FPHWS

### MISCELLANEOUS



#### 299D

##### Concealed Door Chain

Materials:	Strike - Stainless steel Latch body - Plastic Latch faceplate - Stainless steel
Door Thickness:	35 mm - 55 mm
Finish:	US32D
Fasteners:	Five (5) 3.5 mm x 25 mm FPHWS



#### 1757

##### Door Viewer

Viewing Range:	145 Degrees
Material:	Brass
Finish:	US26D
Notes:	<ul style="list-style-type: none"> <li>• PVC lens, with back cover</li> <li>• For doors 35 mm - 55 mm thick, adjustable</li> <li>• Requires 16 mm hole</li> </ul>



## TRIM & AUXILIARY

### COAT HOOKS



#### 6630

##### Double Coat Hook - Angled

Height: 72 mm  
 Upper Projection: 75.5 mm  
 Lower Projection: 30 mm  
 Material: Stainless steel  
 Finish: US32D  
 Fasteners: Two (2) 4 mm x 25 mm FPHWS



#### 6640

##### Double Coat Hook - Straight

Height: 78 mm  
 Upper Projection: 72 mm  
 Lower Projection: 25 mm  
 Material: Stainless steel  
 Finish: US32D  
 Fasteners: Two (2) 4 mm x 25 mm FPHWS

### SIGNAGE



#### 371F

##### Female

Size: 75 mm diameter  
 Material: 1.6 mm thick 304 stainless steel  
 Finish: US32D  
 Fasteners: Two (2) 4 mm x 25 mm FPHWS



#### 371H

##### Handicap

Size: 75 mm diameter  
 Material: 1.6 mm thick 304 stainless steel  
 Finish: US32D  
 Fasteners: Two (2) 4 mm x 25 mm FPHWS



## TRIM & AUXILIARY



### **371M**

#### **Male**

Size:

Material:

Finish:

Fasteners:

75 mm diameter

1.6 mm thick 304 stainless steel

US32D

Two (2) 4 mm x 25 mm FPHWS



### **371S**

#### **No Smoking**

Size:

Material:

Finish:

Fasteners:

75 mm diameter

1.6 mm thick 304 stainless steel

US32D

Two (2) 4 mm x 25 mm FPHWS



### **371U**

#### **Unisex**

Size:

Material:

Finish:

Fasteners:

75 mm

1.6 mm thick 304 stainless steel

US32D

Two (2) 4 mm x 25 mm FPHWS