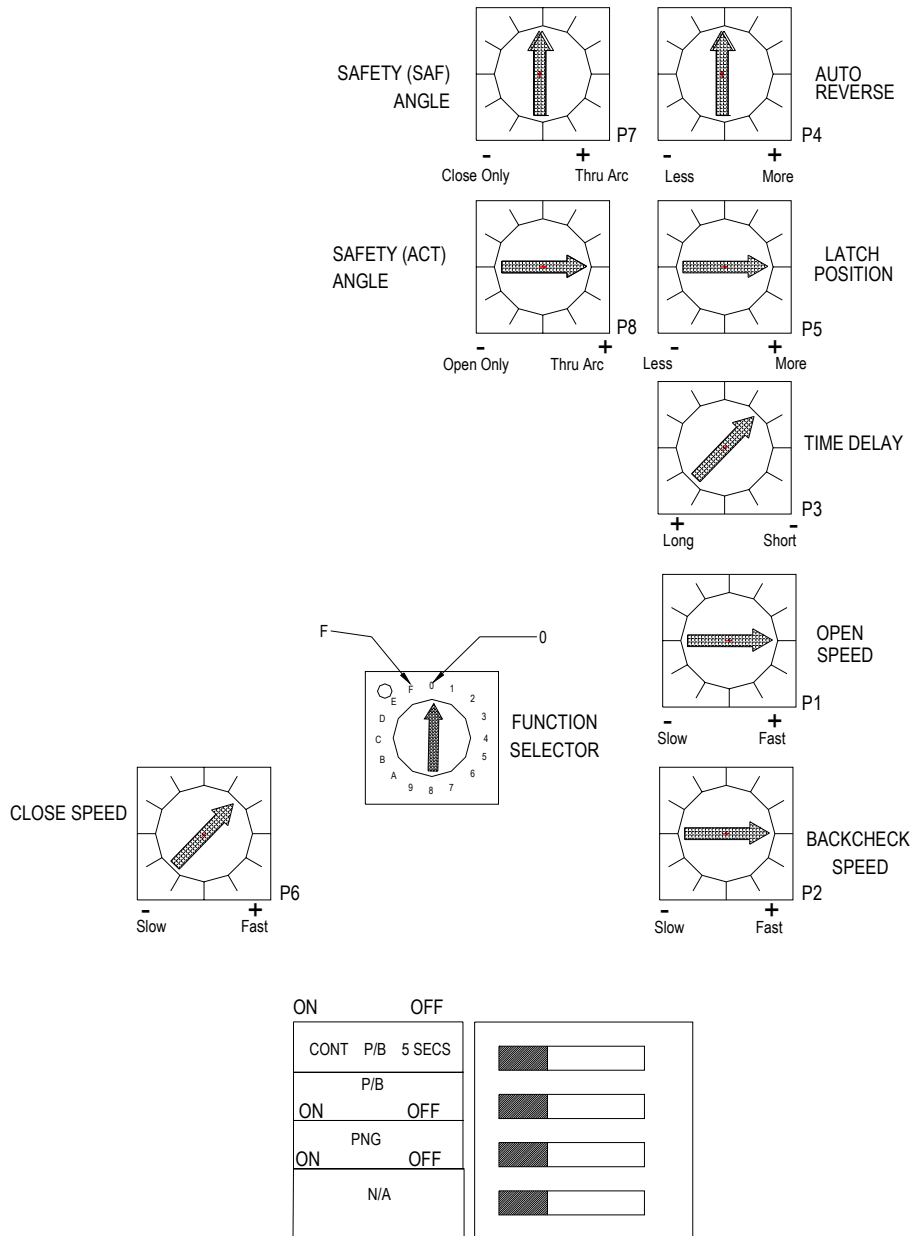


10.4 CONTROL BOX SETUP



10.5 9100 Series WIRING

PRIMARY FUSE 1 AMP
SECONDARY DRIVE FUSE 2.5 AMP

1	0V
2	Safety Saf
3	
4	
5	Safet Act (0V)
6	Safety Act
7	0V
8	Zone C
9	0V
10	Fire Alarm
11	0V
12	Zone A Keyswitch OFF
13	0V
14	Zone B Door Open

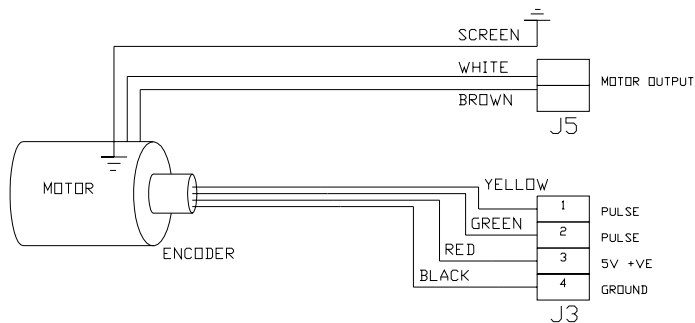
J4 Top

15	0V
16	24V DC +ve
17	17V ac
18	17V ac
19	Common Strike Relay
20	N/D Strike Relay
21	N/C Strike Relay
22	0V
23	2 Way Input
24	Keyswitch 2 Way Input RED
25	0V
26	Keyswitch H.O Input GREEN
27	0V
28	1 Way Input

J4 Bottom

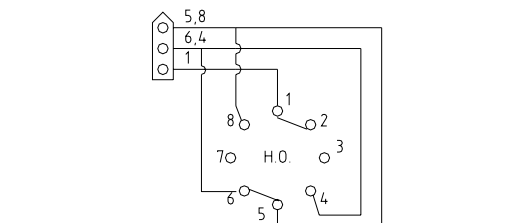
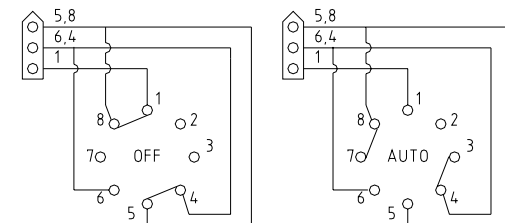
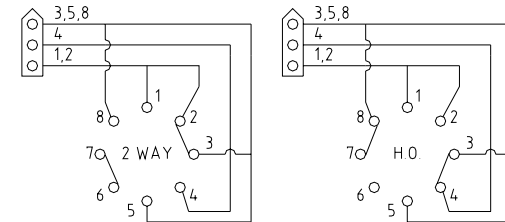
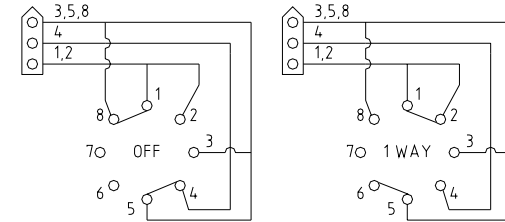
L
E
N

J7



4 POSITION
3 POSITION

1,2 1
3,5,8 5,8
4 6,4



240V

10.6 9100 Series Terminal Block

PRIMARY FUSE 1 AMP
SECONDARY DRIVE FUSE 2.5 AMP

1	0V
2	Safety Saf
3	
4	
5	Safet Act (0V)
6	Safety Act
7	0V
8	Zone C
9	0V
10	Fire Alarm
11	0V
12	Zone A Keyswitch OFF
13	0V
14	Zone B Door Open

J4 Top

15	0V
16	24V DC +ve
17	17V ac
18	17V ac
19	Common Strike Relay
20	N/O Strike Relay
21	N/C Strike Relay
22	0V
23	2 Way Input
24	Keyswitch 2 Way Input RED
25	0V
26	Keyswitch H.O Input GREEN
27	0V
28	1 Way Input

J4 Bottom

4 POSITION

1,2

3,5,8

4

3 POSITION

1

5,8

6,4