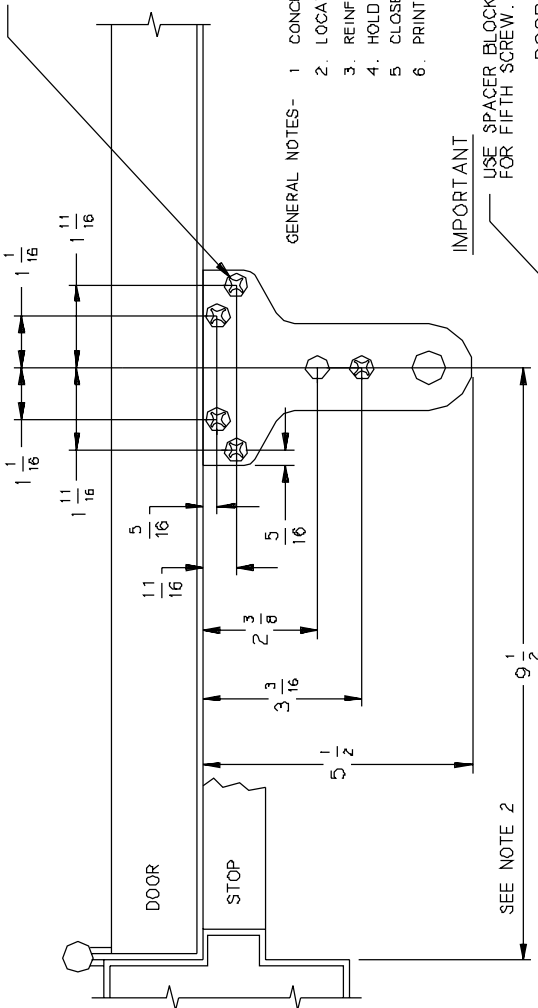


4840 } POWER OPENING 90°
 CUSH MAX. OPENING 100°
 SPRING CUSH MAX. OPENING 105°
 EDA MAX. OPENING 105°

AUXILIARY STOP RECOMMENDED
 LEFT HAND DOOR AND CLOSER
 SHOWN, RIGHT HAND OPPOSITE 6/96

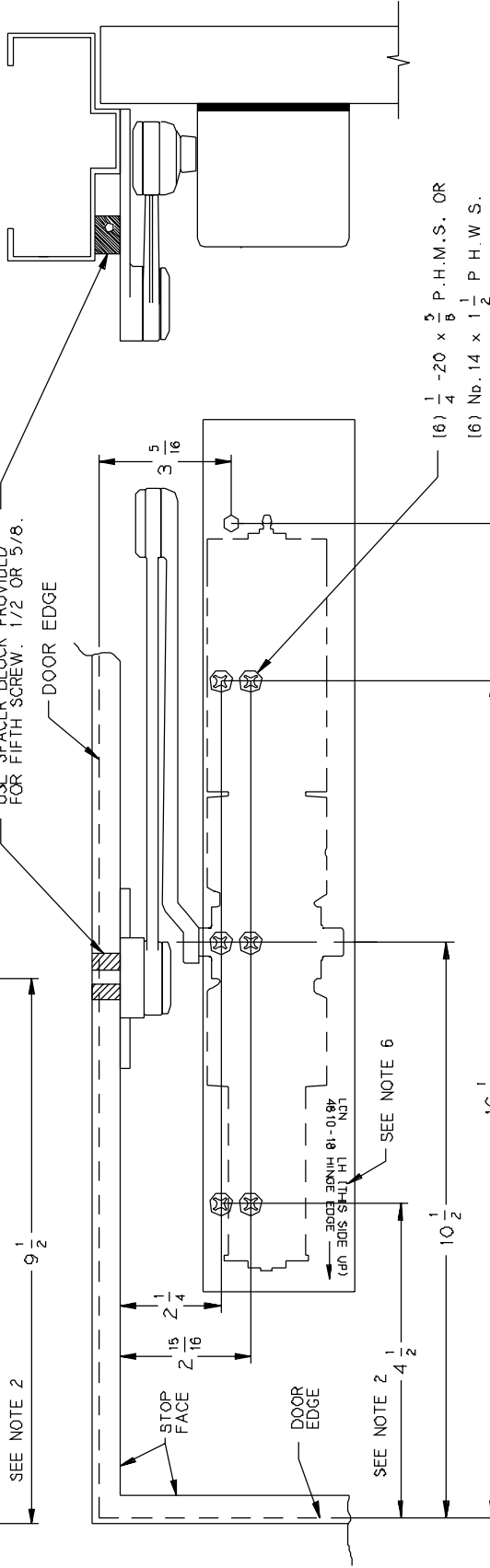
- (4) $\frac{1}{4}$ -20 x $\frac{5}{8}$ P.H.M.S.
- (1) $\frac{1}{4}$ -20 x $1\frac{1}{2}$ P.H.M.S.
OR
- (5) No. 14 x 2" P.H.W.S.



- GENERAL NOTES-
- 1 CONCEALED OR SURFACE AIR TRANSFER BY OTHERS REQUIRED.
 2. LOCATE CLOSER & SHOE FROM $\frac{1}{2}$ OF PIVOT OR SWING CLEAR HINGE PIN IF USED.
 3. REINFORCING PER ANSI/SDI-100 RECOMMENDED FOR HOLLOW METAL DOORS AND FRAMES.
 4. HOLD OPEN SPRING CUSH ARM NOT AVAILABLE.
 5. CLOSER SIZE 20" x 3 1/2" x 3 5/16"
 6. PRINT ON PLATE WILL BE UPSIDE DOWN IN THIS INSTALLATION.

IMPORTANT

USE SPACER BLOCK PROVIDED FOR FIFTH SCREW. 1/2 OR 5/8.



LEFT HAND SHOWN, RIGHT HAND OPPOSITE

No.	REVISION	BY	DATE	APP BY
1	TEMPLATE UPDATE	J.E.J.	6/96	J.E.J. 6/96
2	TEMPLATE UPDATE	AMM	2/98	DD NOT SCALE

LCN®
 PUSH SIDE MOUNTED AUTO-EQUALIZER
 WITH 4040 EDA, CUSH, OR SPR. CUSH ARM

4840

INCH	$\frac{1}{4}$	$\frac{5}{16}$	$\frac{1}{2}$	$\frac{5}{8}$	$\frac{11}{16}$	$1\frac{1}{8}$	$1\frac{1}{2}$	$1\frac{11}{16}$	2	$2\frac{1}{2}$	$2\frac{3}{4}$
M.M.	6	8	13	16	17	27	38	43	51	57	60
INCH	$2\frac{15}{16}$	$3\frac{3}{16}$	$3\frac{1}{2}$	$4\frac{1}{2}$	$5\frac{1}{2}$	$6\frac{1}{2}$	$10\frac{1}{2}$	$16\frac{1}{2}$	$20\frac{1}{2}$	$20\frac{1}{2}$	$20\frac{1}{2}$
M.M.	75	84	89	114	140	165	267	419	508	511	511