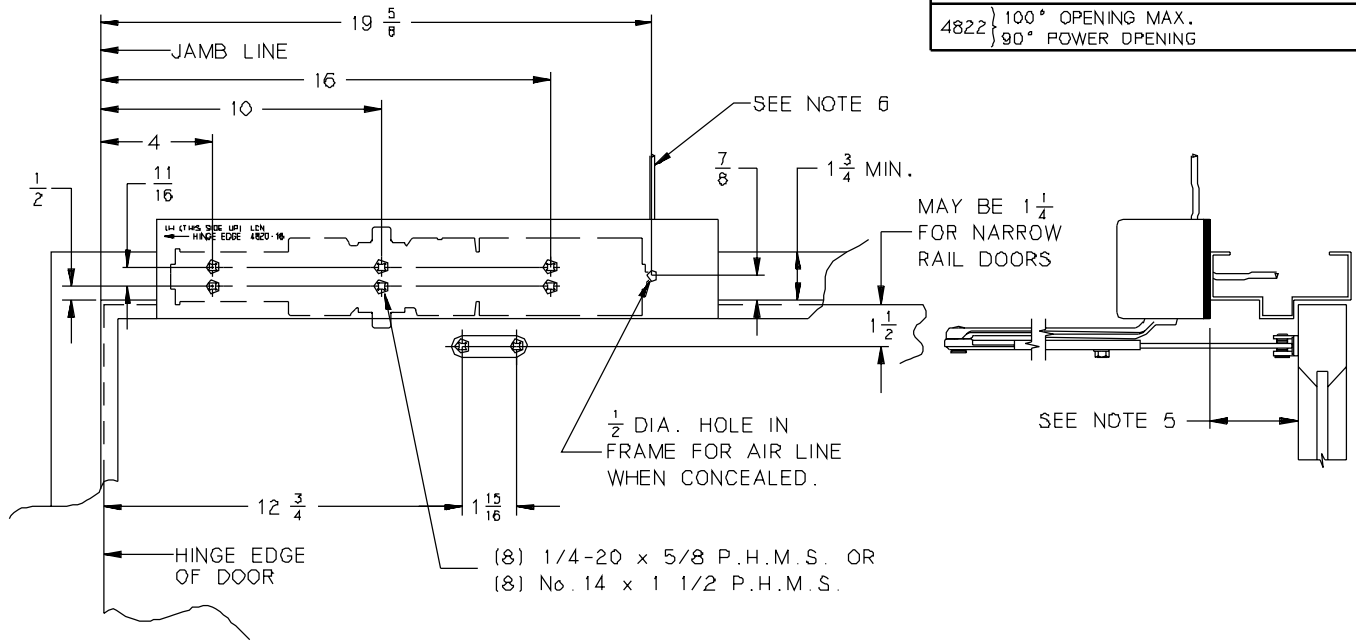


OVER DOOR ON 18 APPLIES TO:

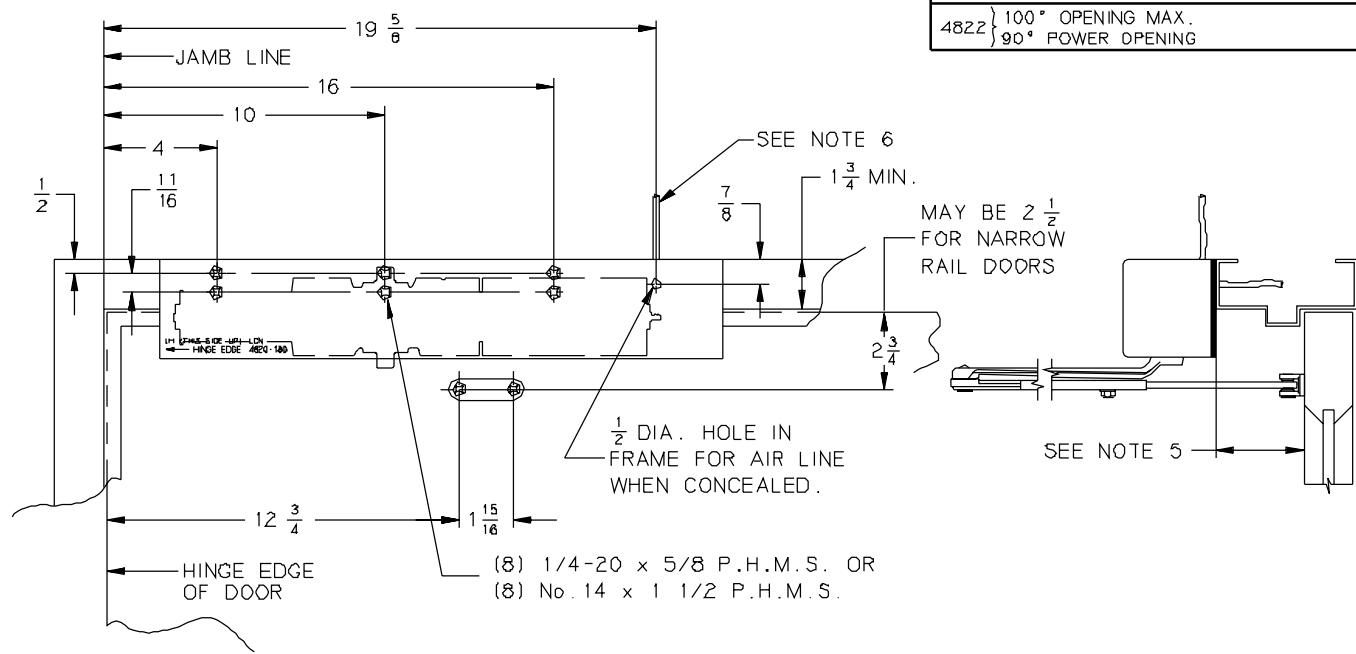
4822 } 100° OPENING MAX.
 } 90° POWER OPENING



LEFT HAND SHOWN, RIGHT HAND OPPOSITE

OVER DOOR ON 18G APPLIES TO:

4822 } 100° OPENING MAX.
 } 90° POWER OPENING



LEFT HAND SHOWN, RIGHT HAND OPPOSITE

GENERAL NOTES-

1. MOUNT PROPER SIDE OF MOUNTING PLATE PER HAND OF DOOR.
2. MOUNTING SCREWS No. 14 W.S. OR 1/4 - 20 M.S.
3. CLOSER SIZE 20 x 3 1/2 x 3 5/16
4. LOCATE OPERATOR & SHOE FROM C OF PIVOTS OR SWING CLEAR HINGE WHEN USED.
5. STANDARD ARM ACCOMMODATES REVEALS UP TO 4 1/2". REVEALS FROM 4 1/2" TO 8" USE OPTIONAL LONG ROD & SHOE.
6. 1/8" I.D. TUBING CONNECTED TO CONTROL BOX.
7. MAXIMUM BUTT SIZE 5" x 5"

INCH	1/2	11/16	7/8	1 1/4	1 1/2	1 3/4	1 15/16	2 1/2	
M.M.	13	18	22	32	38	44	49	64	
INCH	2 3/4	3 5/16	3 1/2	4	10	12 3/4	16	19 5/8	20
M.M.	70	84	89	102	254	324	406	498	508

No.	REVISION	BY	DATE
2	TEMPLATE UPDATE	JEJ	6/96

LCN[®]

APP BY JEJ 6/96
DO NOT SCALE

PUSH SIDE/TOP JAMB MOUNTED NON-HANDED AUTO-EQUALIZER[®] ON 18 OR 18G PLATE

4820